



Home / Archives / Vol. 8 No. 1 (2014): March 2014

## Vol. 8 No. 1 (2014): March 2014

DOI: <https://doi.org/10.5454/mi.8.1>

Published: 2014-04-28

### ISSN AND PUBLISHER

E-ISSN: 2087-8575

P-ISSN: 1978-3477

Sinta Score: "S1"

Accredited at "1st Rank" by Ministry of Research, Technology and Higher Education No. 030/E/KPT/2018 until October 2023

### Articles

#### Effect of Spontaneous Lactic Acid Fermentation on Physico-Chemical Properties of Sweet Potato Flour

NETI YULIANA, SITI NURDJANAH, RIBUT SUGIHARTO, DEARY AMETHY

1

PDF

#### Klebsiella pneumoniae from Indonesian Tempeh were Genetically Different from that of Pathogenic Isolates

EVELINE AYU, ANTONIUS SUWANTO, TATI BARUS

2

PDF

#### Characterization of Thermoplasma Species Cultured from Sampling on Tangkuban Perahu, Indonesia

AMARILA MALIK, IMAN SANTOSO, ANDI YEHUDA, SERUNI K.U. FREISLEBEN, SEPTELIA INAWATI WANANDI, HARALD HUBER, ZESSINDA LUTHFA, ROSARI SALEH, HANS-JOACHIM FREISLEBEN

3

PDF

#### Characterization of Antimicrobial Bacteriocin Produced by Bacillus cereus SS28 Isolates from Budu, a Traditionally Fermented Fish Product of West Sumatera

YUSRA YUSRA, FAUZAN AZIMA, NOVELINA NOVELINA, PERIADNADI PERIADNADI

4

PDF

#### Abundance of Culturable Bacteria Isolated from Maize Rhizosphere Soil Using Four Different Culture Media

ERNIN HIDAYATI, ARIS TRI WAHYUDI, ANTONIUS SUWANTO, RAHAYU WIDYASTUTI

5

PDF



### VISITOR STATISTICS

00215417

MI Visitors since 7 Oct 2015

#### Visitors

ID	11,952	US	1,803
??	1,299	CN	687
IN	598	MY	322
JP	248	TH	233
PH	203	AU	185
KR	163	BR	161
PK	161	VN	148
GB	142	TR	132
MX	121	CA	118
TW	113	DE	103

Pageviews: 27.258

### INDEXING



## Editorial Team

### Editor in Chief

[Dr. Rika Indri Astuti, SSI, MSI](#), Department of Biology, IPB University, Indonesia

### Managing Editor

[Asri Sulfiyanti, SSI, MSI](#), Agency for The assessment and Application of Technology, Indonesia

[Dr. Astutiati Nurhasanah](#), Center for Pharmaceutical and Medical Technology, Agency for The assessment and Application of Technology, Indonesia.

### Editorial Board

[Prof Dr Antonius Suwanto](#), Institut Pertanian Bogor

[Dr. Ir. Siswa Setyahadi](#), MSc. Agency for The assessment and Application of Technology, Indonesia

[Dr Dessy Natalia](#), Institut Teknologi Bandung

[Dr Endang Purwantini](#), Virginia Tech or Virginia Polytechnic Institute and State University

[Prof Brett Neilan](#), School of Biotechnology and Biomolecular Sciences University of NSW

[Prof. Diana Waturangi](#), Univeritas Atmajaya

[Dr Iman Rusmana](#), Bogor Agricultural University, Indonesia, Indonesia

[Dr Kartini Kramadibrata](#), Lembaga Ilmu Pengetahuan Indonesia (LIPI)

[Dr Is Helianti](#), Agency for The assessment and Application of Technology, Indonesia

[Dr Wellyzar Sjamsuridzal](#), Universitas Indonesia

[Prof Dr Norio Kurosawa](#), Department of Environmental Engineering for Symbiosis, Faculty of Engineering, Soka University, Japan

[Prof Dr Yuan Kun Lee](#), National University of Singapore, Singapore

[Dr Neung Tiaamroeng](#), Suranaree University of Technology, Thailand

[Dr Raija Laiho](#), Department of Forest Science, University of Helsinki

[Dr Yaya Rukayadi](#), Universiti Putra Malaysia

### Layout Editor

[Ahmad Nailul Basid](#)

### ISSN AND PUBLISHER

E-ISSN: 2087-8575

P-ISSN: 1978-3477

Sinta Score: "S1"

Accredited at "1st Rank" by Ministry of Research, Technology and Higher Education No. 030/E/KPT/2018 until October 2023



### VISITOR STATISTICS

00224110

MI Visitors since 7 Oct 2015

### Visitors

ID	13,597	US	2,114
???	1,616	CN	787
IN	724	MY	374
JP	299	TH	258
PH	257	AU	204
BR	187	KR	184
PK	177	GB	175
VN	169	TR	157
CA	141	MX	136
TW	125	DE	121

Pageviews: 31.699

## Abundance of Culturable Bacteria Isolated from Maize Rhizosphere Soil Using Four Different Culture Media

ERNIN HIDAYATI<sup>1,3</sup>, ARIS TRI WAHYUDI<sup>1\*</sup>, ANTONIUS SUWANTO<sup>1</sup>,  
AND RAHAYU WIDYASTUTI<sup>2</sup>

<sup>1</sup>*Department of Biology, Faculty of Mathematics and Natural Sciences,  
Institut Pertanian Bogor, Bogor 16680, Indonesia;*

<sup>2</sup>*Department of Soil Science and Land Resources, Faculty of Agriculture,  
Institut Pertanian Bogor, Bogor 16680, Indonesia;*

<sup>3</sup>*Department of Biology, Faculty of Mathematics and Natural Science,  
Universitas Mataram, West Lombok 83125. Indonesia*

Composition and abundance of culturable bacteria of four soil samples (Ktr50II, D50II, G50II, and A50II) were analyzed. The soil samples were collected from maize rhizosphere that planted in dryland Lombok Island. Each soil sample give different growth performance of maize in greenhouse experiment. This study was to investigate the relation of maize growth performance with culturable bacterial community of their rhizosphere and the effect of culture media on number of bacterial isolates recovery. The rhizosphere bacteria were cultured and isolated on commercial media (SEA) and non commercial modification media (NAIn, NAIn-SE and NAIn-RE). Thirty four strains rhizosphere bacteria were obtained from four maize rhizosphere soil samples. D50II is the soil sample that caused the better growth performance to the maize, contrary to Ktr50II. D50II has significantly highest number of culturable bacterial types, while significantly lowest on Ktr50II. In D50II, at least 17 bacterial isolates contributed to better growth performance in maize and have relative abundance of dominant isolate not more than 35.34%. In comparing the rhizosphere bacteria recovered using different culture media, bacteria cultivated on SEA have different growth characteristic compared with bacteria cultivated on NAIn, NAIn SE and NAIn-RE. Six bacterial isolates showed antagonistic ability when grew on SEA but not in all of three media. Compared with commercial media, non commercial modification media can increase total isolates recovery about 70.6%.

Key words: culture media, dryland, maize, rhizosphere bacteria

Telah dilakukan kajian komposisi dan kelimpahan bakteri terkultur dari empat sampel tanah (Ktr50II, D50II, G50II, dan A50II). Sampel tanah dikoleksi dari rizosfer tanaman jagung yang tumbuh di lahan kering Pulau Lombok. Pada penelitian skala rumah kaca diketahui bahwa setiap sampel tanah memberikan performa pertumbuhan berbeda pada tanaman jagung. Penelitian ini bertujuan untuk mengetahui hubungan antara performa pertumbuhan tanaman jagung dengan komunitas bakteri terkultur penghuni daerah perakarannya serta pengaruh media kultur terhadap perolehan isolat bakteri. Bakteri rizosfer di kultur dan diisolasi menggunakan media komersil (SEA) dan media modifikasi non komersil (NAIn, NAIn-SE and NAIn-RE). Sebanyak 34 isolat bakteri diperoleh dari keempat sampel tanah. D50II diketahui memberikan performa pertumbuhan yang lebih baik pada tanaman jagung, sebaliknya Ktr50II memberikan performa pertumbuhan yang buruk. D50II mempunyai jumlah jenis bakteri terkultur paling banyak dan sebaliknya pada Ktr50II. Pada D50II, sedikitnya 17 isolat bakteri terlibat dalam menghasilkan pertumbuhan yang lebih baik pada tanaman jagung, serta dengan jumlah kelimpahan relatif isolat dominan tidak lebih dari 35,34%. Bila membandingkan bakteri rizosfer yang diperoleh dengan media kultur berbeda, terlihat bahwa bakteri yang terkultivasi pada SEA mempunyai karakter pertumbuhan yang berbeda dibandingkan bakteri yang terkultivasi pada NAIn, NAIn-SE and NAIn-RE. Enam isolat bakteri menunjukkan kemampuan antagonis saat tumbuh pada SEA, namun kemampuan tersebut tidak muncul saat tumbuh pada tiga media lainnya. Dengan media modifikasi non komersil dapat meningkatkan perolehan isolat sekitar 70,6% dibandingkan hanya menggunakan media komersial.

Kata kunci: bakteri rizosfer, lahan kering, media kultur, tanaman jagung

Indonesia has marginal land, such as dryland, swamp, swampy, tides and peat. However, they are not utilized optimally (RENSTRA the Ministry of Agriculture 2009). Based on wide area, ecological

potency, social and economic potency, dryland is appropriated to optimize. West Nusa Tenggara (NTB) is one of the provinces in Indonesia with a relatively wide dryland. From the total area (about 1 673 476.307 ha in Lombok and Sumbawa Islands), only about 626 034.60 ha that can be developed (BAPPEDA NTB

\*Corresponding author; Phone/Fax: +62-251-8622833, Email: [aristri2011@gmail.com](mailto:aristri2011@gmail.com)

2003). Now, the dryland is being actively used primarily for maize plantation.

Soil microbes have a significant role in the soil ecosystem. So that they can be used as a selective indicator of soil and also as the main index to evaluate the soil quality and global diversity (Zhang *et al.* 2013). Therefore, soil microbes are feasible for fundamental components that could be considered as one of the management strategies for sustainable agriculture in dryland. Soil microbial communities can be influenced by many factors. Several studies showed that rhizosphere bacterial communities of maize influenced by complex interaction, such as soil type (Castellanos *et al.* 2009), plant growth stage (Di Cello *et al.* 1997), cultivar (Dohrmann *et al.* 2013) and genotype (Schmalenberger and Tebbe 2003). Although growing on the same soil type, same species and age of plant, sometimes individually of maize has a different growth performance. This case has not been ever studied yet, especially in dryland Lombok Island. According to Li *et al.* (2014), rhizosphere bacteria have significant contribution to crop health, productivity and carbon sequestration. Thus it is predicted that the difference of plant growth performances have relation to rhizosphere bacterial community of that plant.

Rhizosphere bacterial communities have been analyzed using cultivation technique and metagenome. Although many molecular techniques used to study many aspects of environmental microbes, but this technique has disadvantage, such as inavailability of culture isolates. As a result, it is impossible to study some aspects related to the life and function of the isolates. Cultivation technique have significantly contributed to our understanding of living microbes (Pham and Kim 2012). Until now, cultivation technique is fundamental tool to provide access to diverse characteristics and physiology of microbes (Reid and Buckley 2011). Culture isolates obtained can be stored for further analysis and application. Cultivation technique is also not expensive relatively. This method can be applied by many laboratories, including laboratories in developing countries. Because of this technique has been done since long time ago, so that the results of this technique has been well documented that could be useful for comparison of metagenome.

The study of microbial communities based on cultivation techniques highly depend on culture media. The problem is that soil as complex media for microbial growth in which they are interacting each other. Many progress have been obtained from

cultivation-based methods, especially related to modification of nutrient culture media, such as by reducing nutrient component and concentration of culture media (Aagot *et al.* 2001; Connon and Giovanni 2002; Schoenborn *et al.* 2004), adding growth stimulant (Nichols *et al.* 2008; D'Onofrio *et al.* 2010), soil extract amended (Hamaki *et al.* 2005; O'Neill *et al.* 2009; George *et al.* 2011) plant juice supplemented (Stamer *et al.* 1970; Nour *et al.* 2010) and adding exudates of artificial root and root exudates (Baudoin *et al.* 2003; Kozdroj; Louvel *et al.* 2011 and van Elsas 2000). To date, no single media that can bring satisfaction for microbial cultivation.

Because of the facts that Lombok Island dryland will be developed for plantation of agricultural crops, especially maize, it is important to explore many aspects of culturable bacterial community of the dryland related to maize plantation. To cover greater bacterial isolate, this study improved modification of culture media by supplementing soil extract and root extract of maize on low nutrient concentration media. The goal of this study was to explain the contribution of dryland culturable bacterial community to give good growth performance of maize. Accordingly, this investigation examines the relation of maize growth performance with culturable bacterial community of their rhizosphere and the effect of culture media on number of bacterial isolates recovery.

## MATERIALS AND METHODS

**Soil Sampling.** Four types of rhizosphere soil samples used in this study, namely Ktr50II, D50II, G50II, and A50II. The soil samples were collected from rhizosphere of two months age of maize (*Zea mays* var BISI 2) that grew in dryland field located at Lombok Island, West Nusa Tenggara, Indonesia (S 08°13'42.4", E 116°21'24.4"). Study of soil samples continued in greenhouse experiment on the growth of maize for 30 d. As a result, each soil sample application showed different vegetative growth performance of maize in greenhouse. D50II gave better growth performance of maize, A50II and Ktr50II gave worse growth performance, and G50II gave medium growth performance. Maize root mass were taken from the field and placed in plastic bags labeled. The rhizosphere soil samples were collected as described by Phillips and Fahey (2006). All soil samples were placed into sterile plastic bags labeled and stored in the refrigerator at 6-7 °C.



**Preparation of Culture Media.** Rhizosphere bacteria were cultivated using commercial culture media (Soil Extract Agar) and non commercial modification culture media (NAIn, NAIn-SE and NAIn-RE). Soil Extract Agar (SEA, HIMEDIA, Mumbai, India) consisted of 1 g L<sup>-1</sup> glucose, dipotassium phosphate 0.50 g L<sup>-1</sup>, 17.75 g L<sup>-1</sup> soil extract, and 15 g L<sup>-1</sup> agar. Nutrient Agar low nutrient (NAIn) consisted of 1% (0.08 g L<sup>-1</sup>) Nutrient Broth (Criterion, Santa Maria, CA) and 18 g L<sup>-1</sup> agar powder. Nutrient Agar low nutrient supplemented with soil extract (NAIn-SE) consisted of NAIn and 50% soil extract. Nutrient Agar low nutrient supplemented with root extract of maize (NAIn-RE) consisted of NAIn and 25% soil extract. On each medium, 50 µg mL<sup>-1</sup> of antifungal nystatin was added.

Firstly, soil extract and root extract prepared. Soil extract was taken from soil in Lombok Island dryland. One part of soil sample was mixed with two parts of sterile water (*w/v*). Soil slurry was sterilized for 1 h (O'Neill *et al.* 2009) and then allowed 24 h at room temperature. The supernatant was filtered with thick layer sterile cotton. The liquid of soil extract was stored at 6-7 °C. The maize root extract was prepared from maize root mass (*Zea mays* var BISI 2). One part of the root mixed with two parts of sterile water (*w/v*). Root slurry was sterilized for 20 min and then allowed 24 h at room temperature. The supernatant was filtered with thick layer sterile cotton. The liquid of soil extract was stored at 6-7 °C.

**Cultivation and Growth Ability of Rhizosphere Soil Bacteria.** Ten grams of soil samples were suspended in 90 mL of sterile saline (0.85% NaCl). The soil suspension was shaken on a rotary shaker for 15 min. From dilutions 10<sup>-3</sup>, 10<sup>-4</sup>, 10<sup>-5</sup>, 10<sup>-6</sup>, and 10<sup>-7</sup>, 100 µL aliquots of suspensions were spreaded on the surface of all of four culture media and incubated at 28 °C for 7 days. During incubation, total colony forming unit (CFU), number of bacterial isolates, and CFU of each isolate were determined. Cultural morphology, colony texture, colony pigmentation, and cell characteristics were recorded. The colonies were also streaked on each medium to verify their characteristic to avoid double identification. Interesting isolates were identified based on size of Terminal Restriction Fragment (TRFs) of 16S rDNA were digested with the MSpI restriction enzyme. Purified bacterial isolates were stored in 20% glycerol at -20 °C for use throughout the study.

**Antagonistic Assay.** Some previous studies suggested that bacteria in mix culture could inhibit the growth of other bacteria by producing antibacterial substance. In this study, the bacterial isolates were also examined for their antagonistic ability to inhibit other isolates. The suspected of antagonist isolates were streaked on the edge of agar plate of all culture media and incubated at 28 °C. Three days after incubation, tested isolates were streaked horizontally 5 mm in opposite to antagonist and further prolonged incubating for 2 weeks. Inhibition activity of antagonists were determined as the positive ability when the colony of testing isolates was retarded.

**Statistical Analysis.** Each treatment was made in 3 replicate. All result enumerations of isolates and colony were analyzed using Anova 5% and then followed by using Turkey Method of minitab 16.

## RESULTS

**Abundance of Bacteria Isolated from Maize Rhizosphere Soil.** Thirty-four bacteria isolates were cultivated from four maize rhizosphere soil (Ktr50II, D50II, G50II, and A50II) using four culture media (SEA, NAIn, NAIn-SE, and NAIn-RE). The number and isolate types in each rhizosphere soil sample are showed in Fig 1 A. Number of isolate types were significantly higher in D50II and significantly lowest in Ktr50II. At least 17 of the 34 isolates (50%) were found in D50II. A further 12 of 34 isolates (35.29%) were found in A50II, nine of the 34 isolates (26.47%) were found in G50II, and five of the 34 isolates (14.70%) were found in Ktr50II. Based on bacterial isolates distribution of each soil sample, 18 of 34 isolates (52.9%) were found in certain soil samples and the other found in more than one soil samples. Based on colony forming unit (CFU), the number of CFU was significantly higher in G50II (13.05x10<sup>7</sup>) and then decreased from D50II (5.07x10<sup>7</sup>), A50II (1.87x10<sup>7</sup>), and Ktr50II (1.25x10<sup>7</sup>) (Fig 1 B).

Comparison of isolate abundance showed that each rhizosphere soil sample has different relative abundance pattern. D50II has the most abundance isolates and then decreasing from A50II, G50II, and Ktr50II (Fig 2). Each soil sample was inhabited by different dominant isolate type. For examples, CDL 30 is the most abundant isolate found in Ktr50II, CDL 38 found abundance in D50II, CDL 6 found abundance in G50II, and CDL 33 found abundance in A50II. Relative

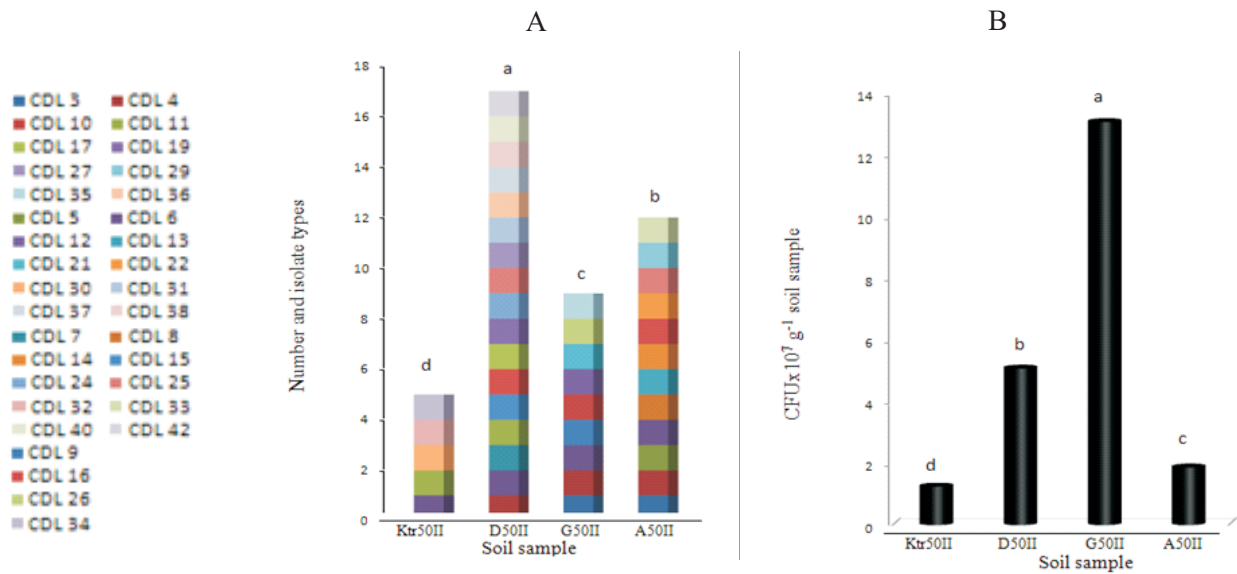


Fig 1 Comparison of number and isolate type (A) and colony forming unit (B) of maize rhizosphere bacteria cultivated from maize rhizosphere soil samples cultivated using four culture media (SEA, NAln, NAln-SE, and NAln-RE).

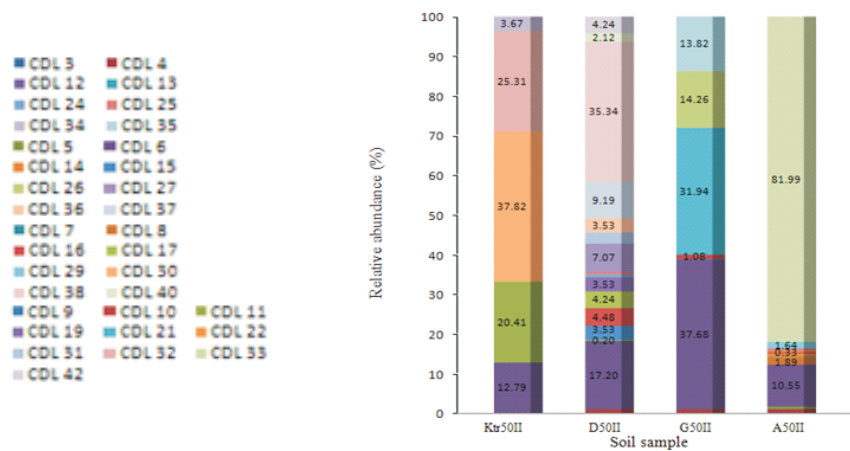


Fig2 Estimation of relative abundance of maize rhizosphere bacteria from Lombok Island dryland related to different growth performance of maize made by cultivation technique using four different culture media.

abundance of dominant isolate found in D50II showed not more than 35.34%, while in the other soil samples more than 37.60%. CDL 6 was detected as a predominant isolate was found in all soil samples. CDL 6 is known to having 123 TRF size digested with the MspI restriction enzyme.

**Ability of Each Culture Media to Cultivate the Rhizosphere Bacteria.** Fourteen of the 34 isolates were cultivated on NAln-RE, 12 of 34 isolates were

cultivated on NAln, 11 of the 34 isolates were cultivated on NAln-SE, and 10 of the 34 isolates were cultivated on SEA (Fig 3). At least 5 isolate types shared cultivated on NAln, NAln-SE and NAln-RE, 6 isolate types shared on NAln-SE, and NAln-RE, while 7 isolate types shared on NAln, NAln-SE and NAln-RE. At least 29.4% of bacterial isolates were cultivated on SEA only while the remaining (70.6%) were cultivated on NAln, NAln-SE, and NAln-RE.

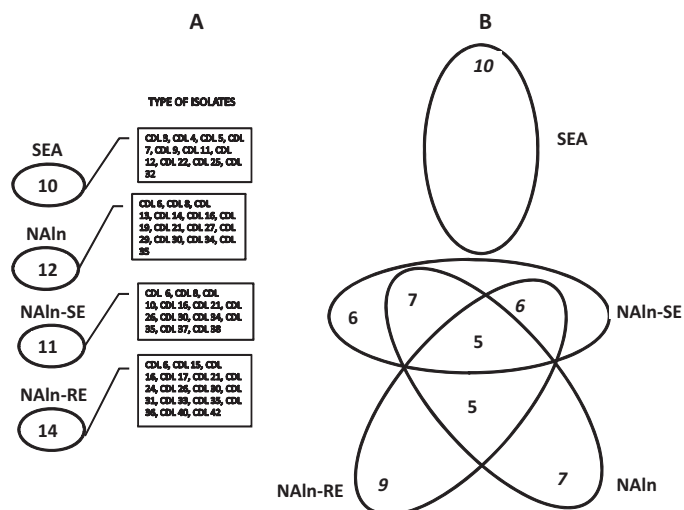


Fig 3 Comparison of number and isolate type isolated using four culture media (A) and number of isolate shared among culture media (B).

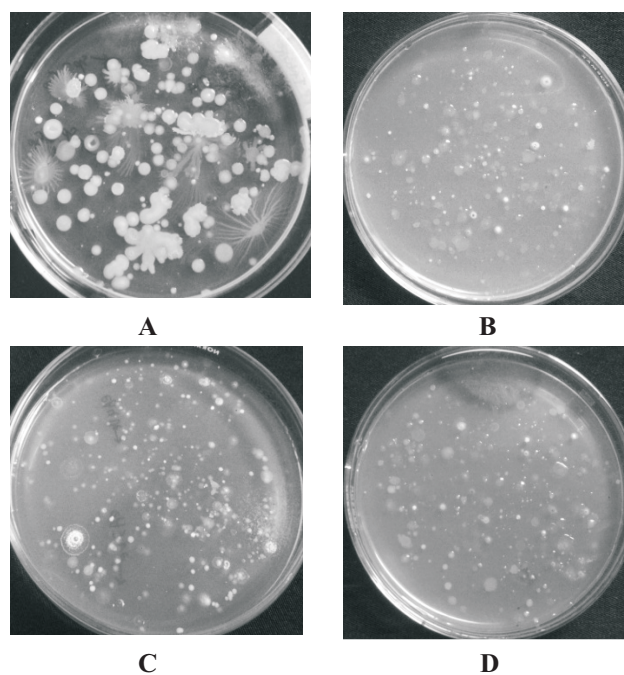


Fig 4 Appearance of colony development of maize rhizosphere bacteria on SEA (A), NAIn (B), NAIn-SE (C), and NAIn-RE (D) at  $10^{-3}$  dilution after 6 days of incubation.

**Growth Differences of Bacterial Isolates on Each Culture Medium.** Nearly all bacterial colonies developed on SEA have different morphological appearances compared with NAIn, NAIn-SE and NAIn-RE (Fig 4). The bacterial colonies were cultivated on SEA developed during the first day of incubation. The characteristic of these colonies were as follows: fast growing, colony diameter average of 2.0 - 2.5 mm with clear differences among each colony morphology (Fig 4 A). When the dilution higher than  $10^5$ , only dominated with growing of certain isolates.

The growth of these isolates usually followed by appearance the yellowish color surrounding the colonies. Bacterial colonies were cultivated on NAIn, NAIn-RE, and NAIn-SE developed after 3 days of incubation. The characteristic of the colonies were as follows: slow growing, colony diameter average of 0.5-2.0 mm, and many of these are very thin and transparent (Fig 4 B, C, D). Cultivated bacteria from dilution higher than  $10^5$  not showed phenomena such as on SEA. Physiological differences were also found only in six isolates such as CDL 12, CDL 19, CDL 25,

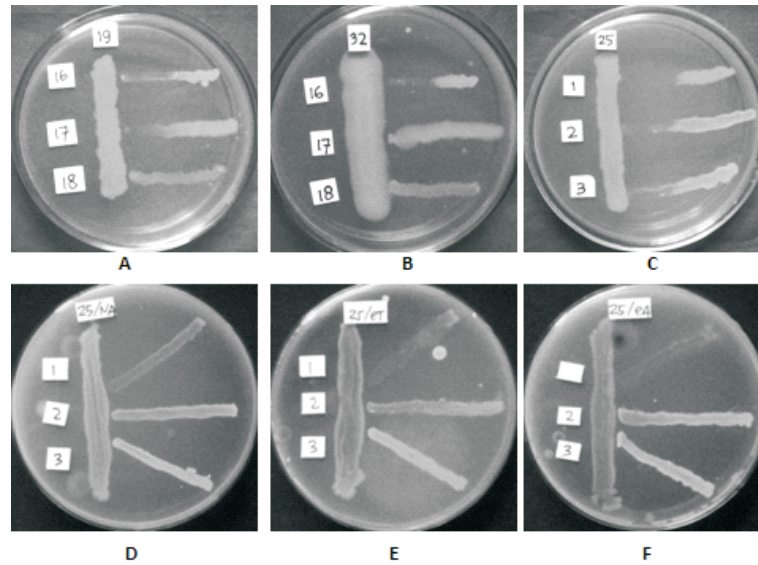


Fig 5 Bacterial antagonist (in vertical streak) isolated from maize rhizosphere soil bacteria. Antagonistic ability developed when grew on SEA (A, B, C) but not on NAln (D), NAln-SE (E), and NAln-RE (F).

CDL 26, CDL 30, and CDL 32, where those isolates produced yellowish color around the colonies when grew on SEA. This evidence did not happen when they grew on NAln, NAln-SE, and NAln-RE.

#### Antagonistic Ability in Some Bacterial Isolates.

Antagonistic assay was done to six isolates (CDL 12, CDL 19, CDL 25, CDL 26, CDL 30, and CDL 32) that produced yellowish color when grew on SEA. This assay showed that ability to produce yellowish color is related to antagonistic ability of the isolates in inhibiting the growth of other isolates (Fig 5). The antagonistic ability only showed when the antagonist grew on SEA (Fig 5 A, B, C) and not on NAln, NAln-SE and NAln-RE (Fig 5 D, E, F). The antagonist inhibited the growth of certain isolates but not in other isolates.

The CDL 30 and CDL 32 were detected as the higher relative abundance in Ktr50II. CDL 30 known to having 486 TRF size and showed 98% score identity similar with *Pseudomonas stutzeri* (NR\_114751), while CDL 32 known to having 485 TRF size and showed 97% score identity similar with *Pseudomonas pseudoalcaligenes* (NR\_037000). In the other soil samples, relative abundance of the antagonist less than 15%.

## DISCUSSION

This study is the first recorded of the maize rhizosphere bacterial states in Lombok Island dryland.

The results of this experiment showed that based on total number isolates and colony forming unit (CFU), D50II has higher number of bacterial isolates compared with other soil samples. Despite D50II has lower number of CFU compared with G50II, the number of CFU about  $5.07 \times 10^7$  is more likely produced better growth. As for the G50II, although that soil sample has higher of CFU compared with D50II, less number of isolate likely it was not enough to produce better growth as D50II. Despite of A50II has higher number of isolates but less number of CFU may caused poor growth compared with G50II. In Ktr50II, lowest number of isolates and CFU may caused the worse growth. This result explained that the number of bacterial isolates more important to maize growth than total CFU. In addition, each kind of bacteria should be present in a sufficient number to be able to affect the growth of maize. The results indicated that the maize growth performance influenced by number and isolate type on the soil samples.

Although the number of isolate types in A50II significantly higher than G50II, but the community seemed to be dominated by only one type of isolate is CDL33, which the relative abundance about 81.99% (Fig 2). In addition to number of isolate type and CFU, the relative abundance pattern that composed each soil type may contribute to differentiation of the growth performance of maize. It predicted that more abundant bacteria with balance composition should give better effect to maize growth.



More previous study showed many aspects that known to influence the microbial community (Di Cello *et al.* 1997; Schmalenberger and Tebbe 2003; Dohrmann *et al.* 2013). In this study, when the influence of the abiotic factors and plant are reduced, it appeared that the rhizosphere bacterial community contributed to influence the growth of maize. It is assumed that abundance of the origin microbial status in dryland is the initial factor that influence the growth of maize.

The results also showed that 52.9% of bacterial isolates were found in certain soil sample and the other found on more than one soil samples. The similarity of isolate type was found in the soil samples may it is because of the soil samples taken from the same soil type from the same location. While the variation of isolate type was found in the soil samples may it is because of each soil sample has different origin microbial diversity since they are in the land. Furthermore, the differences of diversity which contributed to the differences of maize growth performance.

By doing variation in composition of media such as low concentration of nutrients (NAIn), low concentration of nutrients supplemented by soil extract (NAIn-SE) and supplemented by maize root extract (NAIn-RE) increased the number of culturable bacteria obtained from the soil sample compared with commercial media only. It was suggested that the different nutrient composition is likely affected the number and type of bacterial cultivated on each media. In this experiment, rich nutrient composition of the SEA may provide conditions that allow for certain groups of bacteria to grow rapidly and dominate each other, while the slow growing bacteria will eliminated with no space to grow. In contrast to the NAIn, NAIn-SE and NAIn-RE, poor nutrient composition provide conditions that allow the slow growing and dormant bacteria to grow. The similar results also found by other researcher (Brozel and Cloete 1992; Joseph *et al.* 2003).

The soil extract and root extract were supplemented to NAIn-SE and NAIn-RE respectively, may also contribute as a selection factor of the types of rhizosphere soil bacteria. According to Hamaki *et al.* (2005), soil bacteria and actinomycetes can grow on soil extract agar media but not on conventional media. Some experiments also showed that medium of soil extract amended was suitable for growth of fastidious soil bacteria (Davis *et al.* 2005) and also reduce

diversity and dominance of fast growing bacteria (Kozdroj and van Elsas 2000).

According to Tamaki *et al.* (2005), bacteria in mix culture can produced antibacterial substances to inhibit the growth of other bacteria. Dominance also contributed to the ability of organisms to produce extracellular antibacterial component (Rao *et al.* 2005). Refer to Tamaki *et al.* (2005) and Rao *et al.* (2005), it is likely that the antagonistic ability of six isolates (CDL 12, CDL 19, CDL 25, CDL 26, CDL 30, and CDL 32) may caused by antibacterial substances that produced by the isolates. The antagonistic ability of these rhizosphere soil bacteria not only when they are in the form of mixed cultures but also explained the relationship between type of culture media and antagonistic ability of the bacteria. This antagonistic mechanism may one of the factor causing fewer number of cultivated bacteria and lower total CFU of bacteria on SEA.

## REFERENCES

- Aagot N, Nybroe O, Nielsen P, Johnsen K. 2001. An altered *Pseudomonas* diversity is recovered from soil by using nutrient-poor *pseudomonas*-selective soil extract media. *Appl Environ Microbiol.* 67(11): 5233-5239. doi:10.1128/AEM.67.11.5233-5239.2001.
- [BAPPEDA] 2003. Strategic plan for the development of dryland regions of NTB Province 2003-2007.
- Baudoin E, Benizri E, Guckert A. 2003. Impact of artificial root exudates on the bacterial community structure in bulk soil and maize rhizosphere. *Soil Biol Biochem.* 35: 1183-1192. doi:10.1016/S0038-0717(03)00179-2.
- Brozel VS, Cloete TE. 1992. Evaluation of nutrient agars for the enumeration of viable aerobic heterotrophs in colling water. *Wat Res.* 26(8):1111-1117. doi:10.1016/0043-1354(92)90148-W.
- Castellanos T, Dohrmann AB, Imfeld G, Baumgarte S, Tebbe CC. 2009. Search of environmental descriptors to explain the variability of the bacterial diversity from maize rhizospheres across a regional scale. *Eur J Soil Biol.* 45:383-393. doi:10.1016/j.ejsobi.2009.07.006
- Connon SA, Giovanni SJ. 2002. High-throughput m for culturing microorganisms in very-low-nutrient media yield diverse new marine isolates. *Appl Environ Microbiol.* 68(8): 3878-3885. doi: 10.1128/AEM.68.8. 3878-3885.2002.
- Davis KE, Joseph SJ, Jansen PH. 2005. Effects of growth medium, inoculums size, and incubation time on culturability and isolation of soil bacteria. *Appl Environ Microbiol.* 71 (2): 826-834. doi: 10.1128/AEM.71.2. 826-834.2005
- Di Cello F, Bevivino A, Chiarini L, Fani R, Paffetti D, Tabacchioni S, Dalmastri C. 1997. Biodiversity of a

- Burkholderia cepacia* population isolated from the maize rhizosphere at different plant growth stages. *Appl Environ Microbiol.* 63(11): 4485-93.
- D'Onofrio A, Crawford JM, Stewart EJ, Witt K, Gavrish E, Epstein S, Clardy J, Lewis K. 2010. Siderophores from neighboring organisms promote the growth of uncultured bacteria. *Chem Biol.* 17(3): 254-64. doi:10.1016/j.chembiol.2010.02.010.
- Dohrmann AB, Küting M, Jünemann S, Jaenicke S, Schlüter A, Tebbe CC. 2013. Importance of rare taxa for bacterial diversity in the rhizosphere of *Bt*- and conventional maize varietie. *The ISME Journal* 7: 37-49. doi:10.1038/ismej.2012.77.
- George IF, Hartmann M, Liles MR, Agathos SN. 2011. Recovery of as-yet-uncultured soil *Acidobacteria* on dilute soil media. *Appl Environ Microbiol.* 77(22): 8184-8188. doi:10.1128/AEM.05956-11.
- Hamaki T, Suzuki M, Fudou R, Jojima Y, Kajiura T, Tabuchi A, Sen K, Shibai H. 2005. Isolation of novel bacteria and actinomycetes using soil-extract agar medium. *J Biosci Bioeng.* 99(5): 485-492. doi: 10.1263/jbb.99.485.
- Joseph SJ, Hugenholtz P, Sangwan P, Osborne CA, Janssen PH. 2003. Laboratory cultivation of widespread and previously uncultured soil bacteria. *Appl Environ Microbiol.* 69 (12): 7210-7215. doi: 10.1128/AEM.69.12.7210-7215.2003.
- Kozdroj J, van Elsas JD. 2000. Response of the bacterial community to root exudates in soil polluted with heavy metals assessed by molecular and cultural approaches. *Soil Biol Biochem.* 32: 1405-1417.
- Li X, Rui J, Mao Y, Yannarell A, Mackie R. 2014. Dynamics of the bacterial community structure in the rhizosphere of a maize cultivar. *Soil Biol Biochem* 68 (2014) 392-401.
- Louvel B, Cébron A, Leyval C. 2011. Root exudates affect phenanthrene biodegradation, bacterial community and functional gene expression in sand microcosms. *Int Biodeter Biodegr.* 65: 947-953. doi:10.1016/j.ibiod.2011.07.003.
- Nichols D, Lewis K, Orjala J, Mo S, Ortenberg R, O'Connor P, Zhao C, Vouros P, Kaerberlein T, Epstein SS. 2008. Short peptide induces an "uncultivable" microorganism to grow in vitro. *Appl Environ Microbiol.* 74(15): 4889-4897. doi:10.1128/AEM.00393-08.
- Nour EH, Hamza MA, Fayez M, Monib M, Ruppel S, Hegazi NA. 2010. The crude plant juices of desert plants as appropriate culture media for the cultivation of rhizospheric microorganisms. *J Adv Res.* 3: 35-43. doi:10.1016/j.jare.2011.03.002.
- O'Neill B, Grossman J, Tsai MT, Gomes JE, Lehmann J, Peterson J, Neves E, Thies JE. 2009. Bacterial community composition in brazilian anthrosol and adjacent soils characterized using culturing and molecular identification. *Microb Ecol.* 58(1): 23-35. doi:10.1007/s00248-009-9515-y.
- Pham VHT, Kim J. 2012. Cultivation of unculturable soil bacteria. *Trends in Biotechnol.* 30(9): 475-484.
- Phillips RP, Fahey TJ. 2006. Tree species and mycorrhizal associations influence the magnitude of rhizosphere effects. *Ecology* 87(5): 1302-1313.
- Rao D, Webb JS, Kjelleberg S. 2005. Competitive interactions in mixed-species biofilms containing the marine bacterium *Pseudoalteromonas tunicate*. *Appl Environ Microbiol.* 71(4): 1729-1736. doi: 10.1128/AEM.71.4.1729-1736.2005.
- Reid A, Buckley M. 2011. *The Rare Biosphere: A report from the American Academy of Microbiology.* Washington, DC 20036. p 1-28.
- [RENSTRA] 2009. Strategic Plan of the Ministry of Agriculture 2010-2014.
- Schmalenberger A, Tebbe CC. 2003. Bacterial diversity in maize rhizospheres: conclusions on the use of genetic profiles based on PCR-amplified partial small subunit rRNA genes in ecological studies. *Mol Ecol.* 12(1): 51-262. doi: 10.1046/j.1365-294X.2003.01716.x.
- Zhang X, Ma L, Gilliam FS, Wang Q, Li C. 2013. Effects of raised-bed planting for enhanced summer maize yield on rhizosphere soil microbial functional groups and enzyme activity in Henan Province, China. *Field Crops Res.* 130: 28-37. doi:10.1016/j.fcr.2012.02.008.