

5th International Conference on Rehabilitation and Maintenance in Civil Engineering:
"Advanced Research and Technology for Rehabilitation and Maintenance in Civil Engineering"
Surakarta, Indonesia on 8-9 July 2021



CERTIFICATE OF APPRECIATION

Presented to:

NGUDIYONO, TRI SULISTYOWATI

as AUTHOR(S)

of paper entitled "Numerical Simulation of Slope Stability for Soil Embankment Reinforced with Inclined Bamboo Piles"

Dr. (techn) Sholihin As'ad

Dean of Faculty of Engineering

Dr. Eng. Halwan Alfisa Saifullah

Chairman



CONFERENCE PARTNERS:



Lecture Notes in Civil Engineering

Stefanus Adi Kristiawan
Buntara S. Gan
Mohamed Shahin
Akanshu Sharma *Editors*

Proceedings of the 5th International Conference on Rehabilitation and Maintenance in Civil Engineering

ICRMCE 2021, July 8–9, Surakarta,
Indonesia

 Springer

Lecture Notes in Civil Engineering

Volume 225

Series Editors

Marco di Prisco, Politecnico di Milano, Milano, Italy

Sheng-Hong Chen, School of Water Resources and Hydropower Engineering,
Wuhan University, Wuhan, China

Ioannis Vayas, Institute of Steel Structures, National Technical University of
Athens, Athens, Greece

Sanjay Kumar Shukla, School of Engineering, Edith Cowan University, Joondalup,
WA, Australia

Anuj Sharma, Iowa State University, Ames, IA, USA

Nagesh Kumar, Department of Civil Engineering, Indian Institute of Science
Bangalore, Bengaluru, Karnataka, India

Chien Ming Wang, School of Civil Engineering, The University of Queensland,
Brisbane, QLD, Australia

Lecture Notes in Civil Engineering (LNCE) publishes the latest developments in Civil Engineering - quickly, informally and in top quality. Though original research reported in proceedings and post-proceedings represents the core of LNCE, edited volumes of exceptionally high quality and interest may also be considered for publication. Volumes published in LNCE embrace all aspects and subfields of, as well as new challenges in, Civil Engineering. Topics in the series include:

- Construction and Structural Mechanics
- Building Materials
- Concrete, Steel and Timber Structures
- Geotechnical Engineering
- Earthquake Engineering
- Coastal Engineering
- Ocean and Offshore Engineering; Ships and Floating Structures
- Hydraulics, Hydrology and Water Resources Engineering
- Environmental Engineering and Sustainability
- Structural Health and Monitoring
- Surveying and Geographical Information Systems
- Indoor Environments
- Transportation and Traffic
- Risk Analysis
- Safety and Security

To submit a proposal or request further information, please contact the appropriate Springer Editor:

- Pierpaolo Riva at pierpaolo.riva@springer.com (Europe and Americas);
- Swati Meherishi at swati.meherishi@springer.com (Asia - except China, and Australia, New Zealand);
- Wayne Hu at wayne.hu@springer.com (China).

All books in the series now indexed by Scopus and EI Compendex database!

More information about this series at <https://link.springer.com/bookseries/15087>

Stefanus Adi Kristiawan ·
Buntara S. Gan · Mohamed Shahin ·
Akanshu Sharma
Editors

Proceedings of the 5th International Conference on Rehabilitation and Maintenance in Civil Engineering

ICRMCE 2021, July 8–9,
Surakarta, Indonesia

 Springer

Editors

Stefanus Adi Kristiawan
Department of Civil Engineering
Universitas Sebelas Maret
Surakarta, Indonesia

Buntara S. Gan
College of Engineering
Nihon University
Tokyo, Japan

Mohamed Shahin
Department of Civil Engineering
Curtin University
Perth, WA, Australia

Akanshu Sharma
Institute of Construction Materials
University of Stuttgart
Stuttgart, Germany

ISSN 2366-2557

ISSN 2366-2565 (electronic)

Lecture Notes in Civil Engineering

ISBN 978-981-16-9347-2

ISBN 978-981-16-9348-9 (eBook)

<https://doi.org/10.1007/978-981-16-9348-9>

© The Editor(s) (if applicable) and The Author(s), under exclusive license to Springer Nature Singapore Pte Ltd. 2023

This work is subject to copyright. All rights are solely and exclusively licensed by the Publisher, whether the whole or part of the material is concerned, specifically the rights of translation, reprinting, reuse of illustrations, recitation, broadcasting, reproduction on microfilms or in any other physical way, and transmission or information storage and retrieval, electronic adaptation, computer software, or by similar or dissimilar methodology now known or hereafter developed.

The use of general descriptive names, registered names, trademarks, service marks, etc. in this publication does not imply, even in the absence of a specific statement, that such names are exempt from the relevant protective laws and regulations and therefore free for general use.

The publisher, the authors, and the editors are safe to assume that the advice and information in this book are believed to be true and accurate at the date of publication. Neither the publisher nor the authors or the editors give a warranty, expressed or implied, with respect to the material contained herein or for any errors or omissions that may have been made. The publisher remains neutral with regard to jurisdictional claims in published maps and institutional affiliations.

This Springer imprint is published by the registered company Springer Nature Singapore Pte Ltd. The registered company address is: 152 Beach Road, #21-01/04 Gateway East, Singapore 189721, Singapore

Foreword

The International Conference on Rehabilitation and Maintenance in Civil Engineering (ICRMCE) is a triennial conference that aims to provide a forum for researchers, academicians (professors, lecturers, and students), government agencies, consultants, and contractors to exchange experiences, technological advancement, and innovations in the world of civil engineering, specifically in the fields of rehabilitation and maintenance. The previous four ICRMCE conferences took place successfully in 2009, 2012, 2015, and 2018. Hundreds of researchers worldwide attended these events to present their scientific papers in various areas of civil engineering such as material engineering, structural engineering, geotechnical engineering, transportation engineering, and construction management.

This year's conference was organized by Sebelas Maret University in collaboration with Mataram University. The conference was initially scheduled offline in Mataram, Indonesia. However, due to the escalating coronavirus (COVID-19) outbreak and the need for social distancing, we decided to hold the conference online. Some reputable universities and institutions are participating in the current ICRMCE as partners. Among them are Nihon University, University of Stuttgart, National Taiwan University, TU Delft, Hiroshima University, Diponegoro University, Muhammadiyah University of Yogyakarta, Jenderal Soedirman University, University of Jember, UPN Veteran East Java, the National Center for Research on Earthquake Engineering (NCREE) Taiwan, Himpunan Ahli Konstruksi Indonesia (HAKI), and Himpunan Ahli Teknik Tanah Indonesia (HATTI).

The ICRMCE 2021 was successfully held on July 8–9. Presenters who joined this conference came from Japan, Singapore, Malaysia, China, Vietnam, Taiwan, England, the Netherlands, Kuwait, and Indonesia. Furthermore, several outstanding keynote speakers gave a presentation of the state-of-the-art findings in the field of civil engineering. Our esteemed speakers are Prof. Shyh-Jiann Hwang (National Taiwan University), Prof. Buntara Sthenly Gan (Nihon University), Dr. Edgar Bohner (VTT Technical Research Centre of Finland), and Prof. Mohamed Shahin (Curtin University).

In the process of organizing this conference, we received invaluable motivation, advice, and support from several individuals and institutions. I intend to express my gratitude and appreciation to all of them. First, my most profound appreciation goes to all organizing committee members who worked day and night preparing this conference. Special thanks to the conference and media partners for their generous support. We also express our gratitude to Prof. S.A. Kristiawan (Sebelas Maret University), Dr. Ing. Akanshu Sharma (University of Stuttgart), Prof. Mohamed Shahin (Curtin University), and Prof. Buntara Sthenly Gan (Nihon University) for their willingness to serve as the editors of the 5th ICRMCE proceedings.

Halwan Alfisa Saifullah
The 5th ICRMCE Chairman

Preface

Civil engineering infrastructures are the backbone for the continuous development of civilization. Managing these infrastructures is essential in keeping the quality of services they provide to the community. A decline in the performance of key infrastructure will have an impact on the quality of these services, which in turn can cause social and economic problems. A variety of factors affects the performance of infrastructure. In each case, the declining performance of infrastructure requires an appropriate and adaptive response to offer effective solutions. Protection, maintenance, repair, and retrofitting are part of the various solutions that can be implemented. All of these solutions are assisted by technological developments related to repair materials, methodologies, systems, management, and operational efficiency, as well as economic and social considerations.

Infrastructure performance is also inevitably affected by exposure to hazards originating from natural and environmental conditions such as earthquakes, landslides, and floods, among others. Therefore, hazard mitigation is also an interesting topic of discussion. In addition, risk reduction and safety are among the most important issues of infrastructure management. Finally, various perspectives on sustainability in civil engineering are also covered in this conference.

This book is a collection of papers presented at the 5th International Conference on Rehabilitation and Maintenance in Civil Engineering (ICRMCE) 2021 that deals with the issues stated above. The papers are grouped into sequential themes representing the structure of this book:

- Part I: Factors affecting performance of buildings and infrastructures
- Part II: Assessment, protection, maintenance, repair, and retrofitting of buildings and infrastructures
- Part III: Maintenance management of buildings and infrastructures
- Part IV: Hazard mitigation
- Part V: Risk reduction and safety management
- Part VI: Sustainability aspects in transportation engineering
- Part VII: Sustainability aspects in construction projects

- Part VIII: Sustainability aspects in water resources management
- Part IX: Construction materials for sustainable infrastructures

Postgraduate students, researchers, and practitioners who would like to update their knowledge on the topics above will find this book very useful.

Surakarta, Indonesia

Stefanus Adi Kristiawan
Chief Editor

Contents

Factors Affecting Performance of Buildings and Infrastructures	
A Review on Application of Machine Learning in Building Performance Prediction	3
R. W. Triadji, M. A. Berawi, and M. Sari	
The Effect of P-Delta and P-Delta Plus Large Displacements Modelling on Lateral and Axial Displacement	11
Jonie Tanijaya and Robby S. Kwandou	
Effect of Regulatory Change in Earthquake Load Analysis on Structures with Irregular Shapes	27
Hendramawat Aski Safarizki and Dini Ayu Saputri	
Seismic Performance of Tall and Slender Minaret Structure with Hexagonal RC Wall Section by Means Fragility Curve Development	37
Erik Wahyu Pradana, Senot Sangadji, and Angga Destya Navara Noor	
Role of Diagonal Bars in Reinforced Concrete Deep Beams Tested Under Static Load	47
Erwin Lim and Rahmat Ramli	
Analysis of Reinforced Concrete Capacity for Irregular Cross-Sections Using Numerical Methods	57
Nuroji	
Assessment of Retaining Wall Design in Harris Skyline Tower’s Basement, Surabaya	69
Siti Nurlita Fitri and Ahmad Soimun	
Additional Vertical Movement of the Single Pile Foundation with Combined Loads	83
Sumiyati Gunawan, Niken Silmi Surjandari, Bambang Setiawan, and Yusep Muslih Purwana	

The Influence of the Number and Height Steps of Terraced Model on Slope Stability Analysis	95
Niken Silmi Surjandari, Siti Nurlita Fitri, and Fenty Madani	
Validation of TRMM Rainfall Data on Slope Stability in Karanganyar, Indonesia	107
David Raja Simare Mare, Rr Rintis Hadiani, and Raden Harya Dananjaya	
Rubberized Asphalt Pilot Road Trial in Kuwait	117
H. Al-Baghli, Z. S. Awadh, and S. E. Zoorob	
Application of the Updated PSHA on the Stability Analysis of the Meninting Diversion-Spillway Tunnel in Lombok Island—Indonesia . . .	129
Didi S. Agustawijaya, Ria R. Marlaningtyas, Suryawan Murtiadi, Mudji Wahyudi, Muhajirah, Hartana, and Ausa R. Agustawijaya	
Risk and Stability Evaluation of Klego Dam, Boyolali, Indonesia	141
Suharyanto, Kresno Wikan Sadono, Rizqi Iqbal Maulana, P. Arie Bagus, and Dyah Ari Wulandari	
Impact of Climate Change on Dam Safety	157
Heri Sulistiyono, Ery Setiawan, and Humairo Saidah	
Assessment, Protection, Maintenance, Repair, and Retrofitting of Buildings and Infrastructures	
Investigating Materials for Refurbishment Strategies of Heritage Buildings: A Case Study of Soesman Kantoor, Semarang	169
Ferry Hermawan, Didi Wibowo Tjokro Winoto, Ismiyati, Bambang Purwanggono, and Robby Soetanto	
Self-monitoring and Localization of Crack of Concrete Beam with Fibers and Carbon Black Subjected to Bending	179
Genjin Liu and Yining Ding	
Seismic Performance Analysis of Multi-story Buildings with Addition of Bracing Based on SNI 1726: 2019 (Case Study: Airlangga University Parking Building)	189
Krisnamurti, Willy Kriswardhana, and Achmad Wahyu Ramadiyan	
Various Strut—Macro Modelings for Infilled Frame Analysis	199
Isyana Ratna Hapsari, Marwahyudi, Edy Purwanto, Senot Sangadji, and Stefanus Adi Kristiawan	
Strengthening of Non-engineered Building Beam-Column Joint to Increase Seismic Performance with Variation of Steel Plate Width	215
Edy Purwanto, P. Amarta Adri, S. A. Kristiawan, Senot Sangadji, and S. Halwan Alfisa	

A Proposed Method of FRP Anchorage for FRP Confined Over-Reinforced Concrete Beam 225
Nuroji, Ay Lie Han, Sri Tudjono, Lena Tri Lestari, and Tiara Murtisari

Experimental Investigation on the Shear Behavior of Patched RC Beams Without Web Reinforcements: Efficacy of Patching Position with Respect to the Shear Span 233
Adji P. Abrian, Stefanus A. Kristiawan, Halwan A. Saifullah, P. Muhammad Rafi, R. Muhammad Hafizh, Andreas M. Simanjuntak, and D. Abel Bismo

Secondary AE Analysis of Pre-corroded Concrete Beam 243
Ahmad Zaki and Zainah Ibrahim

Cable Force Prediction Technique Using Subspace and Effective Vibration Length Method 257
Muhammad Ibnu Syamsi, Hao-Lin Wang, and Chung-Yue Wang

Implementation of Microbially Induce Calcite Precipitation (MICP) by Bacillus Subtilis and Adding Sand in Repairing Shear Strength Parameters of Peat 267
Firman Syarif and Dian M. Setiawan

Sensitivity Analysis on the Effect of Reinforcement Materials Addition for Soil Stabilization 277
Ida Agustin Nomleni, Raden Harya Dananjaya, and Yusep Muslih Purwana

Numerical Simulation of Slope Stability for Soil Embankment Reinforced with Inclined Bamboo Piles 287
Ngudiyono and Tri Sulistyowati

Analysis of Community Satisfaction Level on the Road Rehabilitation and Reconstruction Project (Learn from Palu Disasters Area) 297
Andri Irfan Rifai, Eko Prasetyo, and Rhismono

Seepage and Piping Control of Earth Fill Dam 311
Muhammad Zainal Arifin, Yusep Muslih Purwana, and Raden Harya Dananjaya

Maintenance Management of Buildings and Infrastructures

State-of-the-Art of Artificial Intelligence Methods in Structural Health Monitoring 325
I. G. E. A. Putra

Development of Preventive Maintenance Guidelines for Simple-Classification Government Buildings Based on Work Breakdown Structure Within the DKI Jakarta Provincial Government.	339
Dyah Ayu Pangastuti and Yusuf Latief	
Development of Preventive Maintenance Guidelines for Electrical Components on Government Building Based on Work Breakdown Structure	355
Azhara Yudha Pradipta, Yusuf Latief, and Rossy Armyrn Machfudiyanto	
Evaluation of the Implementation of Fire Safety Management Based on Work Breakdown Structure Affecting the Insurance Premium Costs of High-Rise Lecture Buildings	369
E. P. Mahardika, F. Muslim, Y. Latief, and P. S. Nugroho	
A Critical Review of Bridge Management System in Indonesia	381
Surya Dewi Puspitasari, Sabrina Harahap, and Pinta Astuti	
Crack and Corrosion Inspections for Coastal and Marine Concrete Infrastructure: A Review	391
Sabrina Harahap, Surya Dewi Puspitasari, and Ahmad Aki Muhaimin	
e-Peralatan System as an Equipment Management for Disaster Mitigation on Indonesia National Roads	401
Adityo Budi Utomo, P. Gitaning, and S. Tosan Kunto	
The Implementation of Functional Road Assessment on Pramuka Road Section in Klaten District	411
Amirotul Musthofiah H. Mahmudah, Syahrul Anggara Wuryatmaja, and Ary Setyawan	
The Evaluation of Irrigation Maintenance in Pacal Irrigation Area at Bojonegoro Regency, East Java	425
Mahdika Putra Nanda, Rintis Hadiani, and Antonius Suryono	
Hazard Mitigation	
Landslide Analysis Subject to Geological Uncertainty Using Monte Carlo Simulation (A Study Case in Taiwan)	437
Joni Fitra, Wen-Chao Huang, and Yusep Muslih Purwana	
The Performance of Horizontal Drain as a Landslide Mitigation Strategy	449
Putu Tantri K. Sari	
The Analysis of Impact and Mitigation of Landslides Using Analytical Hierarchy Process (AHP) Method	457
A. Andriani, B. M. Adji, and S. Ramadhani	

The Stability of a Slope on Soft Soil Using the Hardening Soil Model 467
 Yerry Kahaditu Firmansyah and Maharani Putri Dewanty

Software Performance of Risk-Targeted Maximum Considered Earthquake (MCE_R) Calculation 479
 Windu Partono

Seismic Microzonation of Yogyakarta Province Based on 2019 Risk-Targeted Maximum Considered Earthquake 489
 Windu Partono, Ramli Nazir, Frida Kistiani, and Undayani Cita Sari

Liquefaction Potential of Volcanic Deposits During Lombok Earthquake in 2018 499
 Muhajirah

Fault Structure Interpretation on the Western Part of East Java Using Second Vertical Derivative 511
 Wien Lestari, Amien Widodo, Dwa Desa Warnana, Firman Syaifuddin, Rusba Saputra Rivensky, and Bagoes Idcha Mawardi

Lesson Learned from Weathering Clay Shale Residual Interface Shear Strength Testing Method 523
 Fathiyah Hakim Sagitaningrum, Samira Albati Kamaruddin, Ramli Nazir, Budi Susilo Soepandji, and Idrus M. Alatas

Shear Strain Evaluation on Analysis of Additional Clay Liner Layer Modeling in Ngipik Landfill, Gresik 533
 Siti Nurlita Fitri

Tsunami Hazard in Cilacap City Due to the Megathrust of West-Central Java Segment 543
 Wahyu Widiyanto and Sanidhya Nika Purnomo

Assessment of the Conditioning Factor for Flash Flood Susceptibility Potential Based on Bivariate Statistical Approach in the Wonobojo Watershed in East Java, Indonesia 553
 Entin Hidayah, Gusfan Halik, and Wiwik Yunarni Widiarti

Flood Management Strategies in Indonesia: A Lesson Learned from Pepe River, Central Java 575
 Rian Mantasa Salve Prastica and Amalia Wijayanti

Comparison of Suitable Drought Indices for Over West Nusa Tenggara 587
 Humairo Saidah, Heri Sulistiyono, and I Dewa Gede Jaya Negara

Small Debris Flow Simulation Using MORPHO2DH 601
 Puji Harsanto, Dandy Darwin Septiandy, Berli Paripurna Kamiel, and Nursetiawan

Simulation of Debris Flow Using “SIMLAR” in the Watershed of Gendol River, Indonesia 609
 Hendy Dwi Cahyo, Jazaul Ikhsan, and Ani Hairani

Wind-Generated Wave Simulation on Payangan Beach Utilizing DELFT3D 619
 Enggar Setia Baresi, Retno Utami Agung Wiyono, and Wiwik Yunarni Widiarti

Risk Reduction and Safety Management

Incorporating Cultural Attributes into Disaster Risk Reduction-Based Development Plans in Indonesia 631
 Yusron Saadi

Identification Risk Potential Hazard of Railway Project Based on the Work Breakdown Structure to Improve Safety Performance 641
 D. V. Aryanto, L. S. Riantini, R. A. Machfudiyanto, and Y. Latief

Identification Factors of Safety Climate, Awareness, and Behaviors to Improve Safety Performance in Telecommunication Tower Construction at PT X 651
 B. F. Athaya, L. S. Riantini, and R. A. Machfudiyanto

Cost Structure of Construction Safety on High Residential Buildings in Indonesia 659
 Ratih Fitriani, Yusuf Latief, and Rossy A. Machfudiyanto

Adaptive Traffic Signal Control Using Fuzzy Logic Under Mixed Traffic Conditions 669
 Budi Yulianto

Application of Fuzzy Inference System Mamdani at Pelican Crossing 681
 Salsabila Naura Putri

Determining the Maximum Speed Limit in Residential Area 693
 Gito Sugiyanto, Fadli Wirawan, Eva Wahyu Indriyati, Yanto, and Mina Yumei Santi

Identification of Traffic Accident Hazardous Location and Cost of Accidents in Developing Country (Case Study of Tabanan Regency, Bali-Indonesia) 705
 Putu Alit Suthanaya and Made Oka Sugiana

Characteristics of Foreign Motorcyclists in Tourism Areas in Bali 717
 Cokorda Putra Wirasutama, Putu Alit Suthanaya, Dewa Made Priyantha Wedagama, and Anak Agung Gde Agung Yana

Analysis of the Behaviour Model of Foreign Motorcyclists in Tourism Areas in Bali 729
 Cokorda Putra Wirasutama, Putu Alit Suthanaya,
 Dewa Made Priyantha Wedagama, and Anak Agung Gde Agung Yana

Knowledge and Practice of Helmet Usage Among Senior High School Students in Klaten Regency 743
 Dewi Handayani, Putri Dewi Prasetianingrum,
 and H. M. Amirotul Musthofiah

Sustainability Aspects in Transportation Engineering

Investigation of CO₂ Emissions on Two Local Streets by Means of IPCC and Direct Method 753
 Florentina Pungky Pramesti, Annisa Tri Utami, Iva Yenis Septiariva,
 and Fajar Sri Handayani

Reducing the Release of Greenhouse Gases in the Rigid Pavement Material Transportation Process Unit 763
 Fajar Sri Handayani, Florentina Pungky Pramesty, and Ary Setyawan

Cost Effectiveness Analysis of Greenhouse Gas Emissions Reduction in the Flexible Pavement Material Transportation Process Unit 771
 Fajar Sri Handayani, Florentina Pungky Pramesti, and Ary Setyawan

A Probabilistic Model of Container Port Demand in Java Concerning the Port Hinterland Connectivity 781
 Lydia Novitriana Nur Hidayati, Gerard de Jong, Anthony Whiteing,
 and Munajat Tri Nugroho

Evaluation of Logistics System Performance-Based on Indonesian Government Policy 791
 Muhammad Rizky Prakoso, Mohammed Ali Berawi, and Gunawan

Analysis of the Influence of Region Development Factors, Individual and Activity, Internal Operator and External Operator on the Demand for the Jakarta Bandung High-Speed Rail 799
 Samijan, Mohammed Ali Berawi, and Andyka Kusuma

Investigating the Factors Influencing the Demand of School Bus 811
 Willy Kriswardhana, Syamsul Arifin, and Ainal Akbar

Sustainability Aspects in Construction Projects

Key Performance Indicator for Analytical Hierarchy Process Used for Determining the Effect of Reverse Supply Chain Toward Green Building Projects 823
 Hermawan, Jati Utomo Dwi Hatmoko, and Jovana Neilkelvin

Development of Blockchain and Machine Learning System in the Process of Construction Planning Method of the Smart Building to Save Cost and Time 833
 Christiantono Tedjo, Mohammed Ali Berawi, and Mustika Sari

The Development of Blockchain Based Knowledge Management System Model at EPC Projects to Improve Project Time Performance 843
 D. Y. Priyambodo, M. A. Berawi, and M. Sari

Risk Allocation Implementation Analysis of Public-Private Partnership for Infrastructure Project (Case Study of the Solo-Yogyakarta-NYIA Kulon Progo Highway Project) 853
 Widi Hartono, Aloysia Putri Hastari Purnomo, and Sunarmasto

Risk Assessment of Construction Project Scheduling 863
 Zetta Rasullia Kamandang

Investigating Construction Project Delay Using Fault Tree Analysis Based on Its Dominant Risk on Private Project 873
 Jojok Widodo Soetjpto, Amalia Martha Sukmana, and Syamsul Arifin

Implementing a Relational Database in Processing Construction Project Documents 891
 Mik Wanul Khosiin and Ardian Umam

Evaluation of the Public Procurement Principles Implementation in Surabaya Construction Projects 901
 Patrisius Valdoni Sandi and Mohammad Arif Rohman

Relationship Model Between Conceptual Cost Estimation Process of Flyover Development in the Provincial Government of DKI Jakarta with the Accuracy Level 913
 Putika Yussi, Yusuf Latief, and Rossy Armyn Machfudiyanto

The Sustainability Aspect of the Consulting Firm in Terms of Its Competitiveness in Indonesia 933
 Nofita Harwin, Mairizal, Zelmi Sriyolja, Abd Rahman Mohd Sam, and Mohd Zaimi Abd Majid

Sustainability Aspects in Water Resources Management

Sustainability Analysis of Minimization of Spills from a Reservoir 945
 Syamsul Hidayat, Ery Setiawan, Ida Bagus Giri Putra, M. Bagus Budiarto, and Salehudin

Infiltration Wells as an Alternative Eco Drainage System a Case Study in Mangkubumen Surakarta 953
 Retnayu Molya, R. R. Rintis Hadiani, and Adi Yusuf Muttaqien

Analysis of Leb Irrigation Patterns of Pipe System in Sorghum Plants in Sand Dry Lands Akar Akar Village. 965
 I Dewa Gede Jaya Negara, Sasmito Soekarno, Suwardji, Humairo Saidah, and Atha Adi

Hourly Rainfall Simulation Using Daily Data. 975
 Suroso, Fatimatus Sholihah Marush, Purwanto Bekti Santoso, Irfan Sudono, Edvin Aldrian, and Nelly Florida Riama

Water Quality Mapping on the Coast of Bangkalan Madura Based on the Acidity Value from Aqua MODIS Satellite Imagery 989
 Hendrata Wibisana, Zetta Rasullia Kamandang, and Kartini

Multi-attribute Analysis of Raw Water Treatment from Deep Wells at PDAM Tirta Mahottama, Klungkung Regency, Bali 999
 Ni Kadek Dian Utami Kartini, Nurulbaiti Listyendah Zahra, Ariyanti Sarwono, Intan Rahmalia, Almira Davina Nastiti, Iva Yenis Septiariva, and I. Wayan Koko Suryawan

Determination of Produced Wastewater Treatment Systems for Reclaim Water in the Oil and Gas Industry. 1009
 Novena Lany Pangestu, Nurulbaiti Listyendah Zahra, Ariyanti Sarwono, Intan Rahmalia, Iva Yenis Septiariva, and I. Wayan Koko Suryawan

Preference of Sludge Treatment Plan in IPA II Pejompongan Water Treatment Plant 1019
 Nailatul Fadhilah, Nurulbaiti Listyendah Zahra, Fatimah Dinan Qonitan, Imroatus Sholikhah, Intan Rahmalia, Iva Yenis Septiariva, and I. Wayan Koko Suryawan

Design of Typical Rainwater Harvesting Storage Tanks Based on Housing Type (Case Study in Indonesia) 1029
 Lina Indawati, Setyo Budi Kurniawan, Siti Rozaimah Sheikh Abdullah, and Raden Harya Dananjaya

Risk Analysis of Shared Marine Space in the View of Traditional Fishermen Perceptions in the National Tourism Strategic Area of Lombok, Indonesia 1043
 Ida Ayu Oka Suwati Sideman, R. M. Nyoman Budiarta, Ida Bagus Putu Adnyana, and Ngakan Ketut Acwin Dwijendra

Construction Materials for Sustainable Infrastructures

Residual Stress Evaluation on Cold-Formed Steel C-Section by X-Ray Diffraction 1057
 T. Widya Swastika, Heru Purnomo, M. R. Muslih, R. Apriansyah, Henki W. Ashadi, and Mulia Orientilize

Mechanical Properties of Fine-Grained Concrete Using Fine-Red Sand and Fly Ash for Road Construction: A Case Study in Vietnam 1067
 Nguyen Thanh Sang, Thai Minh Quan, May Huu Nguyen, and Lanh Si Ho

A Systematic Review of Concrete Material for Noise Reduction of Transportation Sectors 1077
 Ecky Ferry Ferdyan, Dewi Handayani, Sholihin As’ad, and Ubaidillah

Mapping Literature of Reclaimed Asphalt Pavement Using Bibliometric Analysis by VOSviewer 1085
 Mochammad Qomaruddin, Han Ay Lie, Widayat, Bagus Hario Setiadji, and Mochamad Agung Wibowo

Literature Study: Alternative Materials for Hot Rolled Sheet-Wearing Course (HRS-WC) Pavement 1095
 Elsa Eka Putri, Purnawan, Bayu Martanto Adji, and Bobby Herman

Marshall Characteristics of Asphalt Mixture with Water Hyacinth Ash as Filler 1109
 Dony Rohmad Dony, Bagus Hario Setiadji, and Bambang Riyanto

The Setting Time of Portland Composite Cement Mixed with Calcium Stearate 1119
 A. Maryoto, P. Hardini, and R. Setijadi

Evaluation of Silt Content in Natural Sand Used as Building Materials: A Statistical Analysis Approach 1133
 Jauhar Fajrin, Mulyadi, Hariyadi, and Agung Prabowo

Compressive and Flexural Strength Behavior of Banana Tree Fiber Hybrid Concrete 1143
 Fadillawaty Saleh, Fanny Monika, Hakas Prayuda, Bella Lutfiani Al Zakina, Martyana Dwi Cahyati, Adira Aldi, and Feri Adri Wibowo

Investigation of Polypropylene Fiber Reinforced Concrete After Elevated Temperature Using Color Quantification and Alkalinity Method 1153
 Ni Nyoman Kencanawati, Suryawan Murtiadi, and Zul Aida Nur

The Effect of 12.5% Metakaolin and Variations of Silica Fume on Split Tensile Strength and Modulus of Rupture of High Strength Self-Compacting Concrete (HSSCC) 1165
 Endah Safitri, Wibowo, Halwan Alfisa Saifullah, and Farhan Gilang Septian

**The Strength and Modulus of Elasticity of High Strength
Self-compacting Concrete (HSSCC) with 12.5% Metakaolin and
Variations of Silica Fume 1173**
Endah Safitri, Wibowo, Halwan Alfisa Saifullah,
and Fernanda Sarwatatwadhika Perdana

Numerical Simulation of Slope Stability for Soil Embankment Reinforced with Inclined Bamboo Piles



Ngudiyono and Tri Sulistyowati

Abstract Slope stability is an important parameter when designing for the embankment. Poor-quality and degradation properties of soil material became triggers slope failure. Bamboo culm (*Dendrocalamus asper*) provided a diameter of 6–15 cm and high tensile strength parallel to the grain, and it was suitable for slope stabilizing. Slope stabilization by bamboo pile is a passive technique in which soil displacements require to activate pile forces. In this manuscript, two-dimensional (2D) model slope reinforcement with bamboo pile with the shear strength reduction (SSR) finite element method (FEM) by using ABAQUS SE software has simulated. The bamboo piles with 5 m length and 6 cm, 10 cm, 15 cm for diameter were placed two in the edge, one in the middle, and inserted perpendicular to slope plane embankment with the inclination of 33.69°. The model of the slope was analyzed, its influence on bamboo piles soil interaction by evaluating the safety factor (FOS). The result has shown that reinforced embankment slope with inclined bamboo piles had increased slope stability, the safety of factor (FOS) increase to 1.515. The shear strength reduction (SSR) finite element method (FEM) can be used as an alternative for slope stability analysis.

Keywords Slope stability · SSR · FEM · Reinforcement · Bamboo pile

1 Introduction

Slope stability is an important parameter when designing embankment roads, highways, dams, and other civil engineering structures. The problem of poor-quality soil material and degradation properties of soil material became sometimes triggers slope failure. Several slope reinforcement techniques widely applied are geosynthetic, soil

Ngudiyono (✉) · T. Sulistyowati
Department of Civil Engineering, University of Mataram, Mataram, Indonesia
e-mail: ngudiyono@unram.ac.id

T. Sulistyowati
e-mail: trisulisyowati@unram.ac.id

nailing, concrete or steel mini-pile, concrete block, etc. The technologies that require skilled labor are relatively expensive.

Bamboo is a natural material widely available globally, especially in Asia, and has been widely used as a traditional and modern building material. Bamboo also green building material, renewable, sustainable, typically be harvested in less than three years to four years, and relatively inexpensive. Bamboo culm (*Dendrocalamus asper*) provided with diameter 6–15 cm, tensile strength parallel to grain 228 MPa, flexural strength 134.97 MPa, and modulus of elasticity 12,888.48 MPa [1, 2] that make it suitable for slope stabilizing. Bamboo piles inserted in a soil mass can provide stability by adding the reactive portion to the resistant forces contrary to the ground. Slope stabilization by bamboo pile is a passive technique in which soil displacements require to activate pile forces [3, 4].

Using bamboo piles as material for reinforcement of slope sandy soil was carried out by Munawiret al. [5, 6]; the result of the experiment and numerical by using PLAXIS showed that pile reinforcement applied on the slope had improved the stability of the slope. It had indicated by the significant increase of safety factor and bearing capacity. Wahhab and Ramadhan were used bamboo as soil reinforcement to landslide in Kali Wungu–Boja road, Darupono Village, Kendal District, two varieties of bamboos with a diameter of 20 and 15 cm were analyzed. The safety factor was analyzed by using PLAXIS and SLOPE/W software. The result showed that of safety factor was give the illustration that bamboo could use as an alternative material to slope reinforcement [7]. Using the *Dendrocalamus Giganteus* species bamboo-pile for slope stability using the finite element method (FEM) analysis of bamboo-pile was developed PLAXIS software for 2D and 3D. The results presented that the capabilities of the bamboo piles are potential as an alternative for slope stability [8].

Generally, there are two methods for slope stability analysis, including limit equilibrium methods (LE), such as Ordinary, Bishop's, Janbu's, Spencer's, Morgenstern-Price, and numerical analysis methods such as finite element method (FEM). In the LE method for slope stability analysis, the critical slip surface has to be estimated. However, in FEM analysis, no potential slip surface was estimated in advance, and the stress–strain correlation in the slope can also be considered [8]. In this study, two-dimensional (2D) analyses evaluated bamboo piles using ABAQUS Student Edition (SE) software to simulate the slope model. The software is a personal finite element analysis tool for solving limited size problems (1000 nodes for Abaqus/Standard and Abaqus/Explicit). This numerical study aims to analyze the performance of the slope reinforced with inclined bamboo piles as an alternative material used in slope reinforcement. The variation of diameter bamboo piles was modeled to evaluate the influence of inclined bamboo piles on the safety factor (FOS).

2 Shear Strength Reduction (SSR) Finite Element Method (FEM)

Nowadays, shear strength reduction (SSR) has increasingly been used with the finite element method (FEM) for slope stability analyses. Previous researchers have widely used this method to analyze the slope stability of several cases [8–13].

In the SSR finite element method elastic–plastic strength is assumed for slope materials. The factor of safety (FOS) is applied to reduce the strength of soil until failure occurs. For Mohr–Coulomb material model shear strength reduced by a factor of safety can be determined from the equation below.

$$\frac{\tau}{FOS} = \frac{c'}{FOS} + \frac{\tan \phi'}{FOS} \tag{1}$$

Equation (1) can be re-written as,

$$\frac{\tau}{FS} = c^* + \tan \phi^* \tag{2}$$

where

$$c^* = \frac{c'}{FOS} \tag{3}$$

$$\phi^* = \arctan\left(\frac{\tan \phi'}{FOS}\right) \tag{4}$$

Equations (3) and (4) are reduced Mohr–Coulomb shear strength parameters, and these values can be input into the ABAQUS SE software and then analyzed. There are several types of criteria for determining the failure slope model: numerical iteration non-convergence, suddenly change displacement, plastic strain, or equivalent plastic strain [8–13].

In the computation process, the field variables change following increment step time. The process of reducing material strength be realized by adjusting the material parameters to change with field variables. Since the incremental time change is automatic and manual modification is no longer required, the strength is also automatically decreased. Eventually, according to specific failure criteria, a suitable increment step time is known. Then the safety of the factor and the critical sliding surface of the slope can be found.

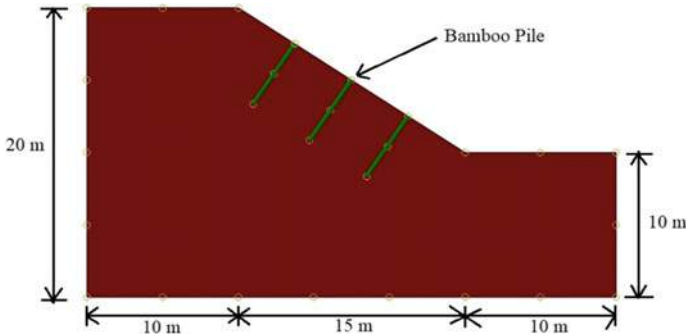


Fig. 1 The geometry of the slope model

3 Numerical Simulation

In the section describing step by step finite element analysis for slope model embankment reinforced with inclined bamboo piles using ABAQUS SE software, including model geometry, material properties, meshing, boundary condition, and loading as follows:

3.1 Model Geometry

According to the previous study [14], the geometry of the homogeneous embankment slope model was typically 20 m in height and 35 m long at the base with an inclination of 33.69° . The bamboo pile with 5 m length and 6, 10, 15 cm for diameter were placed two in the edge, one in the middle, and inserted perpendicular to the slope model plane. The geometry slope reinforced with bamboo piles is shown in Fig. 1.

3.2 Material Properties

The soil material properties of slope based previous study [14], the elastic–plastic Mohr–Coulomb failure criterion is used in the constitutive model of the soil in the analyses. Because clay assumed to be undrained, so the modulus of elasticity (E), Poisson’s ratio (ν), cohesion (c), friction angle (ϕ), and unit weight (γ) are 200 MPa, 0.25, 10° , 20 kPa, and 20 kN/m^3 respectively. In contrast the dilation angle (ψ) assumed zero because of the saturated clay. Meanwhile, the properties of the bamboo piles species *Dendrocalamus asper* are 5 m for length and 6, 10, 15 cm for diameter with the modulus of elasticity (E) 12,000 MPa and Poisson’s ratio (ν) 0.2.

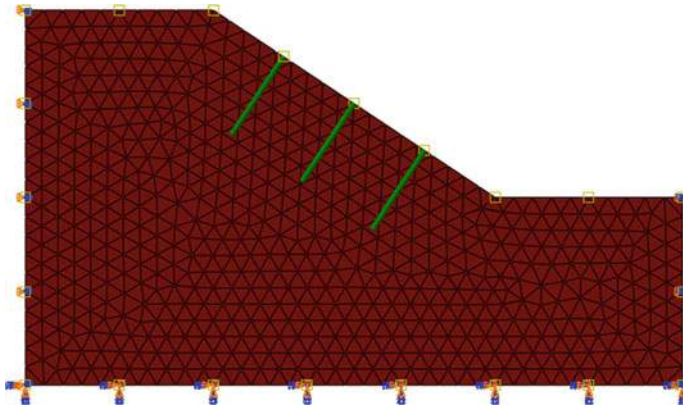


Fig. 2 Meshing and boundary condition of the slope model

3.3 Meshing, Boundary Condition, and Loading

Because the ABAQUS SE has having limitations, the 2D FEM technique has been adopted to solve the slope model in this study. There are 1185 element type CPE3 (3-node linear plane strain triangle) used for soil and type B21 (2-node linear beam in a plane) for the bamboo pile. The bamboo piles are assumed as an embedded elements beam in a set of solid elements. The boundary conditions (BC) on both sides are assigned to be roller which deformation on x-direction, and the fixed is used for the bottom. The meshing and BC of the model are shown in Fig. 2. Only the gravity load was applied in the slope model.

4 Result and Discussion

4.1 The Safety of Factor (FOS)

The slope stability analyses based on SSR using ABAQUS SE software, the factor of safety (FOS) has evaluated base criteria non-convergence of the numerical iteration, suddenly change the displacement node control on the top slope model. The displacement of the versus FOS has shown in Fig. 3. It illustrated that the displacement changes suddenly at $FOS = 1.293$ for clay embankment slope unreinforced. Meanwhile, the clay embankment slope reinforced inclined bamboo piles with diameters of 6, 10, 15 cm increase 1.503, 1.512, 1.515, respectively. The main principle of reinforcement in slopes is to provide stabilizing forces. When bamboo piles are inserted in the slope, additional pullout resistances are provided, so this structure changes safety of factor. The simulation results also indicate that the safety factor depends on the diameter of bamboo piles. With the larger diameter of bamboo piles, the pullout resistance was increased.

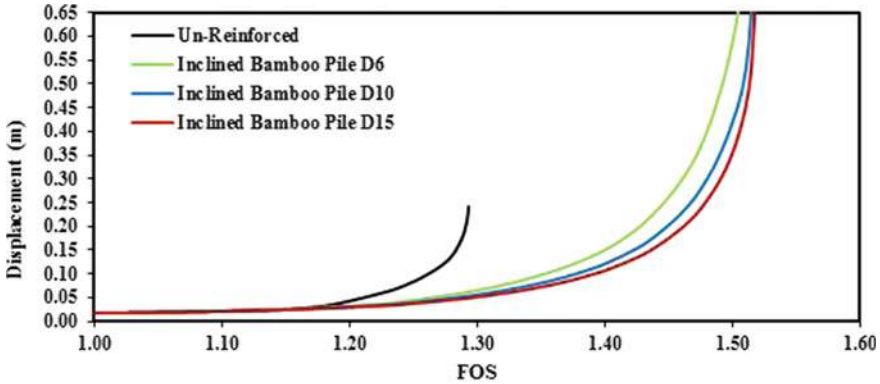


Fig. 3 Displacement versus FOS of the slope model

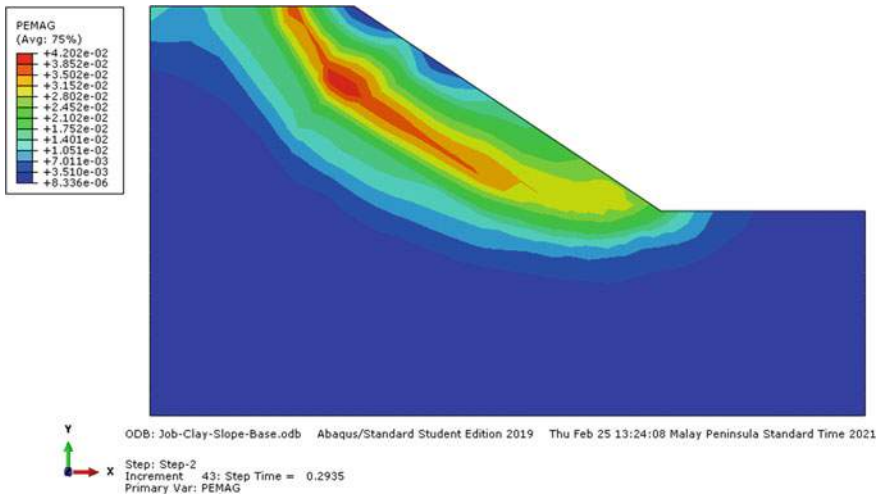


Fig. 4 The equivalent plastic strain (PEMAG) slope model unreinforced

4.2 The Equivalent Plastic Strain (PEMAG)

The bamboo piles are inserted in the slope, and it also changes the stress–strain and failure mechanism. Figure 4 until Fig. 7 shows the equivalent plastic strain (PEMAG) at increment 43rd for unreinforced and 158th for reinforced slope. In the figures, the contour indicates the location of the potential failure of the slope. The different contours shown in the figures indicate the location where the slope failure started (Figs. 5, 6 and 7).

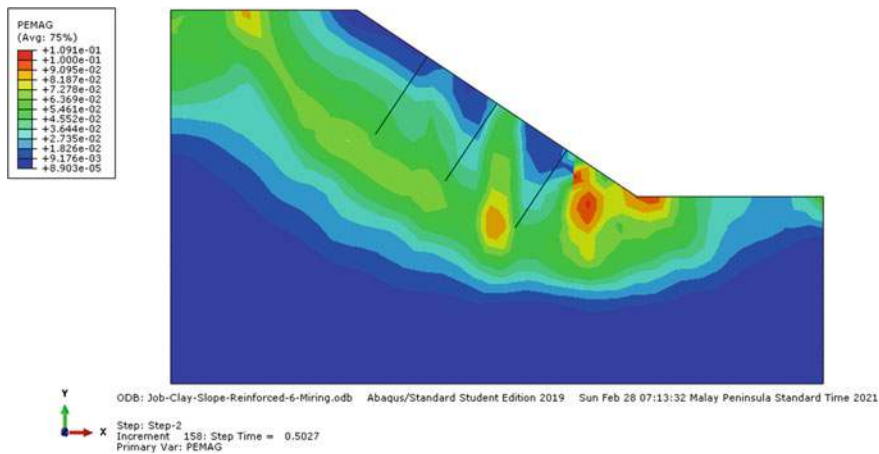


Fig. 5 The equivalent plastic strain (PEMAG) slope model reinforced with inclined bamboo piles diameter 6 cm

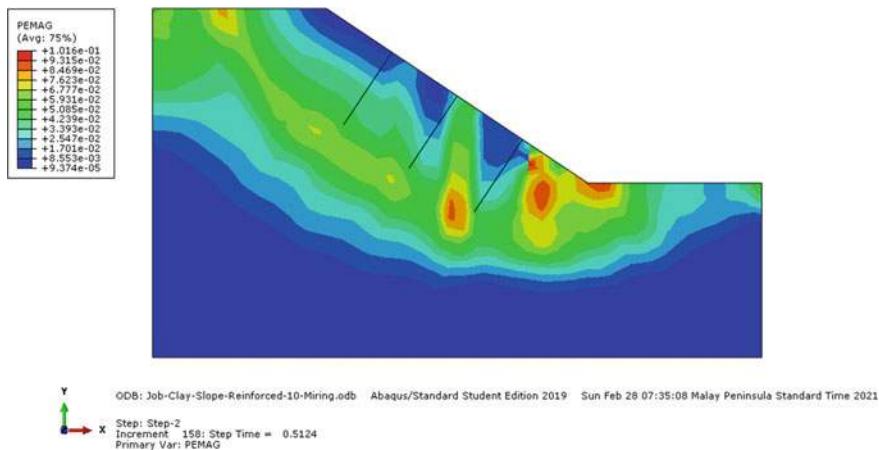


Fig. 6 The equivalent plastic strain (PEMAG) slope model reinforced with inclined bamboo piles diameter 10 cm

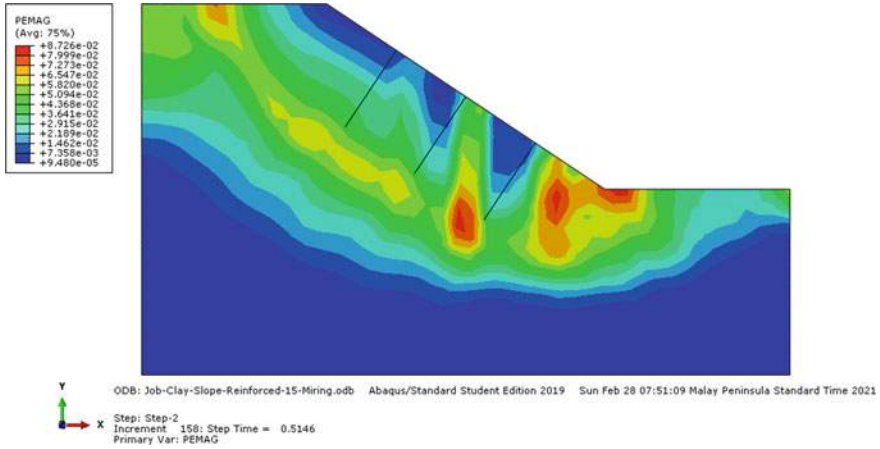


Fig. 7 The equivalent plastic strain (PEMAG) slope model reinforced with inclined bamboo piles diameter 15 cm

5 Conclusion

According to the 2D FEM simulation of soil embankment slope reinforced with inclined bamboo piles with the shear strength reduction (SSR) using ABAQUS SE software, the factor of safety (FOS), and the failure mechanism of the slope were obtained as follow:

1. The factor of safety (FOS) of the slope depends on the diameter of bamboo piles. The clay embankment slope reinforced with inclined bamboo piles with diameter 6, 10, 15 cm increase 1.503, 1.512, 1.515, respectively.
2. When the bamboo piles were inserted in the slope, it also changes the stress–strain and failure mechanism. The equivalent plastic strain (PEMAG) contour indicates the location of the potential failure of the slope.
3. The shear strength reduction (SSR) finite element method (FEM) can be used as an alternative for slope stability analysis of soil embankment slope model reinforced with inclined bamboo piles.

References

1. Morisco (1999) *Rekayasa Bambu*, Nafiri Offset, Yogyakarta
2. Irawati IS, Saputra A (2012) Analisis Statistik Sifat Mekanik Bambu Petung. *Proceeding Simposium Sinar Bambu I*, Yogyakarta
3. Kumar P, Chakraborty P (2018) A simple analytical model for bamboo reinforced slope using ordinary method of slices. *Ind Geotech Conf*
4. Davila AMJ (2019) *Numerical Analysis of Bamboo Piles for Slope Stability*, Geotechnical Engineering in the XXI Century. Pontificia Universidade Católica do Rio de PUC-Rio. Brazil

5. Munawir A, Dewi M, Zaika Y, Soehardjono A (2013) Bearing capacity on slope modeling with composite bamboo pile reinforcement. *Int J Eng Adv Technol (IJEAT)* 2(5)
6. Munawir A, Dewi M, Zaika Y, Soehardjono A (2013) Safety factor of continuous footing on slope modeling with composite bamboo pile reinforcement. *EJGE* 18
7. Wahhab MA, Ramadhan MR (2017) Analysis of slope stability using bamboo as an alternative slope reinforcement (Case Study In Kaliwungu—Boja Street, Darupono Village, Kendal District). In: *Proceedings of international conference: problem, solution and development of coastal and delta areas*. Semarang, Indonesia
8. Ho IH (2014) Parametric studies of slope stability analyses using three-dimensional finite element technique: geometric effect. *J GeoEng* 1:33–43
9. Dawson EM, Roth WH, Drescher A (1999) Slope stability analysis by strength reduction. *Geotechnique* 49(6):835–840
10. Griffiths DV, Lane PA (1999) Slope stability analysis by finite elements. *Geotechnique* 49(3):387–403
11. Yang X, Yang G, Yu T (2012) Comparison of strength reduction method for slope stability analysis based on ABAQUS FEM and FLAC. *Appl Mech Mater* 170–173:918–922
12. Dai w, Jiang P, Ding J, Fu B (2017) The influence of strength reduction method on slope stability under different instability criteria. *Int Conf Arch Eng New Mater*
13. Peng X, Li J, Li Y, Jiang Y (2020) Slope instability judgment criteria in FEM based on strength reduction method. *IOP Conf Ser: Earth Environ Sci* 571
14. Cai F, Ugai K (2000) Numerical analysis of the stability of a slope reinforced with piles. *Soil Found* 40(1):73–84