

coresponden

I am very interested in and trust the quality of The Nongye Jixie Xuebao/Transactions of the Chinese Society of Agricultural Machinery. Therefore, I propose that our manuscript entitled "SURPLUS PRODUCER AS A MEASURE OF HOUSEHOLD WELFARE LEVELS IN RICE CROPS: A CASE STUDY OF RICE CULTIVATION IN LOW AND MEDIUM LANDS" is accepted for publication. We are willing to comply with all the terms and conditions that apply to the Nongye Jixie Xuebao.

Thank You,

Suparmin Jinem

Manuscript:

**SURPLUS PRODUCER AS A MEASURE OF HOUSEHOLD WELFARE
LEVELS IN RICE CROPS: A CASE STUDY OF RICE CULTIVATION IN
LOW AND MEDIUM LANDS**

Suparmin Jinem¹, Tajidan Tajidan²

¹Faculty of Agriculture University of Mataram

²Agribusiness in Magister Study Program, University of Mataram

Correspondent email: suparminjinem@gmail.com

Abstract

The objective of the study is to find the appropriate surplus producer analysis model to measure farmer family welfare levels in paddy rice fields in the low and medium land. The study implemented in Indonesia with lead location of low and medium lands of rice fields on the island of Lombok. low land rice fields are represented in Kediri district while medium lands rice fields are represented in the Narmada district. In each district, it has been chosen 30 rice farming units, then the number of sampling units were 60 rice farming units rice field. Data was collected were using observation, survey, and interview where the respondent are farmers of paddy rice field. Data analyzed using improvement profit function to become surplus producer function. This study showed that the appropriate model of analysis of the surplus of the producer as measurement level family well-being farmer paddy rice field is $\frac{1}{2} \int (P - MC) * Q$. This model can be applied to rice paddy agriculture such as rice paddy farmer household welfare level in the low land higher than in the middle land.

Keywords: household, rice, farmers, agriculture

INTRODUCTION

The decline in the area of agricultural land in Indonesia continues to this day, including in West Lombok Regency. This is as a result of ongoing industrial and housing development on a large scale. Ironically, the development uses productive agricultural lands. While productive agricultural land is very useful for the provision of food for regional and national residents. [1] stated that as reported by the Food and Agriculture Organization of the United Nations, in 2050 it is estimated that there will be an increase of 70 percent of global food needs. The first impact felt from the conversion of agricultural land into industrial land is reduced food production. Land conversion will make paddy fields and other agricultural land narrower, automatically agricultural land will become narrower. According to [2] conversion of agricultural land can reduce rice production by 12.276 tons/ha/year in Majalengka Regency, West Java. So, the development considerations for the industrial and housing sectors should use non-productive land and maintain productive land. Therefore, consideration of the adjustment of agricultural land for agricultural production in the future is important. The suitability factor of agricultural land both for the suitability of various rice varieties and altitude needs to be considered by farmers. According to [3] that land suitability is the suitability of a land for a particular use, for example land suitable for irrigated land, ponds, annual crop farming or seasonal crop farming. Thus, land suitability for food crops needs information support.

Each plant has the ability to grow and adapt to the environment in which it is planted, including the altitude where it is cultivated. Although rice planting must be adjusted to the suitability of the planting site, the rice planting location must be able to produce high rice production. [4] classifies the altitude for agriculture into four classes, namely <100 m, 100 – 200 m, 200 – 800 m, and > 800 m. Meanwhile, according to [5] that the topography of West Lombok Regency based on altitude is divided into four, namely (0-100 m) covering an area of 34,800 ha, (100-500 m) covering an area of 40,966 ha, (500-1000 m) covering an area of 8,650 Ha, and > 1000 m area of 885 Ha. The data shows that the area of agricultural land in the lowland areas still dominates, especially in the high-altitude areas (0-100 m) and (100 - 500 m) above sea level.

Land use that pays little attention to land suitability class, agro-ecology, and planting height tends to produce less optimal agricultural business and will even bring losses to farmers because it will use very large production factors to increase soil fertility. In line with the opinion [7] which states that the productivity of food crops depends on the quality of the land used. If the selection of land at the beginning of development does not select productive areas, then considerable (financial) losses will occur later. Therefore, the evaluation of land suitability can answer the level of land suitability for the development of a commodity and economically it will answer the feasibility of farming.

Besides the suitability of agricultural land, pre-harvest and post-harvest issues of paddy rice also need attention. In the pre-harvest or rice production period, farmers are faced with seed problems (high-yielding varieties). The price of superior rice seeds makes it difficult for farmers to meet production targets. Because with superior rice varieties will produce high rice productivity. This

rice seed problem can be overcome through the implementation of a price subsidy policy for certified rice seeds. [8] The government cooperates with state-owned enterprises and local breeders in each region in procuring and supplying subsidized certified rice seeds. The indicator of success in this program is the provision, sale and distribution of subsidized rice seeds to farmers or farmer groups. Likewise said [9] that producing superior varieties and distributing them to farmers requires an efficient and effective formal seed system in order to obtain optimal benefits. Another policy during the pre-harvest period carried out by the government is the fertilizer subsidy policy. Provision of balanced fertilizer on rice plants will provide high production yields. [10] government through the Ministry of Trade no. 4 of 2023 has stipulated the procurement and distribution of subsidized fertilizers for the agricultural sector. According to [11] the implementation of the distribution of fertilizers to farmers as a whole is quite effective and efficient, but sometimes the quantity and price are not right and the flow does not comply with the official provisions set by the government.

The problem during the post-harvest period of rice is that in general the facilities owned by farmers in grain management are still inadequate, such as not having a drying floor and not having grain storage warehouses. This will impact marketing, revenue, and profits for lowland rice farmers. [12] states that in general farmers have characteristics in marketing the results where the bargaining position of rice farmers tends to be weak. The failure of the local grain market is a strong reason for the need for government intervention in the grain and rice market. [13] stated that the government is very interested in controlling for farmers the stability of rice supply and prices through grain or rice policies both protective and promotive in nature, all of which have a direct or indirect impact on the welfare of farmers. Therefore, the government has provided support for grain prices or the basic price of grain for farmers every year so that the price of grain received by farmers is not too low.

From the various problems faced by farmers and the implementation of various government policies both during the pre-harvest and post-harvest periods, it will be able to have an impact on the income and welfare that farmers expect. [15] stated that the welfare of farmers will be achieved if each farmer can meet the desired rice price target, which can be seen in the desired farmer's net income. Unfortunately, the price of unhusked rice (paddy) which is desired to meet the welfare of farmers cannot be separated from the "forces" that play in various fields. This is a big problem for farmers because a weak bargaining position makes farmers unable to receive prices that are in line with expectations, which can threaten farmers' income and farmers' welfare. The problem that arises is whether the suitability of the height of the rice planting area (low and medium land) in West Lombok Regency will result in production, profit, and producer surplus (welfare) for farmers from different lowland rice farming. Therefore, it is necessary to conduct a study on: Producer Surplus as a Measuring Level of Welfare of Paddy Rice Farming Households: Learning from the Case of Rice Farming in the Lowlands and Medium Land

The objective of this study is to find an appropriate producer surplus analysis model as a measure of the welfare level of paddy rice farming households in the lowlands and medium land. In particular, this study aims to analyze the differences in production and profit and find differences in the producer surplus of rice farming in the lowlands and medium.

RESEARCH METHOD

1. Data Collection and Sampling Areas

Data collection for this study using observation, survey, and in-depth interview methods. Observations were made through direct observation at the location of the farm and where the farmer lives. The survey was carried out by interviewing rice farmers using a list of questions, while in-depth interviews were conducted to verify the data with the documents or records of their farming. The research was carried out in West Lombok Regency by specifying two sub-districts as research locations, namely Kediri Sub-District and Narmada Sub-District with consideration of the height above sea level, namely <100 m representing lowland (Kediri Sub-District) and (100-500 m) representing medium land (Narmada Sub-District) [5] and [16]. Data collection was carried out for three months from May to July 2022

2. Units of Analysis

As the unit of analysis is paddy rice farming owned by farmers who were selected as respondents.

3. Respondent Sampling

Respondents in this study were farmers who own paddy rice farming. Determination of the number of respondents was carried out by quota sampling with a total of 60 respondents with details in each sub-district totaling 30 respondents, namely Kediri sub-district 30 respondents and Narmada sub-district 30 respondents.

4. Variables and Data Analysis

The data collected from the survey was then edited, tabulated and analyzed. The analysis model used is:

- 1) Cobb-Douglas production and profit functions. Yotopoulos and Lau (1979) in [17], and [18] state that the profit function can be derived using the Unit Output Price Cobb-Douglas Profit Function (UOP-CDPF) technique, with the assumption that producers maximize satisfaction for profits. UOP-CDPF is a function that includes production and factors of production normalized to output prices.

Cobb-Douglas Production Function with 4 independent variables, namely seed costs, fertilizer costs, labor costs and the dummy variable altitude.

$$q = \alpha X^{\beta} Z^{\gamma} \dots\dots\dots(1)$$

q = output quantity

X = quantity of the variable input

Z = quantity of the fixed input

α = intercept (constant)

β and γ = elasticity of output from input X and Z

The empirical model of the Cobb-Douglas Production Function in this analysis is shown in the following equation:

$$q_i = \alpha X_i^\beta Z_i^\gamma D_i^\phi \dots\dots\dots(2)$$

To facilitate the estimation of equation (12) and data in the production distribution and determination of the normal distribution, the equation is transformed into a linear form by making it with logarithms, then the equation becomes:

$$\ln q_i = \ln \alpha + \beta \ln X_i + \gamma \ln Z_i + \phi D_i + e_i \dots\dots\dots(3)$$

q_i = Paddy production (kg), at an altitude of < 100 m and an altitude of 100-500 m

α = constant

X_i = cost of production factors (seeds, fertilizers, labor) (Rp)

Z_i = fixed costs (Rp)

D_i = 1 for altitude (100-500 m)

0 for altitude < 100 m

2) Receiving Function

$$R = p \cdot q$$

$$R = p \cdot \int \alpha X^\beta Z^\gamma$$

3) Cost Function:

$$C(q) = vZ + wX \dots\dots\dots(4)$$

v = capital rent for fixed input

w = price of variable input

4) Profit function

$$\pi(X,Z) = pq - C(q)$$

$$= Pf(X,Z) - (\omega X) \dots\dots\dots(5)$$

π = profits

p = output price per unit

If ω = ω/p means the normalized price of the input variable, then equation (3) can be normalized with the output price so that the output price profit (UOP Profit) becomes:

$$\begin{aligned} \pi/p(X,Z) &= pq - C(q) \\ &= pf(X,Z) - (\omega/vX) \dots\dots\dots(6) \end{aligned}$$

The main requirement for maximizing profit is that the first derivative of the profit function is equal to zero:

$$\begin{aligned} \pi &= p\alpha X^\beta Z^\gamma - \omega X \\ \partial\pi/\partial X &= \beta p\alpha X^{\beta-1} Z^\gamma - \omega = 0 \dots\dots\dots(7) \end{aligned}$$

$$\beta p\alpha X^{\beta-1} Z^\gamma = \omega \dots\dots\dots(8)$$

$$X^{\beta-1} = [\omega / \beta p\alpha Z^\gamma] \dots\dots\dots(9)$$

$$X^* = [\omega / \beta p\alpha Z^\gamma]^{1/\beta-1} \dots\dots\dots(10)$$

Equation (8) indicates that the amount of input needed to obtain maximum profit depends on the output price, input price and fixed input. By substituting equations 8 and 1, the optimum output will be obtained as follows:

$$\begin{aligned} q &= \alpha X^\beta Z^\gamma \\ q &= \alpha [(\beta\alpha Z^\gamma P/\omega)^{1/\beta-1}]^\beta Z^\gamma \\ q &= \alpha [(\alpha Z^\gamma)^{1/\beta-1} (\beta.P/\omega)^\beta / 1-\beta Z^\gamma/1-\beta] \\ q &= \alpha^{1/\beta-1} [(\beta.P/\omega)^\beta / 1-\beta Z^\gamma/1-\beta] \dots\dots\dots(11) \end{aligned}$$

Equation (11) shows that the optimum amount of output produced to achieve maximum profit depends on output prices, input prices and fixed costs Z. is formulated as:

$$X^* = X^*(p,\omega,Z) \dots\dots\dots(12)$$

By substituting equations (10) and (11) into the profit function, then the maximum profit becomes:

$$\begin{aligned} \pi^* &= p[\alpha^{1/1-\beta} [(\beta.P/\omega)^\beta / 1-\beta Z^\gamma/1-\beta] - \omega[\alpha^\beta Z^\gamma.v/\omega]^{1/1-\beta} \\ &= p[\alpha^{1/1-\beta} \beta^{1-\beta} (P/\omega)^\beta / 1-\beta Z^\gamma/1-\beta] - \omega[\alpha^{1/1-\beta} \beta^{1/1-\beta} Z^\gamma/1-\beta .(v/\omega)^{1/1-\beta}] \\ &= \alpha^{1/1-\beta} \beta^{1-\beta} (1-\alpha) Z^\gamma/1-\beta P^{1/1-\beta} \omega^{-\beta/1-\beta} \dots\dots\dots(13) \end{aligned}$$

Equation 13 shows that the maximum profit (π^*) received by farmers depends on the output price (p), input prices (v), and fixed inputs (Z)

The empirical model used in the profit analysis of rice farming is the Cobb-Douglas profit function model with the following equation:

$$\pi_i = v\alpha \omega^\beta Z^\gamma D_i^\phi \dots\dots\dots(14)$$

To estimate equation (14) and data on the profit distribution and determine which is close to the normal distribution, the equation is transformed into logarithmic form

$$\ln \pi_i = \ln \lambda + \alpha \ln v + \beta \ln \omega + \gamma \ln Z + \phi D_i + \epsilon_i \dots\dots\dots(15)$$

π_i = Rice farmer profit (Rp) at planting height < 100 m and (100-500 m), which is normalized

λ = profit function line

V = productivity of rice farming (kg/ha), in the lowlands and medium land

ω = cost of capital (Rp/ha) for farmers in the lowlands and medium land

Z = labor costs (Rp/ha) for farmers in the lowlands and medium land

$D_i = 1$ for farmers in medium land

$= 0$ for farmers in the lowlands

Producer surplus is the difference between the prices of goods that producers can sell and the prices that producers can accept from the number of goods sold. Producer surplus also means the ability of producers to obtain revenue from goods sold at a sacrificed cost. Mathematically, the grain supply equation is made through the Total Cost equation. Generally, the cost function used is a cubed function, so the equation is as follows:

$$TC = C + \beta_1 Q^1 + \beta_2 Q^2 + \beta_3 Q^3 \dots\dots\dots(16)$$

$$MC = \beta_1 + 2\beta_2 Q^1 + 3\beta_3 Q^2 \dots\dots\dots(17)$$

Information:

TC = Total cost (Rp)

MC = Marginal cost (Rp)

C = constanta

Q = amount of grain production (kg)

Because the marginal cost is equal to the supply, the supply equation is the same as equation (17). Maximum profit is achieved when price (P) equals marginal cost (P=MC).

5) Calculating the amount of producer surplus will use the following equation:

$$SP = \delta TR - \delta TC \dots\dots\dots (18)$$

$$SP = MR - MC$$

$$SP = \frac{1}{2} \int (MR - MC) * Q$$

$$SP = \frac{1}{2} \int (P - MC) * Q \dots\dots\dots (19)$$

Information:

SP = producer surplus (Rp)

TR = P * Q = total revenue

TC = total cost

MR = marginal revenue = P

P = equilibrium price or market price of grain (Rp/kg)

MC = marginal cost

RESULTS AND DISCUSSION

1. The Effect of Planting Altitude on Rice Production

Rice production can be influenced by how much the use of production factors used by farmers. In this study, the production factors used included rice seeds, fertilizers, labor, and the height of the planting site. The results of the regression analysis can explain the estimation of how much use of production factors is used and at what stage of return can be achieved. The estimation results can be shown in table 1 below:

Table 1. Estimated Factors of Production of Rice Farming in West Lombok Regency 2022

Variables	Unstandardized Coefficients		t	Sig.
	B	std. Error		
(Constant)	-.212	.790	-.268	.790
In Seed Cost	.383	.084	4,572	.000*
In Fertilizer Cost	.198	.070	2,835	.006*
In Labor Costs	.413	.067	6.127	.000*
Altitude Dummy	-.147	.048	-3,085	.003*

Dependent variable: ln Production

Adjusted R² = 0.956

F = 320.029 *

* shows significance at the 1% level

The overall test results (Table 1) show that all independent variables (seeds, fertilizers, labor and altitude) jointly affect rice production. This information can be seen from the F value of 320,029 which is significant at the 99% confidence level or 1% error level. Also, the value of Adjusted R² = 0.956, which means that 95.6% of the variation in the dependent variable (rice production) can be explained by the independent variables (seed costs, fertilizer costs, labor costs and altitude). It

also means that all of these independent variables affect rice production in West Lombok Regency. In line with the results of research [19] stated that all independent variables such as seeds, fertilizers, labor jointly affect rice production in Central Sulawesi, Indonesia.

Partial testing (Table 1) through the t-test found the estimation results of the four independent variables, namely all of these variables had a significant effect on rice production. To find out how much influence each independent variable has, it can be explained in the following explanation.

The cost of rice seeds, all the respondent farmers planted the Inpari 32 rice variety. Statistically the estimated results of the regression coefficient were 0.383 with a significant level of 0.000 (probability). This means that the variable cost of seeds has a significant effect on rice production, where each additional 1% of seed costs will increase rice production by 0.383%. However, if you look at the magnitude of the regression coefficient, the magnitude is still less than 1, this means that there are still opportunities for farmers to increase the use of seeds to achieve optimal production results. The results of research [20] state that the cost of rice seeds has a significant effect and has a positive contribution to rice production in irrigated land in Isabela Province, Philippines.

Fertilizer costs. Statistically, the estimated regression coefficient is 0.198 with a significant level of 0.006 (probability). This means that the variable cost of fertilizer has a significant effect on rice production, where every 1% additional cost of fertilizer will increase rice production by 0.198%. However, if you look at the magnitude of the regression coefficient, the magnitude is still less than 1, this means that there is still an opportunity for farmers to increase the use of fertilizers to achieve optimal production results. In accordance with the results of research [19] stated that fertilizer inputs had a significant effect on rice production in Central Sulawesi.

Labor Costs. Statistically the estimated results of the regression coefficient are 0.413 with a significant level of 0.000 (probability). This means that the labor cost variable has a significant effect on rice production, where every 1% increase in labor costs will increase rice production by 0.413%. However, if you look at the magnitude of the regression coefficient, the magnitude is still less than 1, this means that there are still opportunities for farmers to increase the use of labor to achieve optimal production results. In line with the results of research [20] which states that labor costs have a significant effect and have a positive contribution to rice production in irrigated land in the Province of Isabela Philippines.

Planting Height, Statistically the estimated results of the regression coefficient are -0.147 with a significant level of 0.003 (probability). This means that the variable height of the planting area has a significant effect on rice production, where the medium land produce rice production 0.147 times lower than the lowland areas. It also means that higher areas where rice is planted produce lower rice production. According to the results of research [6] that the number of productive tillers and grain filling in the highlands is lower than the lowlands.

Empirical Results of Profit Models

In economic theory states that the profit received depends on the amount of income and costs incurred. The results show that the profit for rice farmers in the lowlands is higher than that of farmers in the medium land. The profit of farmers in the lowlands is 41.83% greater than rice farmers in the medium land and the difference is significant with a p-value of 0.000 (Table 2).

The high profit of rice farmers in the lowland areas is due to higher revenues compared to farmers in the medium land. The income of farmers in the lowlands is 33.14% greater than that of rice farmers in the medium land and the difference is significant at a p-value of 0.000 (Table 2). The high income of farmers in the lowlands is due to the productivity and selling price of grain, even though the capital costs and labor costs are higher than those of farmers in the medium land.

Table 2. Profits from rice farming per hectare in West Lombok Regency, 2022

No	Items	Rice Farmers		t-stat	p-values
		Lowland	Middle Land		
1.	Profit (Rp/ha)	17,901,111	12,621,165	-8,243	0.000
2.	Revenue (Rp/ha)	26,980,223	20,264,411	-9,448	0.000
3.	Productivity (kg/ha)	6,889	5.194	-10,229	0.000
4.	Capital Cost (Rp/ha)	1,379,869	2,437,595	11083	0.000
5.	Labor Costs (Rp/ha)	7,297,152	4,970,035	-9,064	0.000

The results show that the productivity of rice in the lowland areas is higher than that of rice farming in the medium land. The productivity of rice in the lowland areas is 32.63% greater than rice farmers in the medium land and the difference is significant with a p-value of 0.000 (Table 2). The average selling price of grain per kilogram received by farmers in the lowland areas is IDR 3,917, while for farmers in the medium land it is IDR 3,897 per kg.

In general, the results show that the average cost of capital incurred for rice farmers in the lowland areas is lower than that of farmers in the medium land. The cost of capital for farmers in the lowlands is 43.39% lower than rice farmers in the medium land and the difference is significant with a p-value of 0.000 (Table 2).

The results show that the labor cost for rice farmers in the lowland areas is higher than that of farmers in the medium land. value 0.000 (Table 2).

The Effect of Planting Altitude on Rice Farming Profits

To test the hypothesis that there is an effect of planting height on the profit of rice farming, a statistical test of the profit function was carried out for groups of farmers in the lowlands and

groups of farmers in the medium land, and a combination of farmer groups in the dummy variable. Testing the influence of productivity variables, capital costs, labor costs on profits is made using the Cobb-Douglas profit function regression model which is summarized in table 3

Table 3. Estimated Profits Earned by Rice Farming in Lowland and Medium Regions in West Lombok Regency, 2022

No	Explanatory Variables	Famer Profit Function		
		Lowland	Middle Land	combined
1	Intercepts	11036 (0.742)*	13,402 (2,952)*	9,627 (1,660)*
2	Productivity (ln X1)	1,496 (0.059)*	1931 (0.243)*	1,540 (0.138)*
3	Cost of Capital inputs (ln X2)	-0.004 (0.020)	-0.552 (0.152)*	-0.125 (0.061)**
4	Cost of Labor input (ln X3)	-0.476 (0.046)*	-0.356 (0.112)*	-0.302 (0.079)*
5	Dummy of Planting Hight	-	-	0.028 (0.061)
	Adjusted R2	0.957	0.676	0.836
	F	214,294*	21.174*	76,296*
	Number of Observations	30	30	60

Source: Profitability model analysis of two growing altitude areas and their combination in one analysis package shown from t test statistics

** indicates statistical significance of 5%

* shows statistical significance of 1%

Dependent variable is ln Profit (π /ha)

The regression model for the profit function for rice farmers in table 3 shows that the value of the coefficient of determination R2 for farmers in the lowland region is 0.957 and for farmers in the medium land region is 0.676, and the combination in both regions is 0.836. This means that 95.70% of the variation in profits for farmers in the lowlands is then 67.60% of the variation in profits for farmers in the medium land, and 83.36% of the variation in profits for farmers in the two highlands can be explained by explanatory variables such as productivity of rice farming, capital costs, costs labor, and the height of the planting site. This means that there are 4.30% for farmers in the lowlands, 32.40% for farmers in the medium land, and 16.

Based on the results of the t-test or partial test, most of the variables included in the regression model have a significant effect on the profits of rice farming in West Lombok Regency. In addition to the significance seen, it is also necessary to pay attention to the magnitude and sign of the regression coefficient.

First, the productivity variable has a positive sign with a magnitude of more than 1. This means that every 1% increase in rice productivity will increase profits by 1.49% for groups of farmers who are in the lowland areas, then 1.391% for groups of farmers who are in the medium land, and 1,540% for the combination of the two regions. This means that the increase in productivity provides an increase in profits from rice farming which is more responsive or the elasticity is more than 1 and can be classified as elastic. This increase in productivity can be due to the use of production facilities in a balanced way, such as the use of Inpari 32 rice seeds, urea, ponska, and ZA.

Both capital cost variables are negative with a magnitude of less than 1. This means that a 1% increase in the cost of capital will reduce profits by 0.004% for the lowlands, and 0.552% for the medium land, and 0.125% for the combination of the two regions. The variable response of capital input costs for the medium land region is greater than that for the lowland areas for the profit of rice farming. When compared to the average costs incurred by farmers for rice seeds and fertilizers, the average capital cost of the farmer group in the medium land is higher than that of the farmer group in the lowlands, which is IDR 329,667 compared to IDR 308,000 (the cost of rice seeds) and Rp. 1,301,008.- compared to Rp. 553,583.- (for the cost of fertilizer). There are allegations that excessive use of fertilizer costs at high prices has caused capital input costs to increase even more. The results of the study [22] state that the capital cost factor has a significant effect on rice farming income in Rwanda. The results of the study [23] state that the cost of capital or production facilities has a significant effect on the income of rice farmers in Gowa Regency, Indonesia.

Third for variable labor costs, where the magnitude is less than 1 with a negative sign. This means that every 1% increase in labor input costs will reduce rice farming profits by less than 1%, namely 0.476% for the lowland areas, and 0.356% for the medium land regions and 0.079% for the combination of the two regions. This means that the use of labor in the lowlands is more than in the medium land so that the response to profits is greater. The results of the study [22] state that the labor cost factor has a significant effect on the income of rice farming in Rwanda.

The four variables are the height of the rice planting area, where the magnitude is less than 1 with a positive sign, meaning that in the medium land the response is 0.028 times greater than in the lowland areas to the profit of rice farming. However, this height variable does not significantly influence the profit of rice farming. This means that the profit of rice farming does not require a special place because what determines profit is the quantity of production and the selling price of grain. The price of grain in the two regions is different where the price of grain received by farmers in the lowland areas is an average of IDR 3,916.67 per kilogram while in the medium land the

average is IDR 3,896.67 per kilogram. This price difference is not too big (the results of the t-test on grain prices show a significance value of 0).

Producer Surplus Analysis

Producer surplus is one measure to assess the welfare of producers or farmers. The producer surplus is very dependent on the production per hectare of rice or the level of productivity and the difference between the market price of grain and the minimum price of grain that producers are still able to accept. The results of the study (Table 4.) can explain that the average productivity of rice yields in the two land is very different where in the lowlands it is 32.63% greater than rice farmers in the medium land and the difference is significant with a p-value of 0.000 (Table 2). Next, the difference in productivity with Break Even Point Production is quite large, where in the lowland areas the difference in production is 3539 kg/ha or 108% and in the medium land it is 2202 kg/ha or 73.57%.

Table 4. Producer Surplus of Rice Farmers in West Lombok Regency in 2022

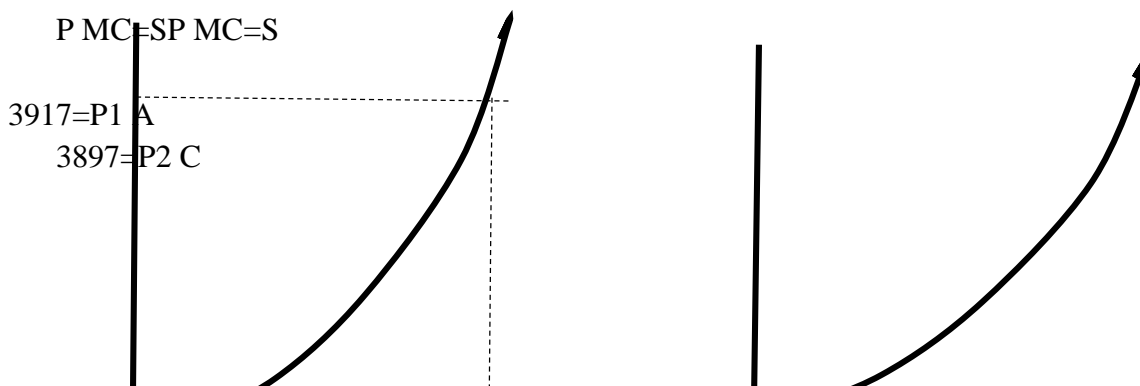
No	Items	Rice Farmers		Combination
		Lowland	Middle Land	
1	Grain Market Price (Rp/kg)	3,917	3,897	3,907
2	Production Break-Even Point (kg/ha)	3,270	2,993	3,316
3	Average Productivity (Kg/Ha))	6,889	5,194	6,042
4	Producer Surplus (Rp)	12,481,227	6,555,130	9,625,460

The difference in the price of grain received by farmers in the two regions is caused by first, most farmers in the medium land area sell grain with relatively lower quality, namely the grain moisture content is still relatively high, secondly, producers are dealing with several wholesalers so that the bargaining position of farmers is still weak. Third, at harvest time most farmers need money for household needs, for example for children's education, health, and social activities. In line with the opinion [8] which states that in general farmers have characteristics in marketing results where the bargaining position of rice farmers tends to be weak, because: generally farmers sell rice immediately after harvest in the form of dry grain harvest and even by slashing, farmers are faced with the need for cash for the cultivation of land in the next period, Therefore, the added value from post-harvest is mostly enjoyed by traders, and rice supply is not elastic and the rice market is segmented locally. Then what often becomes a problem is the low quality of grain that is sold due to the high-water content due to cloudy weather which often occurs during the rainy season. The price range for grain received by farmers is between Rp. 3,500/kg to Rp. 4,100/kg in the medium land area. Meanwhile, farmers in the lowlands sell unhulled rice at prices ranging from IDR 3,900/kg to IDR 4,000/kg. Then what often becomes a problem is the low quality of grain that is sold due to the high-water content due to cloudy weather which often occurs during the rainy season. The range of grain prices received by farmers is between Rp. 3,500/kg to Rp.

4,100/kg in the medium land area. Meanwhile, farmers in the lowlands sell unhulled rice at prices ranging from IDR 3,900/kg to IDR 4,000/kg. Then what often becomes a problem is the low quality of grain that is sold due to the high-water content due to cloudy weather which often occurs during the rainy season. The range of grain prices received by farmers is between Rp. 3,500/kg to Rp. 4,100/kg in the medium land area. Meanwhile, farmers in the lowlands sell unhulled rice at prices ranging from IDR 3,900/kg to IDR 4,000/kg.

To plan rice farming that provides maximum profit, farmers must be able to calculate the return point for farming or it is called the Break Even point, where at this point it will be seen how far the farmer will estimate the profit to be obtained. The results of the Production Break Even Point analysis are shown in Table 4. The Break Even Point of Production in the lowland areas is higher than in the medium land, but the difference is not too stark. The results showed that the productivity of rice produced by farmers was still above the break even point, this meant that farmers were able to generate revenue and income from the costs that were sacrificed. In other words, from the socio-economic size, farmers have been able to generate sufficient profits to carry out farming socio-economic activities at a later time, and this can be categorized as farmers who have achieved prosperity. In line with the results of research [23] which states that the level of welfare of farmers in narrow, medium and large areas has achieved a high level of welfare seen from socio-economic indicators or the Central Bureau of Statistics.

So based on the previous description it can be seen that the producer surplus in the two regions is very different where the producer surplus in the lowland region is higher than that in the medium land region. This shows that farmers in the lowlands are more prosperous than farmers in the medium land. The magnitude of this producer surplus can be interpreted as the government's success in establishing a policy to increase rice production and at the same time the welfare of rice farmers through several policies including the policy of subsidizing the price of urea fertilizer, increasing the purchase price of grain for farmers, increasing the area of rice planting areas, and increasing irrigation areas. Besides, from the side of the farmers themselves also have a role in improving their welfare such as how to manage farming well starting from preparing rice seeds, maintaining planting, fertilizing properly, up to harvest handling. In line with the results of research [24] stated that the capacity of farmers affects the welfare of farmers, namely about the abilities of farmers themselves such as cultivation techniques, capabilities from seeding, seeding, planting, weeding, fertilizing to handling plant pests. It was also said [25] that a combination of government policies through policies to increase irrigation areas, increase the purchasing price of farmers' grain, increase the rice planting area, and decrease the price of urea fertilizer, led to a larger producer surplus. The results of the study [26] also stated that the level of welfare of paddy rice farming households as a whole or on average in narrow, medium,



SP
SP

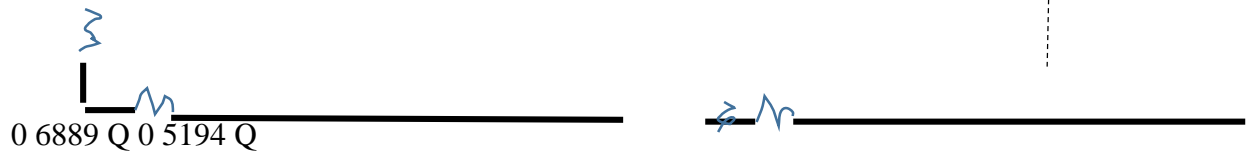


Figure 1. Producer Surplus (SP) in the lowlands
Figure 2. Producer Surplus (SP) in the medium land

CONCLUSION

1. Producer surplus analysis model $\frac{1}{2} \int (P-MC) * Q$ can be used as a measurement of the welfare level of paddy rice farming households.
2. The welfare level of rice farming households in the lowland areas is higher than that of lowland rice farming households in the medium land areas

RECOMMENDATION

1. In measuring the welfare level of paddy rice farming households, the $\frac{1}{2} \int (P-MC) * Q$ equation model can be used.
2. There is evidence that the height of the lowland rice cultivation has a significant effect on lowland rice production. The productivity of lowland rice farming in the lowlands is higher than the productivity of lowland rice farming in the medium land.
3. The results of this study recommend that the government prevent land conversion from agriculture to non-agriculture in lowland areas, preferably housing and industrial development locations on unproductive land.

REFERENCES

- [1] UTAMI, SILMI NURUL. Impact of the conversion of agricultural land into industrial land. Kompas.com.2021.
<https://www.kompas.com/skola/read/2021/12/24/185858869/dampak-konversi-lahan-pertanian-jadi-lahan-industri?page=all>.
- [2] HIDAYAT, Y., ISMAIL, A., EKAYANI, M. The impact of agricultural land conversion on the household economy of rice farmers (case study in Kertajati district, Majalengka regency, West Java). Agricultural Technology Assessment and Development Journal, Agricultural Research and Development Agency. 2017, 20(2), 171–182.
- [3] ERNAWATI, ANDRESWARI, D., ALEXANDER, T. Land suitability prediction model for food crops with backpropagation neural network (case study: Bengkulu Hilir Sub-Das). Pseudocode Magazine. 2020, 7(1), 35-40
- [4] LI, YUEJIAU., X. YANG, H. CAI, L. XAO, X. XU AND L. LIU. Topographic features of agricultural potential productivity during the transformation of farmland in China. Sustainability, 2015, 7(1), 96-110.
- [5] NATIONAL LAND AGENCY OF WEST LOMBOK REGENCY (2021). West Lombok Regency Surveying, 2021.
- [6] GUO, L., M. LIU, Y. ZHANG, Y. TAO, F. ZHANG, G. LI, K. DITTERT AND S. LIN. Yield differences increase with ascending altitude between traditional paddy-rice production systems and water-saving mulch rice production systems. European Journal of Agronomy. 2017, 92, 9-16.
- [7] AZIS A., SUNARMINTO, BH, RENANTI, MD. Assessing the suitability of land for growing food crops using artificial neural networks. MIPA Gajah Mada University Periodical Magazine. 2006, 16(1):1-10.
- [8] GENERAL DIRECTORATE OF FOOD CROPS. Technical Instructions Seed Subsidy Year 2017. Ministry of Agriculture. 2017, 1-31
- [9] SINGH, R.P and AGRAWAL, R.C. Improving Seed System Efficiency by Seizing Farmers' Rights in India by Adopting and Implementing Quality Declared Seed System Policies in Parallel. MOJ Ecology and Environmental Sciences, 2018, 3(6),387-391
- [10] MINISTER OF TRADE OF THE REPUBLIC OF INDONESIA. Acquisition and Distribution of Subsidized Fertilizers for the Agricultural Sector. Regulation of the Minister of Commerce Number 4 of 2023. 2023, 1-27

Received: / Revised: / Accepted: / Published:

Fund projects: The Rector, and Derectur of Research and Community Service Mataram University, Indonesia

About the author(s): Tajidan Tajidan (1959), male, lectural of Magister Agribusiness Study Program Mataram University, E-mail: tajidan@unram.ac.id

Corresponding author: Suparmin Jinem (1964), male, lecturer of Agricultural Faculty Mataram University, E-mail: suparminjinem@gmail.com

- [11] NUGROHO, AD, SIREGAR, AP, ANDANNARI, E., SHAFIYUDIN, Y., CHRISTIE, J.I. The distribution of subsidized fertilizers in Bantul Regency, special region of Yogyakarta province. *AGRISOCIONOMICS Magazine of Agricultural Socioeconomics*. 2018, 2(1): 70-82
- [12] MAULANA, M., AND RACHMAN, B. Government rice purchase price in 2010: its effectiveness and implications on DOLOG's rice purchase. *Journal of Agricultural Policy Analysis*. 2011, 9(4), 331-347
- [13] BROTHER, SAPTANA. Rice pricing policy revised from the dimensions of price endings. *Journal of the Agroeconomic Research Forum*, 2017, 35(1): 31–43.
- [14] SUPARMIN, ZAINI, A., SIDDIK, M., TAJIDÁN. The effectiveness of the government's purchase price policy for paddy and rice as a price stabilization tool on the island of Lombok, West Nusa Tenggara. *Agricultural Policy Analysis Journal*. 2022, 20(2), 147-159
- [15] RONALD S. BADU., SITI PRATIWI HUSAIN. Farm Accounting: Net Farm Income Farmers Welfare. *International Journal of Innovative Science and Research Technology*, 2021, 6(9), 361-369
- [16] CENTRAL BUREAU OF STATISTICS FOR THE WEST LOMBOK REGENCY. West Lombok Regency in figures, 2016.
- [17] SADOULET, E. AND DE JANVRY, A. *Quantitative Analysis of Development Policy* The Johns Hopkins University Press. 1995, 61-63
- [18] SUHARYANTO, MAHAPUTRA, ARYA. Relative Economic Efficiency of Lowland Rice Crop Using the Profit Function Approach in the Field School Integrated Crop Management Program in Bali Province. *Agricultural Informatics*, 2015, 24 (1): 59 – 66
- [19] MUHARDI AND EFENDIA. Technical Efficiency And The Factors Affecting It In Rice Production In Indonesia. *Asian magazine of agricultural and rural development*. 2021, 11(3): 230-235
- [20] CANETE, D.C., TEMANEL, B.E. Factors influencing productivity and technical efficiency of rice farmers in Isabela, Philippines. *Journal of Advanced Agricultural Technologies*, 2017, 4(2): 111–122.
- [21] WILUJENG, E.D. and FAUZIAH, E. Technical efficiency and factors influencing rice production in Lamongan Regency. *Agroscience Magazine*. 2021, 1(3): 712-727.
- [22] NGANGO, JULES. Does empowering women improve yields and income? Evidence from rice farmers in Rwanda. *Asian magazine of agricultural and rural development*. 2022, 12(3): 201-209.
- [23] ALFRIDA, A., NOOR, T.I. Analysis of Income and Welfare Level of Rice Households Based on Area. *Agroinfo Galuh*. 2017, 4(3), 426-433
- [24] SULISTYAWATI, R., KUSRINI, N., IMELDA. Influence of Farmer Characteristics and Management Capacities on the Welfare of Rice Farmers. *Magazine of economic development analysis*. 2021, 4, 403-412
- [25] MULWANYI, A., HUTAGAOL, P., SINAGA, B.M. Impact of rice purchasing policy on the welfare of producers and consumers in Indonesia. *International Society for Agricultural Sciences of Southeast Asia (ISSAAS)*. 2011, 17(2), 48-57
- [26] PUTRI, CK, NOOR, T.I. Analysis of Income and Welfare Level of Rice Farming Households Based on Land Area in Sindangsari Village, Banjarsari District, Ciamis District, West Java Province. *Agroinfo Galuh Magazine*. 2018, 4(3), 927-935
- [27] PRATAMA, N., ZULFANETI, UMIYAT, E. Welfare analysis of rice farmers in Warm Water District East Kerinci Regency. *Economic Paradigm Magazine*. 2021, 6(4), 705-716

Re: Paper Submission



editorialoffice@nyjxxb.net 11 Apr 2023, 22.50 (13 jam yang lalu)

kepada saya

Terjemahkan pesan

Nonaktifkan untuk: Inggris

Dear Authors,

Greetings from the Nongye Jixie Xuebao/ Transactions of the Chinese Society of Agricultural Machinery. Thank you very much for submitting your manuscript to the Nongye Jixie Xuebao/ Transactions of the Chinese Society of Agricultural Machinery.

Your paper has been reviewed by 2 independent experts. Having considered the reviews, we have reached a decision regarding your submission.

Our decision is to: Revision Required.

If you want to publish in Nongye Jixie Xuebao/ Transactions of the Chinese Society of Agricultural Machinery, Volume 54, Issue 4, April 2023, you need to send the following to the editorial office by e-mail at the following address: editorialoffice@nyjxxb.net :

1. The article strictly formatted according to the template recommendations for authors and correct the article on the reviewers' recommendations, see http://nyjxxb.net/paper_template.docx . All revisions should be highlighted in the article.
2. Payment receipt.

Please highlight the corrections in this article in Red. We hope you'll do great.

The reviewers recommend you:

The topic is interesting and important. However, there are several key areas that need more work.

Reviewers:

- 1 - Authors should explain better the criteria for selecting the research object and the limitations of the application of the results obtained should be specified.
- 2 - Describe the scientific methods used in the study. Please present a schematic representation of the steps involved in conducting the study.
- 3 - Authors should explain the academic contribution of the work developed (150 words in conclusion). Highlighting what is innovative/original about the existing literature.

This paper is novel because it seeks to contribute to the current debate

in the literature.....The scientific novelty of the article also consists of a conducted large-scale study describing the author's theoretical and practical prerequisites.....

Please consider the reviewer's comments, and revise that as soon as possible.

Deadline for providing revised article and payment: April 19, 2023.

The article will be published until May 20, 2023.

Nongye Jixie Xuebao/ Transactions of the Chinese Society of Agricultural Machinery charges Publication Fee at the rate of EUR 400.00. All articles published in our journal are open access and freely available online, immediately upon publication.

We recommend that the authors use the academic text editing service for the scientific articles, not just proofreading. Please use the American English option. We recommend the use of large, trusted companies with editors having a Ph.D. degree. You should also attach an editing certificate or use the editorial office services. Articles that native English speakers do not edit are not allowed for publication. The editorial team provides academic proofreading services for the authors at an additional cost - EUR 100, if you don't attach an official English editing certificate. The fee's already included in the invoice.

https://invoice.stripe.com/i/acct_1Ja3OqJAnp8X2J3O/live_YWNjdF8xSmEzT3FKQW5wOFgySjNPLF9OaDZqalpPMUJpZ3N2djd1Q1Y3TU9yV3o5WUhyN3BvLDcxNzY1NDE50200CKjFKPgA?s=db

We gave you a discount of 100 euros for the publication of your article. The publication fee is 400 euros, the operator's fee for the transfer is 20 euros.

Articles published in the Nongye Jixie Xuebao/ Transactions of the Chinese Society of Agricultural Machinery will be Open-Access articles distributed under the terms and conditions of the Creative Commons Attribution License (CC BY). The copyright is retained by the author(s).

Nongye Jixie Xuebao/ Transactions of the Chinese Society of Agricultural Machinery ranks number 14 among China's agricultural engineering academic journals, and it has been in the Q2 zone: Agricultural and Biological Sciences (miscellaneous) and Mechanical Engineering for nine consecutive years. Citescorpe Scopus is 2.9.

If you have any questions, please do not hesitate to contact us.

We thank you!

Sincerely,

Editor-in-Chief: Prof. Ren Luquan (主编: 任露泉)

<http://nyjxxb.net>

Sponsored by: Chinese Society for Agricultural Machinery (CSAM) and Chinese Academy of Agricultural Machinery Sciences (CAAMS).

Address: No.1 Beishatan, Deshengmenwai, Beijing, P.R. China Postd code: 100083.

E-mail: editorialoffice@nyjxxb.net

----- Original Message -----

Subject: Paper Submission

Date: 2023-03-16 02:39

From: Nongye Jixie Xuebao/Transactions of the Chinese Society of Agricultural Machinery <admin@nyjxxb.net>

To: editorialoffice@nyjxxb.net

Title of your paper: SURPLUS PRODUCER AS A MEASURE OF HOUSEHOLD WELFARE LEVELS IN RICE CROPS: A CASE STUDY OF RICE CULTIVATION IN LOW AND MEDIUM LANDS

Corresponding Author's Email Address: suparminjinem@gmail.com

Author(s): Suparmin; Tajidan Tajidan

Keywords: household, rice, farmers, agriculture

Abstract: The objective of the study is to find the appropriate surplus producer analysis model to measure farmer family welfare levels in paddy rice fields in the low and medium land. The study implemented in Indonesia with lead location of low and medium lands of rice fields on the island of Lombok. low land rice fields are represented in Kediri district while medium lands rice fields are represented in the Narmada district. In each district, it has been chosen 30 rice farming units, then the number of sampling units were 60 rice farming units rice field.

Data was collected were using observation, survey, and interview where the respondent are farmers of paddy rice field. Data analyzed using improvement profit function to become surplus producer function. This study showed that the appropriate model of analysis of the surplus of the producer as measurement level family well-being farmer paddy rice field is $\hat{A}^{1/2} \hat{E}f(P - MC)*Q$. This model can be applied to rice paddy agriculture such as rice paddy farmer household welfare level in the low land higher than in the middle land.

â€ˆ The submission has not been previously published, nor is it before another journal for consideration (or an explanation has been provided in Comments to the Editor).

â€ˆ The submission file is in OpenOffice, Microsoft Word, or RTF document file format.

â€ˆ Where available, URLs for the references have been provided.

â€ˆ The text is single-spaced; uses a 12-point font; employs italics, rather than underlining (except with URL addresses); and all illustrations, figures, and tables are placed within the text at the appropriate points, rather than at the end.

â€ˆ The text adheres to the stylistic and bibliographic requirements outlined in the Author Guidelines.

Satu lampiran • Dipindai dengan Gmail



Thank you for the information.

Thank you for your response.

Noted with thanks.

Manuscript Revision:

Article Type: Research article

Category: Social Economics of Agriculture

The Surplus Producer as a Measure of Household Welfare Levels in Rice Crops: A Case Study of Rice Cultivation in Low and Medium Lands

Suparmin Jinem¹, Tajidan Tajidan²

(1. Faculty of Agriculture University of Mataram, Mataram 83124, Indonesia;

2. Agribusiness in Magister Study Program, University of Mataram, Mataram 83124, Indonesia)

Abstract: The objective of the study is to find the appropriate surplus producer analysis model to measure farmer family welfare levels in paddy rice fields in the low and medium land. The study was implemented in Indonesia with the lead location of low and medium lands of rice fields on the Lombok Island. Low land rice fields are represented in Kediri district while medium lands rice fields are represented in the Narmada district. In each district, it has been chosen 30 rice farming units, then the number of sampling units were 60 rice farming units rice field. Data was collected using observation, survey, and interview where the respondents are farmers of paddy rice fields. Data analyzed using improvement profit function to become surplus producer function. This study showed that the appropriate model of analysis of the surplus of the producer as measurement level family well-being farmer paddy rice field is $\frac{1}{2} [(P - MC) * Q]$. This model can be applied to rice paddy agriculture such as rice paddy farmer household welfare level in the low land higher than in the middle land.

Keywords: household, rice, farmers, agriculture

文章标题

名姓¹, 名姓², 名姓³

(1. 部门、单位、城市、邮政编码、国家)

2. 部门、单位、城市、邮政编码、国家)

3. 部门、单位、城市、邮政编码、国家)

摘要: 摘要的总字数不得超过 200 字。摘要应该是一个单独的段落, 并且应该遵循结构化摘要的风格, 但没有标题: 1) 背景: 将所解决的问题置于广泛的背景中并突出研究的目的; 2) 方法: 简要描述应用的主要方法或处理方法。包括任何相关的预注册编号, 以及使用的任何动物的物种和品系。3) 结果: 总结文章的主要发现; 4) 结论: 指出主要结论或解释。摘要应该是文章的客观表示: 它不能包含在正文中没有呈现和证实的结果, 也不应该夸大主要结论。

关键词: 关键字 1; 关键字 2; 关键字 3 (Authors do not need to translate the article title, abstract, keywords, and references into Chinese)

1 Introduction

The decline in the area of agricultural land in Indonesia continues to this day, including in West Lombok Regency. This is as a result of ongoing industrial and housing development on a large scale. Ironically, the development uses productive agricultural lands. While productive agricultural land is very useful for the provision of food for regional and national residents. [1] Stated that as reported by the Food and Agriculture Organization of the United Nations, in 2050 it is estimated that there will be an increase of 70 percent of global food needs. The first impact felt from the conversion of agricultural land into industrial land is reduced food production. Land conversion will make paddy fields and other agricultural land narrower, automatically agricultural land will become narrower. According to [2], conversion of agricultural land can reduce rice production by 12.276 tons/ha/year in Majalengka Regency, West Java. So, the development considerations for the industrial and housing sectors should use non-productive land and maintain productive land. Therefore, consideration of the adjustment of agricultural land for agricultural production in the future is important. The suitability factor of agricultural land both for the suitability of various rice varieties and altitude needs to be considered by farmers. According to [3] that land suitability is the suitability of a land for a particular use, for example land suitable for irrigated land, ponds, annual crop farming or seasonal crop farming. Thus, land suitability for food crops needs information support.

Each plant has the ability to grow and adapt to the environment in which it is planted, including the altitude where it is cultivated. Although rice planting must be adjusted to the suitability of the planting site, the rice planting location must be

able to produce high rice production. [4] classifies the altitude for agriculture into four classes, namely <100 m, 100 – 200 m, 200 – 800 m, and > 800 m. Meanwhile, according to [5] that the topography of West Lombok Regency based on altitude is divided into four, namely (0-100 m) covering an area of 34,800 ha, (100-500 m) covering an area of 40,966 ha, (500-1000 m) covering an area of 8,650 Ha, and > 1000 m area of 885 Ha. The data shows that the area of agricultural land in the lowland areas still dominates, especially in the high-altitude areas (0-100 m) and (100 - 500 m) above sea level.

Land use that pays little attention to land suitability class, agro-ecology, and planting height tends to produce less optimal agricultural business and will even bring losses to farmers because it will use very large production factors to increase soil fertility. In line with the opinion [7] which states that the productivity of food crops depends on the quality of the land used. If the selection of land at the beginning of development does not select productive areas, then considerable (financial) losses will occur later. Therefore, the evaluation of land suitability can answer the level of land suitability for the development of a commodity and economically it will answer the feasibility of farming.

Besides the suitability of agricultural land, pre-harvest and post-harvest issues of paddy rice also need attention. In the pre-harvest or rice production period, farmers are faced with seed problems (high-yielding varieties). The price of superior rice seeds makes it difficult for farmers to meet production targets. Because superior rice varieties will produce high rice productivity. This rice seed problem can be overcome through the implementation of a price subsidy policy for certified rice seeds [8]. The government cooperates with state-owned enterprises and

local breeders in each region in procuring and supplying subsidized certified rice seeds. The indicator of success in this program is the provision, sale and distribution of subsidized rice seeds to farmers or farmer groups. Likewise said [9] that producing superior varieties and distributing them to farmers requires an efficient and effective formal seed system in order to obtain optimal benefits. Another policy during the pre-harvest period carried out by the government is the fertilizer subsidy policy. Provision of balanced fertilizer on rice plants will provide high production yields. [10] government through the Ministry of Trade No. 4 of 2023 year has stipulated the procurement and distribution of subsidized fertilizers for the agricultural sector. According to [11] the implementation of the distribution of fertilizers to farmers as a whole is quite effective and efficient, but sometimes the quantity and price are not right and the flow does not comply with the official provisions set by the government.

The problem during the post-harvest period of rice is that in general the facilities owned by farmers in grain management are still inadequate, such as not having a drying floor and not having grain storage warehouses. This will impact marketing, revenue, and profits for lowland rice farmers. [12] States that in general farmers have characteristics in marketing the results where the bargaining position of rice farmers tends to be weak. The failure of the local grain market is a strong reason for the need for government intervention in the grain and rice market. [13] stated that the government is very interested in controlling for farmers the stability of rice supply and prices through grain or rice policies both protective and promotive in nature, all of which have a direct or indirect impact on the welfare of farmers. Therefore, the government has provided support for grain prices or the basic price of grain for farmers every year so that the price of grain received by farmers is not too low.

From the various problems faced by farmers and the implementation of various government policies both during the pre-harvest and post-harvest periods, it will be able to have an impact on the income and welfare that farmers expect. [15] Stated that the welfare of farmers will be

achieved if each farmer can meet the desired rice price target, which can be seen in the desired farmer's net income. Unfortunately, the price of unhusked rice (paddy) which is desired to meet the welfare of farmers cannot be separated from the "forces" that play in various fields. This is a big problem for farmers because a weak bargaining position makes farmers unable to receive prices that are in line with expectations, which can threaten farmers' income and farmers' welfare. The problem that arises is whether the suitability of the height of the rice planting area (low and medium land) in West Lombok Regency will result in production, profit, and producer surplus (welfare) for farmers from different lowland rice farming. Therefore, it is necessary to conduct a study on: Producer Surplus as a Measuring Level of Welfare of Paddy Rice Farming Households: Learning from the Case of Rice Farming in the Lowlands and Medium Land

The objective of this study is to find an appropriate producer surplus analysis model as a measure of the welfare level of paddy rice farming households in the lowlands and medium land. In particular, this study aims to analyze the differences in production and profit and find differences in the producer surplus of rice farming in the lowlands and medium.

The results of this study add to knowledge and make it easier to analyze producer surplus for academics and practitioners in all types of household-scale farming.

2 Materials and Methods

2.1 Research Subject

This research was carried out on West Lombok Regency, West Nusa Tenggara, Indonesia. The Research topics were cultivation which were grown during the 2021/2022 rainy seasons.

2.2 Research Design

The research was designed using an explanatory method, that is, research that explains and relates one variable to another that

is different but interrelated and produces a causal relationship [8].

The main variables that are connected and sought for correlation are the level of production and factor production of paddy. Profit with productivity, cost of labor, cost of capital, surplus producers that is connected production with price paddy.

The research locations were determined stages (multistage purposive sampling) starting from the districts, and sub-districts to the village level. The selection of districts was based on the production centers of paddy, thus West Lombok Regency was selected. Additionally, two sub-districts/villages were selected which cultivate the paddy, each sub-district/village is expected to represent lowland (< 100 msl) and midland (100 – 500 msl). [5] and [16]. The location selection was based on the height of the area and the result of previous research that the altitude of the area affects the production, income, and producer surplus of paddy farming and this expected to apply to paddy farming (fig. 1). On the bases of these considerations, Jagaraga Indah village in Kediri Sub-district was chosen to represent the lowland area, and Grimax Indah Village in Narmada Sub-district was chosen to represent the Midland area.

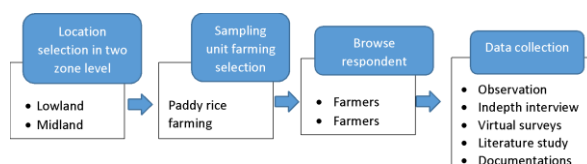


Fig. 1. Stage of The Research

2.3 Research Respondents

Farmers who were the object research were farmers who cultivate paddy during the rainy seasons in 2021/2022 and had experience cultivating these paddy. Initial information of the paddy farmers was obtained from farmers groups in each sample village. Then we randomly selected (random sampling) each 30 respondent farmers with the criteria according to the aforementioned provisions. Therefore the research obtained 60 respondents.

2.4 Data Collection

The Data collection was carried out by combining several methods simultaneously, namely observation, virtual survey, in-depth interview, literature studies, and documentations. Observations were made through direct observation at the location of the farm and where the farmer lives. The survey was carried out by interviewing rice farmers using a list of questions, while in-depth interviews were conducted to verify the data with the documents or records of their farming, documentations activity of farmers in the fields, and collected informations from West Lombok District Agriculture Office.

2.5 Procedure for the Data Analysis

Measuring the welfare of lowland rice farmer households through producer surplus starts from measuring production using the Cobb-Douglas production function. Then measure the profit of rice farming through the Unit Output Price Cobb-Douglas Profit Function (UOP-CDPF) technique. Lastly measure the welfare of producers through the measurement of producer surplus which is derived from the profit function.



Fig. 2. The Stage of The Producers Surplus

2.5.1 Variables and Data Analysis

The data collected from the survey was then edited, tabulated and analyzed. The analysis model used is:

- 1) Cobb-Douglas production and profit functions. Yotopoulos and Lau (1979) in [17], and [18] state that the profit function can be derived using the Unit Output Price Cobb-Douglas Profit Function (UOP-CDPF) technique, with the assumption that producers maximize

satisfaction for profits. UOP-CDPF is a function that includes production and factors of production normalized to output prices.

2) Cobb-Douglas Production Function with four independent variables, namely seed costs, fertilizer costs, labor costs, and the dummy variable altitude.

$$q = \alpha X^\beta Z^\gamma \dots\dots\dots (1)$$

Information:

q = output quantity

X = quantity of the variable input

Z = quantity of the fixed input

α = intercept (constant)

β and γ = elasticity of output from input X and Z

The empirical model of the Cobb-Douglas Production Function in this analysis is shown in the following equation:

$$q_i = \alpha X_i^\beta Z_i^\gamma D_i^\phi \dots\dots\dots (2)$$

To facilitate the estimation of equation (12) and data in the production distribution and determination of the normal distribution, the equation is transformed into a linear form by making it with logarithms, then the equation becomes:

$$\ln q_i = \ln \alpha + \beta \ln X_i + \gamma \ln Z_i + \phi \ln D_i + \epsilon_i \dots (3)$$

q_i = Paddy production (kg), at an altitude of < 100 m and an altitude of 100-500 m

α = constant

X_i = cost of production factors (seeds, fertilizers, labor) (Rp)

Z_i = fixed costs (Rp)

D_i = 1 for altitude (100-500 m) for altitude < 100 m

2.5.2 Receiving Function

$$R = p * q$$

$$R = p * \int \alpha X^\beta Z^\gamma$$

Information:

R =Revenue

p = prices

q = quantity of productions

X = quantity of the variable input

Z = quantity of the fixed input

α = intercept (constant)

β and γ = elasticity of output from input X and Z

2.5.3 Cost Function:

$$C(q) = vZ + wX \dots\dots\dots (4)$$

Information:

v = capital rent for fixed input

w = price of variable input

2.5.4 Profit function

$$\begin{aligned} \pi(X,Z) &= pq - C(q) \\ &= Pf(X,Z) - (\omega X) \dots\dots\dots(5) \end{aligned}$$

Information:

π = profits

p = output price per unit

If $\omega = \omega/p$ means the normalized price of the input variable, then equation (3) can be normalized with the output price so that the output price profit (UOP Profit) becomes:

$$\begin{aligned} \pi/p(X,Z) &= pq - C(q) \\ &= pf(X,Z) - (\omega/vX) \dots\dots\dots(6) \end{aligned}$$

The main requirement for maximizing profit is that the first derivative of the profit function is equal to zero:

$$\pi = p \int \alpha X^\beta Z^\gamma - \omega X$$

$$\partial \pi / \partial X = \beta p \int \alpha X^{\beta-1} Z^\gamma - \omega = 0 \dots\dots (7)$$

$$\beta p \int \alpha X^{\beta-1} Z^\gamma = \omega \dots\dots\dots (8)$$

$$X\beta-1 = [\omega / \beta p \alpha Z\gamma] \dots\dots\dots (9)$$

$$X^* = [\omega / \beta p \alpha Z\gamma]^{1/\beta-1} \dots\dots\dots (10)$$

Equation (8) indicates that the amount of input needed to obtain maximum profit depends on the output price, input price and fixed input. By substituting equations 8 and 1, the optimum output will be obtained as follows:

$$q = \alpha X\beta Z\gamma$$

$$q = \alpha [(\beta \alpha Z\gamma P/\omega)^{1/\beta-1}] \beta Z\gamma$$

$$q = \alpha [(\alpha Z\gamma)^{1/\beta-1} (\beta \cdot P/\omega)^{\beta / 1-\beta} Z\gamma^{1-\beta}]$$

$$q = \alpha^{1/\beta-1} [(\beta \cdot P/\omega)^{\beta / 1-\beta} Z\gamma^{1-\beta}] \dots\dots (11)$$

Equation (11) shows that the optimum amount of output produced to achieve maximum profit depends on output prices, input prices and fixed costs Z. is formulated as:

$$X^* = X^*(p, \omega, Z) \dots\dots\dots (12)$$

By substituting equations (10) and (11) into the profit function, then the maximum profit becomes:

$$\begin{aligned} \pi^* &= p[\alpha^{1/\beta-1} [(\beta \cdot P/\omega)^{\beta / 1-\beta} Z\gamma^{1-\beta}] - \omega[\alpha\beta Z\gamma \cdot v/\omega]^{1/1-\beta}] - \\ &= p[\alpha^{1/\beta-1} \beta^{\beta / 1-\beta} \cdot (P/\omega)^{\beta / 1-\beta} Z\gamma^{1-\beta}] - \\ &\quad \omega[\alpha^{1/\beta-1} \beta^{1/\beta-1} Z\gamma^{1-\beta} \cdot (v/\omega)^{1/1-\beta}] \\ &= \alpha^{1/\beta-1} \beta^{\beta / 1-\beta} (1-\alpha) Z\gamma^{1-\beta} P^{1/\beta-1} \omega^{-\beta / 1-\beta} \\ &\quad \dots\dots\dots (13) \end{aligned}$$

Equation 13 shows that the maximum profit (π^*) received by farmers depends on the output price (p), input prices (v), and fixed inputs (Z)

The empirical model used in the profit analysis of rice farming is the Cobb-Douglas profit function model with the following equation:

$$\pi_i = v\alpha \omega \beta Z\gamma D_i^\phi \dots\dots\dots (14)$$

To estimate equation (14) and data on the profit distribution and determine which is close to the normal distribution, the equation is transformed into a logarithmic form

$$\ln \pi_i = \ln \lambda + \alpha \ln v + \beta \ln \omega + \gamma \ln Z + \phi D_i + \epsilon_i \dots (15)$$

Information:

π_i = Rice farmer profit (Rp) at planting height < 100 m and (100-500 m), which is normalized

λ = profit function line

V = productivity of rice farming (kg/ha), in the lowlands and medium land

ω = cost of capital (Rp/ha) for farmers in the lowlands and medium land

Z = labor costs (Rp/ha) for farmers in the lowlands and medium land

$D_i = 1$ for farmers in medium land

$= 0$ for farmers in the lowlands

Producer surplus is the difference between the prices of goods that producers can sell and the prices that producers can accept from the number of goods sold. Producer surplus also means the ability of producers to obtain revenue from goods sold at a sacrificed cost. Mathematically, the grain supply equation is made through the Total Cost equation. Generally, the cost function used is a cubed function, so the equation is as follows:

$$TC = C + \beta_1 Q_1 + \beta_2 Q_2 + \beta_3 Q_3 \dots\dots\dots (16)$$

$$MC = \beta_1 + 2\beta_2 Q_1 + 3\beta_3 Q_2 \dots\dots\dots (17)$$

Information:

TC = Total cost (Rp)

MC = Marginal cost (Rp)

C = Constanta

Q = amount of grain production (kg)

Because the marginal cost is equal to the supply, the supply equation is the same as equation (17). Maximum profit is achieved when price (P) equals marginal cost ($P=MC$).

Calculating the amount of producer surplus will use the following equation:

$$SP = \delta TR - \delta TC \dots\dots\dots (18)$$

$$SP = MR - MC$$

$$SP = \frac{1}{2} \int (MR - MC) * Q$$

$$SP = \frac{1}{2} \int (P - MC) * Q \dots\dots\dots (19)$$

Information:

SP = producer surplus (Rp)

TR = P * Q = total revenue

TC = total cost

MR = marginal revenue = P

P = equilibrium price or market price of grain (Rp/kg)

MC = marginal cost

3 Results

3.1 The Effect of Planting Altitude on Rice

Rice production can be influenced by how much the use of production factors is used by farmers. In this study, the production factors used included rice seeds, fertilizers, labor, and the height of the planting site. The results of the regression analysis can explain the estimation of how much use of production factors is used and at what stage of return can be achieved. The estimation results can be shown in Table 1 below:

Table 1. Estimated Factors of Production of Rice Farming in West Lombok Regency 2022

Variables	Unstandardized Coefficients		t	Sig.
	B	std. Error		
(Constant)	-.212	.790	-.268	.790
In Seed Cost	.383	.084	4,572	.000*
In Fertilizer Cost	.198	.070	2,835	.006*
In Labor Costs	.413	.067	6.127	.000*

Altitude Dummy	-.147	048	-	.003*
			3,085	

Dependent variable: In Production
Adjusted R² = 0.956
F = 320.029 *

* shows significance at the 1% level

Source: Primary data analysis

3.2 Empirical Results of Profit Models

Economic theory states that the profit received depends on the amount of income and costs incurred. The results show that the profit for rice farmers in the lowlands is higher than that of farmers in the medium land. The profit of farmers in the lowlands is 41.83% greater than rice farmers in the medium land and the difference is significant with a p-value of 0.000 (Table 2).

The high profit of rice farmers in the lowland areas is due to higher revenues compared to farmers in the medium land. The income of farmers in the lowlands is 33.14% greater than that of rice farmers in the medium land and the difference is significant at a p-value of 0.000 (Table 2). The high income of farmers in the lowlands is due to the productivity and selling price of grain, even though the capital costs and labor costs are higher than those of farmers in the medium land.

Table 2. Profits from rice farming per hectare in West Lombok Regency, 2022

No	Items	Rice Farmers		t-stat	p-values
		Lowland	Middle Land		
1.	Profit (Rp/ha)	17,901,11	12,621,16	-8,243	0.000
2.	Revenue (IDR/ha)	1	5	-9,448	0.000
3.	Productivity (kg/ha)	26,980,22	20,264,41	3	1
					- 0.000
					10,229

4.	Capital Cost (IDR/ha)	6,889	5.194	11083	0.000	No Explanatory Variables	Farmer Profit Function		
							Lowland Land	Middle	Combine d
5.	Labor Costs (IDR/ha)	1,379,869	2,437,595	-9,064	1 0.000	Intercepts	11036 (0.742)*	13,402 (2,952) *	9,627 (1,660)*
		7,297,152	4,970,035		2	Productivity (ln X1)	1,496 (0.059)*	1931 (0.243) *	1,540 (0.138)*
					3	Cost of Capital inputs (ln X2)	-0.004 (0.020)	-0.552 (0.152) *	-0.125 (0.061)* *
					4	Cost of Labor input (ln X3)	-0.476 (0.046)*	-0.356 (0.112) *	-0.302 (0.079)*
					5	Dummy of Planting Height	-	-	0.028 (0.061)
Adjusted R ²							0.957	0.676	0.836
F Calculate							214,294 *	21.174 *	76,296*
Number of Observations							30	30	60

Source: Primary data analysis

The results show that the productivity of rice in the lowland areas is higher than that of rice farming in the medium land. The productivity of rice in the lowland areas is 32.63% greater than rice farmers in the medium land and the difference is significant with a p-value of 0.000 (Table 2). The average selling price of grain per kilogram received by farmers in the lowland areas is IDR 3,917, while for farmers in the medium land it is IDR 3,897 per kg.

In general, the results show that the average cost of capital incurred for rice farmers in the lowland areas is lower than that of farmers in the medium land. The cost of capital for farmers in the lowlands is 43.39% lower than rice farmers in the medium land and the difference is significant with a p-value of 0.000 (Table 2).

The results show that the labor cost for rice farmers in the lowland areas is higher than that of farmers in the medium land. value 0.000 (Table 2).

The Effect of Planting Altitude on Rice Farming Profits to test the hypothesis that there is an effect of planting height on the profit of rice farming, a statistical test of the profit function was carried out for groups of farmers in the lowlands and groups of farmers in the medium land, and a combination of farmer groups in the dummy variable. Testing the influence of productivity variables, capital costs, and labor costs on profits is made using the Cobb-Douglas profit function regression model which is summarized in Table 3.

Table 3. Estimated Profits Earned by Rice Farming in Lowland and Middle Land in West Lombok Regency, 2022

Source: Profitability model analysis of two growing altitude areas and their combination in one analysis package shown from t-test statistics

** indicates the statistical significance of 5%

* shows the statistical significance of 1% The dependent variable is ln Profit (π /ha).

3.3 Producer Surplus Analysis

Producer surplus is one measure to assess the welfare of producers or farmers. The producer surplus is very dependent on the production per hectare of rice or the level of productivity and the difference between the market price of grain and the

minimum price of grain that producers are still able to accept. The results of the study (Table 4.) can explain that the average productivity of rice yields in the two lands is very different where in the lowlands it is 32.63% greater than rice farmers in the medium land and the difference is significant with a p-value of 0.000 (Table 2). Next, the difference in productivity with Break Even Point Production is quite large, where in the lowland areas the difference in production is 3539 kg/ha or 108% and in the medium land it is 2202 kg/ha or 73.57%.

Table 4. Producer Surplus of Rice Farmers in West Lombok Regency in 2022

No	Items	Rice Farmers		Combi- nation
		Lowland	Middle Land	
1	Grain Market Price (IDR/kg)	3,917	3,897	3,907
2	Production Break-Even Point (kg/ha)	3,270	2,993	3,316
	Average Productivity (Kg/Ha)			
3	Producer Surplus (IDR1.000)	6,889	5,194	6,042
4		12,481	6,555	9,625

Source: Primary data analysis

4 Discussion

The overall test results (Table 1) show that all independent variables (seeds, fertilizers, labor and altitude) jointly affect rice production. This

information can be seen from the F value of 320,029 which is significant at the 99% confidence level or 1% error level. Also, the value of Adjusted $R^2 = 0.956$, which means that 95.6% of the variation in the dependent variable (rice production) can be explained by the independent variables (seed costs, fertilizer costs, labor costs, and altitude). It also means that all of these independent variables affect rice production in West Lombok Regency. In line the results of research [19] stated that all independent variables such as seeds, fertilizers, labor jointly affect rice production in Central Sulawesi, Indonesia.

Partial testing (Table 1) through the t-test found the estimation results of the four independent variables, namely all of these variables had a significant effect on rice production. To find out how much influence each independent variable has, it can be explained in the following explanation.

The cost of rice seeds, all the respondent farmers planted the Inpari 32 rice variety. Statistically the estimated results of the regression coefficient were 0.383 with a significant level of 0.000 (probability). This means that the variable cost of seeds has a significant effect on rice production, where each additional 1% of seed costs will increase rice production by 0.383%. However, if you look at the magnitude of the regression coefficient, the magnitude is still less than 1, this means that there are still opportunities for farmers to increase the use of seeds to achieve optimal production results. The results of research [20] state that the cost of rice seeds has a significant effect and has a positive contribution to rice production in irrigated land in Isabela Province, Philippines.

Fertilizer costs. Statistically, the estimated regression coefficient is 0.198 with a significant level of 0.006 (probability). This means that the variable cost of fertilizer has a significant effect on rice production, where every 1% additional cost of fertilizer will increase rice production by 0.198%. However, if you look at the magnitude of the regression coefficient, the magnitude is still less than 1, this means that there is still an opportunity for farmers to increase the use of

fertilizers to achieve optimal production results. In accordance with the results of research [19] stated that fertilizer inputs had a significant effect on rice production in Central Sulawesi.

Labor Costs. Statistically the estimated results of the regression coefficient are 0.413 with a significant level of 0.000 (probability). This means that the labor cost variable has a significant effect on rice production, where every 1% increase in labor costs will increase rice production by 0.413%. However, if you look at the magnitude of the regression coefficient, the magnitude is still less than 1, this means that there are still opportunities for farmers to increase the use of labor to achieve optimal production results. In line with the results of research [20] which states that labor costs have a significant effect and have a positive contribution to rice production in irrigated land in the Province of Isabela Philippines.

Planting Height, Statistically the estimated results of the regression coefficient are -0.147 with a significant level of 0.003 (probability). This means that the variable height of the planting area has a significant effect on rice production, where the medium land produces rice production 0.147 times lower than the lowland areas. It also means that higher areas where rice is planted produce lower rice production. According to the results of research [6] that the number of productive tillers and grain filling in the highlands is lower than the lowlands.

The regression model for the profit function for rice farmers in Table 3 shows that the value of the coefficient of determination R^2 for farmers in the lowland region is 0.957 and for farmers in the medium land region is 0.676, and the combination in both regions is 0.836. This means that 95.70% of the variation in profits for farmers in the lowlands is then 67.60% of the variation in profits for farmers in the medium land, and 83.36% of the variation in profits for farmers in the two highlands can be explained by explanatory variables such as productivity of rice farming, capital costs, costs labor, and the height of the planting site. This means that there are 4.30% for farmers in the

lowlands, 32.40% for farmers in the medium land.

Based on the results of the t-test or partial test, most of the variables included in the regression model have a significant effect on the profits of rice farming in West Lombok Regency. In addition to the significance seen, it is also necessary to pay attention to the magnitude and sign of the regression coefficient.

First, the productivity variable has a positive sign with a magnitude of more than 1. This means that every 1% increase in rice productivity will increase profits by 1.49% for groups of farmers who are in the lowland areas, then 1.391% for groups of farmers who are in the medium land. and 1,540% for the combination of the two regions. This means that the increase in productivity provides an increase in profits from rice farming which is more responsive or the elasticity is more than 1 and can be classified as elastic. This increase in productivity can be due to the use of production facilities in a balanced way, such as the use of Inpari 32 rice seeds, urea, ponska, and ZA.

Both capital cost variables are negative with a magnitude of less than 1. This means that a 1% increase in the cost of capital will reduce profits by 0.004% for the lowlands, and 0.552% for the medium land, and 0.125% for the combination of the two regions. The variable response of capital input costs for the medium land region is greater than that for the lowland areas for the profit of rice farming. When compared to the average costs incurred by farmers for rice seeds and fertilizers, the average capital cost of the farmer group in the medium land is higher than that of the farmer group in the lowlands, which is IDR 329,667 compared to IDR 308,000 (the cost of rice seeds) and IDR 1,301,008.- compared to IDR 553,583.- (for the cost of fertilizer). There are allegations that excessive use of fertilizer costs at high prices has caused capital input costs to increase even more. The results of the study [22] state that the capital cost factor has a significant effect on rice farming income in Rwanda. The results of the study [23] state that the cost of capital or production facilities has a significant

effect on the income of rice farmers in Gowa Regency, Indonesia.

Third for variable labor costs, where the magnitude is less than 1 with a negative sign. This means that every 1% increase in labor input costs will reduce rice farming profits by less than 1%, namely 0.476% for the lowland areas, and 0.356% for the medium land regions and 0.079% for the combination of the two regions. This means that the use of labor in the lowlands is more than in the medium land so that the response to profits is greater. The results of the study [22] state that the labor cost factor has a significant effect on the income of rice farming in Rwanda.

The four variables are the height of the rice planting area, where the magnitude is less than 1 with a positive sign, meaning that in the medium land the response is 0.028 times greater than in the lowland areas to the profit of rice farming. However, this height variable does not significantly influence the profit of rice farming. This means that the profit of rice farming does not require a special place because what determines profit is the quantity of production and the selling price of grain. The price of grain in the two regions is different where the price of grain received by farmers in the lowland areas is an average of IDR 3,916.67 per kilogram while in the medium land the average is IDR 3,896.67 per kilogram. This price difference is not too big (the results of the t-test on grain prices show a significance value of 0).

The difference in the price of grain received by farmers in the two regions is caused by first, most farmers in the medium land area sell grain with relatively lower quality, namely the grain moisture content is still relatively high, secondly, producers are dealing with several wholesalers so that the bargaining position of farmers is still weak. Third, at harvest time most farmers need money for household needs, for example for children's education, health, and social activities. In line with the opinion [8] which states that in general farmers have characteristics in marketing results where the bargaining position of rice farmers tends to be weak, because: generally farmers sell rice immediately after harvest in the form of dry grain harvest and even by slashing, farmers are faced with the need for cash for the cultivation of land in

the next period, Therefore, the added value from post-harvest is mostly enjoyed by traders, and rice supply is not elastic and the rice market is segmented locally. Then what often becomes a problem is the low quality of grain that is sold due to the high-water content due to cloudy weather which often occurs during the rainy season. The price range for grain received by farmers is between IDR 3,500/kg to IDR 4,100/kg in the medium land area. Meanwhile, farmers in the lowlands sell unhulled rice at prices ranging from IDR 3,900/kg to IDR 4,000/kg. Then what often becomes a problem is the low quality of grain that is sold due to the high-water content due to cloudy weather which often occurs during the rainy season. The range of grain prices received by farmers is between IDR 3,500/kg to IDR 4,100/kg in the medium land area. Meanwhile, farmers in the lowlands sell unhulled rice at prices ranging from IDR 3,900/kg to IDR 4,000/kg. Then what often becomes a problem is the low quality of grain that is sold due to the high-water content due to cloudy weather which often occurs during the rainy season. The range of grain prices received by farmers is between IDR 3,500/kg to IDR 4,100/kg in the medium land area. Meanwhile, farmers in the lowlands sell unhulled rice at prices ranging from IDR 3,900/kg to IDR 4,000/kg.

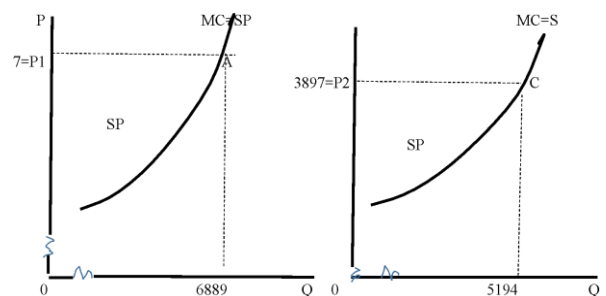


Fig. 3. Producer Surplus (SP) in the lowlands

Fig. 4. Producer Surplus (SP) in the midland

To plan rice farming that provides maximum profit, farmers must be able to calculate the return point for farming or it is called the Break Even point, where at this point it will be seen how far the farmer will estimate the profit to be obtained. The results of the Production Break Even Point analysis are shown in Table 4. The Break Even Point of Production in the lowland areas is higher than in the medium land, but the difference is not too stark. The results showed

that the productivity of rice produced by farmers was still above the break even point, this meant that farmers were able to generate revenue and income from the costs that were sacrificed. In other words, from the socio-economic size, farmers have been able to generate sufficient profits to carry out farming socio-economic activities at a later time, and this can be categorized as farmers who have achieved prosperity. In line with the results of research [23] which states that the level of welfare of farmers in narrow, medium and large areas has achieved a high level of welfare seen from socio-economic indicators or the Central Bureau of Statistics.

So based on the previous description it can be seen that the producer surplus in the two regions is very different where the producer surplus in the lowland region is higher than that in the medium land region. This shows that farmers in the lowlands are more prosperous than farmers in the medium land. The magnitude of this producer surplus can be interpreted as the government's success in establishing a policy to increase rice production and at the same time the welfare of rice farmers through several policies including the policy of subsidizing the price of urea fertilizer, increasing the purchase price of grain for farmers, increasing the area of rice planting areas, and increasing irrigation areas. Besides, from the side of the farmers themselves also have a role in improving their welfare such as how to manage farming well starting from preparing rice seeds, maintaining planting, fertilizing properly, up to harvest handling. In line with the results of research [24] stated that the capacity of farmers affects the welfare of farmers, namely about the abilities of farmers themselves such as cultivation techniques, capabilities from seeding, seeding, planting, weeding, fertilizing to handling plant pests. It was also said [25] that a combination of government policies through policies to increase irrigation areas, increase the purchasing price of farmers' grain, increase the rice planting area, and decrease the price of urea fertilizer, led to a larger producer surplus. The results of the study [26] also stated that the level of welfare of paddy rice farming households as a whole or on average in narrow, medium.

5 Conclusions

Producer surplus analysis model $\frac{1}{2}[(P-MC)*Q]$ can be used as a measurement of the welfare level of paddy rice farming households. The welfare level of rice farming households in the lowland areas is higher than that of lowland rice farming households in the medium land areas. In measuring the welfare level of paddy rice farming households, the $\frac{1}{2}$ equation model can be used $\frac{1}{2}[(P-MC)*Q]$.

There is evidence that the height of the lowland rice cultivation has a significant effect on lowland rice production. The productivity of lowland rice farming in the lowlands is higher than the productivity of lowland rice farming in the medium land. The results of this study recommend that the government prevent land conversion from agriculture to non-agriculture in lowland areas, preferably housing and industrial development locations on unproductive land.

Acknowledgment

Thank you to the Head of the Research and Community Service Institute at the University of Mataram for financial support, and thanks to the Head of the West Lombok District Agriculture Office for facilitating the data collection process.

References

参考文献

- [1] UTAMI, SILMI NURUL. Impact of the conversion of agricultural land into industrial land. Kompas.com.2021. <https://www.kompas.com/skola/read/2021/12/24/185858869/dampak-konversi-lahan-pertanian-jadi-lahan-industri?page=all> .
- [2] HIDAYAT, Y., ISMAIL, A., EKAYANI, M. The impact of agricultural land conversion on the household economy of rice farmers (case study in Kertajati district, Majalengka regency, West Java). Agricultural Technology Assessment and Development Journal, Agricultural Research and Development Agency. 2017, 20(2), 171–182.
- [3] ERNAWATI, ANDRESWARI, D., ALEXANDER, T. Land suitability prediction model for food crops with backpropagation neural network (case study: Bengkulu Hilir Sub-Das). Pseudocode Magazine. 2020, 7(1), 35-40
- [4] LI, YUEJIAU., X. YANG, H. CAI, L. XAO, X. XU AND L. LIU. Topographic features of agricultural potential productivity during the transformation of farmland in China. Sustainability, 2015, 7(1), 96-110.
- [5] NATIONAL LAND AGENCY OF WEST LOMBOK REGENCY (2021). West Lombok Regency Surveying, 2021.
- [6] GUO, L., M. LIU, Y. ZHANG, Y. TAO, F. ZHANG, G. LI, K. DITTERT AND S. LIN. Yield differences increase with ascending altitude between traditional paddy-rice production systems and water-saving mulch rice production systems. European Journal of Agronomy. 2017, 92, 9-16.
- [7] AZIS A., SUNARMINTO, BH, RENANTI, MD. Assessing the suitability of land for growing food crops using artificial neural networks. MIPA Gajah Mada University Periodical Magazine. 2006, 16(1):1-10.
- [8] GENERAL DIRECTORATE OF FOOD CROPS. Technical Instructions Seed Subsidy Year 2017. Ministry of Agriculture. 2017, 1-31
- [9] SINGH, R.P and AGRAWAL, R.C. Improving Seed System Efficiency by Seizing Farmers' Rights in India by Adopting and Implementing Quality Declared Seed System Policies in Parallel. MOJ Ecology and Environmental Sciences, 2018, 3(6),387-391
- [10] MINISTER OF TRADE OF THE REPUBLIC OF INDONESIA. Acquisition and Distribution of Subsidized Fertilizers for the Agricultural Sector. Regulation of the Minister of Commerce Number 4 of 2023. 2023, 1-27
- [11] NUGROHO, AD, SIREGAR, AP, ANDANNARI, E., SHAFIYUDIN, Y., CHRISTIE, J.I. The distribution of subsidized fertilizers in Bantul Regency, special region of Yogyakarta province. AGRISOCIONOMICS Magazine of Agricultural Socioeconomics. 2018, 2(1): 70-82
- [12] MAULANA, M., AND RACHMAN, B. Government rice purchase price in 2010: its effectiveness and implications on DOLOG's rice purchase. Journal of Agricultural Policy Analysis. 2011, 9(4), 331-347

- [13] BROTHER, SAPTANA. Rice pricing policy revised from the dimensions of price endings. *Journal of the Agroeconomic Research Forum*, 2017, 35(1): 31–43.
- [14] SUPARMIN, ZAINI, A., SIDDIK, M., TAJIDÁN. The effectiveness of the government's purchase price policy for paddy and rice as a price stabilization tool on the island of Lombok, West Nusa Tenggara. *Agricultural Policy Analysis Journal*. 2022, 20(2), 147-159
- [15] RONALD S. BADU., SITI PRATIWI HUSAIN. Farm Accounting: Net Farm Income Farmers Welfare. *International Journal of Innovative Science and Research Technology*, 2021, 6(9), 361-369
- [16] CENTRAL BUREAU OF STATISTICS FOR THE WEST LOMBOK REGENCY. West Lombok Regency in figures, 2016.
- [17] SADOULET, E. AND DE JANVRY, A. Quantitative Analysis of Development Policy The Johns Hopkins University Press. 1995, 61-63
- [18] SUHARYANTO, MAHAPUTRA, ARYA. Relative Economic Efficiency of Lowland Rice Crop Using the Profit Function Approach in the Field School Integrated Crop Management Program in Bali Province. *Agricultural Informatics*, 2015, 24 (1): 59 – 66
- [19] MUHARDI AND EFENDIA. Technical Efficiency and The Factors Affecting It In Rice Production In Indonesia. *Asian magazine of agricultural and rural development*. 2021, 11(3): 230-235
- [20] CANETE, D.C., TEMANEL, B.E. Factors influencing productivity and technical efficiency of rice farmers in Isabela, Philippines. *Journal of Advanced Agricultural Technologies*, 2017, 4(2): 111–122.
- [21] WILUJENG, E.D. and FAUZIAH, E. Technical efficiency and factors influencing rice production in Lamongan Regency. *Agroscience Magazine*. 2021, 1(3): 712-727.
- [22] NGANGO, JULES. Does empowering women improve yields and income? Evidence from rice farmers in Rwanda. *Asian magazine of agricultural and rural development*. 2022, 12(3): 201-209.
- [23] ALFRIDA, A., NOOR, T.I. Analysis of Income and Welfare Level of Rice Households Based on Area. *Agroinfo Galuh*. 2017, 4(3), 426-433
- [24] SULISTIYAWATI, R., KUSRINI, N., IMELDA. Influence of Farmer Characteristics and Management Capacities on the Welfare of Rice Farmers. *Magazine of economic development analysis*. 2021, 4, 403-412
- [25] MULWANYI, A., HUTAGAOL, P., SINAGA, B.M. Impact of rice purchasing policy on the welfare of producers and consumers in Indonesia. *International Society for Agricultural Sciences of Southeast Asia (ISSAAS)*. 2011, 17(2), 48-57
- [26] PUTRI, CK, NOOR, T.I. Analysis of Income and Welfare Level of Rice Farming Households Based on Land Area in Sindangsari Village, Banjarsari District, Ciamis District, West Java Province. *Agroinfo Galuh Magazine*. 2018, 4(3), 927-935
- [27] PRATAMA, N., ZULFANETI, UMIYAT, E. Welfare analysis of rice farmers in Warm Water District East Kerinci Regency. *Economic Paradigm Magazine*. 2021, 6(4), 705-716
- [28] GEORGE T, MARKUS J. Explanatory research: definition, guide, & examples. Scribbr Publisher, 2022. <https://www.scribbr.com/methodology/explanatory-research/>

COVER LETTER

Title of the manuscript: The Surplus Producer as a Measure of Household Welfare Levels in Rice Crops: A Case Study of Rice Cultivation in Low and Medium Lands
Abstract: The objective of the study is to find the appropriate surplus producer analysis model to measure farmer family welfare levels in paddy rice fields in the low and medium land. The study was implemented in Indonesia with the lead location of low and medium lands of rice fields on the island of Lombok. Low land rice fields are represented in Kediri district while medium lands rice fields are represented in the Narmada district. In each district, it has been chosen 30 rice farming units, then the number of sampling units were 60 rice farming units rice field. Data was collected using observation, survey, and interview where the respondents are farmers of paddy rice fields. Data analyzed using improvement profit function to become surplus producer function. This study showed that the appropriate model of analysis of the surplus of the producer as measurement level family well-being farmer paddy rice field is $\frac{1}{2} (P - MC) * Q$. This model can be applied to rice paddy agriculture such as rice paddy farmer household welfare level in the low land higher than in the middle land.
Keywords: household, rice, farmers, agriculture

a. Type of manuscript (please specify):

- Research article
 Research communication
 Review article

Full name and address of the Corresponding author: Suparmin Jinem, Faculty of Agriculture, University of Mataram, Mataram, Post Code: 83124, Indonesia	
Telephone# +62370621435	WhatsApp#+628179844697
Email: suparminjinem@gmail.com	

- I hereby confirm that the manuscript was prepared in accordance with the instructions for authors of scientific publications, and that the content of this manuscript, or most of it, was not published in the journal indicated, and the manuscript was not submitted for publication elsewhere.
- I hereby confirm my consent to pay the Article Processing Charges (APC) EUR 400 in the case of the manuscript acceptance for publication. I am aware and hereby confirm that the APC is non-refundable.
- I hereby confirm my consent to make all payments for English Language Editing Services (EUR 150).

Signature of the Corresponding author

Mataram, April, 18th 2023

Date

Copyright Agreement

Manuscript title: The Surplus Producer as a Measure of Household Welfare Levels in Rice

Crops: A Case Study of Rice Cultivation in Low and Medium Lands

Full names of all authors: Suparmin Jinem

Fakultas Pertanian Universitas Mataram, Majapahit Street No.62 Mataram, Indonesia, Post Code:
83124

Full name and address of the corresponding author: Tajidan Tajidan

Fakultas Pertanian Universitas Mataram, Majapahit Street No.62. Mataram, Indonesia, Post Code:
83124

Telephone: +62370644189 WhatsApp: +6281917279122 Email: tajidan@unram.ac.id

License Agreement

- (1) ✓ Authors own all the copyright rights for the paper.
- (2) ✓ Submitted manuscript is an original paper.
- (3) ✓ Authors hereby grant the Issues of Nongye Jixie Xuebao/Transactions of the Chinese Society of Agricultural Machinery with an exclusive, royalty-free, worldwide license to email the paper to all who will ask for it.
- (4) ✓ All authors have made a significant contribution to the research and are ready to assume joint responsibility for the paper.
- (5) ✓ All authors have seen and approved the manuscript in the final form as it is submitted for publication.
- (6) ✓ This manuscript has not been published and also has neither been submitted nor considered for publication elsewhere
- (7) ✓ The text, illustrations and any other materials, included into the manuscript, do not infringe any existing intellectual property rights or other rights of any person or entity.
- (8) ✓ The editors of the Issues of Nongye Jixie Xuebao/Transactions of the Chinese Society of Agricultural Machinery, its personnel or the Editorial Board members accept no responsibility for the quality of the idea expressed in this publication.

I am the Corresponding author and have full authority to enter into this agreement.

Full name, affiliation and position: Suparmin Jinem _____

Signature: _____ Date: __ April, 18th 2023 _____

publication and payment

Kotak Masuk

S

Suparmin Jinem

Sel, 18 Apr, 22.41 (17 jam yang lalu)

Dear editors Thank you for trusting the journal Nongye Jixie Xuebao for accepting our article entitled SURPLUS PRODUCER AS A MEASURE OF HOUSEHOLD WELFARE LEVELS

e

editorialoffice@nyjxxb.net 14.28 (1 jam yang lalu)

kepada saya

Dear Authors,

Thank you for your revision and payment.

Your article will be published in Nongye Jixie Xuebao/ Transactions of the Chinese Society of Agricultural Machinery, Volume 54, Issue 4, 2023 until May 30, 2023

Wish you good health and a nice day!

Sincerely,

Editor-in-Chief: Prof. Ren Luquan (主编: 任露泉)

<http://nyjxxb.net>

Sponsored by: Chinese Society for Agricultural Machinery (CSAM) and Chinese Academy of Agricultural Machinery Sciences (CAAMS).

Address: No.1 Beishatan, Deshengmenwai, Beijing , P.R. China Postd code: 100083.

E-mail: editorialoffice@nyjxxb.net

Satu lampiran • Dipindai dengan Gmail

Research article

Rural management and agricultural development: Trade

The Surplus Producer as a Measure of Household Welfare Levels in Rice Crops: A Case Study of Rice Cultivation on Low and Medium Lands

Suparmin Jinem¹, Tajidan Tajidan²

(1. Faculty of Agriculture, University of Mataram, Mataram, 83124, Indonesia; 2. Master's Study Program in Agribusiness, University of Mataram, Mataram, 83124, Indonesia)

Abstract: The objective of this study is to find an appropriate surplus producer analysis model to measure farmer family welfare levels in paddy rice fields on low and medium lands. The study was implemented in Indonesia with the lead location of low and medium lands of rice fields on Lombok Island. Low-land rice fields are represented in Kediri district, while medium-land rice fields are represented in Narmada district. In each district, 30 rice farming units were chosen; the number of the sampling units was 60 rice farming units. The data were collected using observation, survey, and interviews, where the respondents were farmers of paddy rice fields. Data analyzed using improvement profit function to become surplus producer function. This study showed that the appropriate model of analysis of the surplus of the producer as a measurement of paddy rice field farmer family well-being is $\frac{1}{2} \int (P - MC) * Q$. This model can be applied to rice paddy agriculture such as rice paddy farmer household welfare level on the low land higher than on the middle land.

Keywords: household; rice; farmers; agriculture

过剩生产者作为水稻作物家庭福利水平的衡量标准：中低地水稻种植的案例研究

Suparmin Jinem¹, Tajidan Tajidan²

(1. 马塔兰大学农学院, 马塔兰, 83124, 印度尼西亚)

(2. 马塔兰大学农业企业硕士项目, 马塔兰, 83124, 印度尼西亚)

摘要:

本研究的目的是找到一个合适的剩余生产者分析模型来衡量中低地水稻田农民家庭福利水平。该研究在印度尼西亚实施，主要地点是龙目岛的低中稻田。低地稻田以凯迪里区为代表，而中地稻田则以纳尔默达区为代表。每个区选出30个水稻种植单元；抽样单位数为60个水稻种植单位。这

Received: February 6, 2023 / Revised: March 1, 2023 / Accepted: April 4, 2023 / Published: April 30, 2023

Fund projects: The Head of the Research and Community Service Institute at the University of Mataram

About the authors: Suparmin Jinem (1964), male, lecturer of the Faculty of Agriculture, Mataram University, Indonesia, E-mail:

suparminjinem@gmail.com; Tajidan Tajidan (1959), male, lecturer of Master's Study Program in Agribusiness, Mataram University, Indonesia, E-mail: tajidan@unram.ac.id

Corresponding author: Suparmin Jinem (1964), male, lecturer of the Faculty of Agriculture, Mataram University, Indonesia, E-mail:

suparminjinem@gmail.com

This article is an open-access article distributed under the terms and conditions of the Creative Commons Attribution License (<http://creativecommons.org/licenses/by/4.0>)

些数据是通过观察、调查和访谈收集的，受访者是水稻田的农民。使用改进的利润函数分析数据成为剩余生产者函数。本研究表明，作为衡量水稻田农民家庭幸福感的生产者盈余分析的适当模型是 $\frac{1}{2}[(P - \text{三菱商事}) \cdot Q]$ 。该模型可应用于稻田农业，如低地稻农家庭福利水平高于中地。

关键词：家庭；米；农民；农业

1 Introduction

The decline in the area of agricultural land in Indonesia continues to this day, including in West Lombok Regency. This is because of ongoing industrial and housing development on a large scale. Ironically, this development uses productive agricultural lands. While productive agricultural land is very useful for the provision of food for regional and national residents. ^[1] stated that as reported by the Food and Agriculture Organization of the United Nations, in 2050, it is estimated that there will be an increase of 70% in global food needs. The first impact felt from the conversion of agricultural land into industrial land is reduced food production. The land conversion will make paddy fields and other agricultural land narrower, and agricultural land will automatically become narrower. According to ^[2], conversion of agricultural land can reduce rice production by 12.276 tons/ha/year in Majalengka Regency, West Java. Therefore, development considerations for the industrial and housing sectors should use non-productive land and maintain productive land. Therefore, the consideration of the adjustment of agricultural land for agricultural production in the future is important. The suitability factor of agricultural land for the suitability of various rice varieties and altitude needs to be considered by farmers. According to ^[3], land suitability is the suitability of a land for a particular use, e.g., irrigation, ponds, annual crop farming, or seasonal crop farming. Thus, land suitability for food crops needs information support.

Each plant can grow and adapt to the environment in which it is planted, including the altitude where it is cultivated. Although rice planting must be adjusted to the suitability of the planting site, the rice planting location must be able to produce high rice production. ^[4] classifies the altitude for agriculture into four classes, namely < 100 m, 100–200 m, 200–800 m, and > 800 m. Meanwhile, according to ^[5], the topography of West Lombok Regency, based on altitude, is divided into four: 0-100 m covering an area of 34,800 ha, 100-500 m covering an area of 40,966 ha, 500-1000 m covering an area of 8,650 Ha, and > 1000 m covering an area of 885

Ha. The data show that the area of agricultural land in the lowland areas still dominates, especially in the high-altitude areas (0-100 m and 100-500 m above sea level).

Land use that pays little attention to land suitability class, agroecology, and planting height tends to produce less optimal agricultural business and will even bring losses to farmers because it will use massive production factors to increase soil fertility. This is in line with ^[7], which states that the productivity of food crops depends on the quality of the land used. If the selection of land at the beginning of development does not select productive areas, considerable (financial) losses will occur later. Therefore, the evaluation of land suitability can show the level of land suitability for developing a commodity and economically, the feasibility of farming.

Besides the suitability of agricultural land, paddy rice pre- and postharvest issues also need attention. In the pre-harvest or rice production period, farmers are faced with seed problems (high-yielding varieties). The price of superior rice seeds makes it difficult for farmers to meet production targets. Superior rice varieties will produce high rice productivity. This rice seed problem can be overcome through the implementation of a price subsidy policy for certified rice seeds^[8]. The government cooperates with state-owned enterprises and local breeders in each region in procuring and supplying subsidized certified rice seeds. The indicator of success in this program is the provision, sale and distribution of subsidized rice seeds to farmers or farmer groups. Likewise, ^[9] said that producing superior varieties and distributing them to farmers requires an efficient and effective formal seed system to obtain optimal benefits. Another policy during the pre-harvest period carried out by the government is the fertilizer subsidy policy. The provision of balanced fertilizer on rice plants will provide high production yields^[10]. The government through the Ministry of Trade No. 4 of 2023 has stipulated the procurement and distribution of subsidized fertilizers for the agricultural sector. According to ^[11], the implementation of the distribution of fertilizers to farmers as a whole is quite effective and efficient, but sometimes, the quantity and price are not right and the flow does not comply with the

official provisions set by the government.

The problem during the post-harvest period of rice is that in general the facilities owned by farmers in grain management are still inadequate, such as not having a drying floor and not having grain storage warehouses. This will impact marketing, revenue, and profits for lowland rice farmers. ^[12] states that in general, farmers have characteristics in marketing the results, where the bargaining position of rice farmers tends to be weak. The failure of the local grain market is a strong reason for the need for government intervention in the grain and rice markets. ^[13] stated that the government is very interested in controlling the stability of rice supply and prices for farmers through protective and promotive grain or rice policies, all of which have a direct or indirect impact on their welfare. Therefore, the government has provided support for grain prices or the basic price of grain for farmers every year so that the price of grain received by farmers is not too low.

From the various problems faced by farmers and the implementation of various government policies both during the pre- and post-harvest periods, it will be able to have an impact on the income and welfare that farmers expect. ^[15] stated that the welfare of farmers will be achieved if each farmer can meet the desired rice price target, which can be seen in the desired farmer's net income. Unfortunately, the price of unhusked rice (paddy), which is desired to meet the welfare of farmers, cannot be separated from the "forces" that play in various fields. This is a big problem for farmers because a weak bargaining position makes farmers unable to receive prices that agree with expectations, which can threaten farmers' income and welfare. The problem that arises is whether the suitability of the height of the rice planting area (low and medium land) in West Lombok Regency will result in production, profit, and producer surplus (welfare) for farmers from different lowland rice farming. Therefore, it is necessary to conduct this study.

Its objective was to find an appropriate producer surplus analysis model as a measure of the welfare level of paddy rice farming households in the lowlands and medium land. In particular, this study aims to analyze the differences in production and profit and find differences in the producer surplus of rice farming on the low and medium lands.

The results of this study add to knowledge and make it easier to analyze producer surplus for academics and practitioners in all types of household-scale farming.

2 Materials and Methods

2.1 Research Subject

This research was conducted in West Lombok Regency, West Nusa Tenggara, Indonesia. The research topic was cultivation grown during the 2021/2022 rainy seasons.

2.2 Research Design

The research was designed using an explanatory method, that is, research that explains and relates one variable to another that is different but interrelated and produces a causal relationship^[8].

The main variables that are connected and sought for correlation are the level of production and paddy production factors: profit with productivity, cost of labor, cost of capital, surplus producers, which connect production with paddy price.

The research locations were determined in stages (multistage purposive sampling) ranging from the districts and sub-districts to the village level. The selection of districts was based on the production centers of paddy, thus West Lombok Regency was selected. Additionally, two sub-districts/villages were selected, which cultivate the paddy; each sub-district/village is expected to represent low land (< 100 msl) and middle land (100–500 msl)^[5,16]. The location selection was based on the height of the area and the result of previous research that the altitude of the area affects the production, income, and producer surplus in paddy farming (Fig. 1). On the basis of these considerations, Jagaraga Indah village in Kediri Subdistrict was chosen to represent the lowland area, and Grimax Indah Village in Narmada Subdistrict was chosen to represent the Midland area.

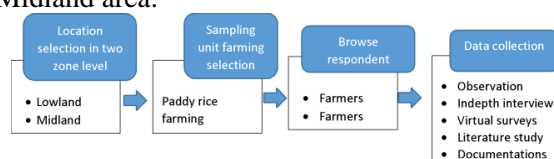


Fig. 1 The research stages

2.3 Research Respondents

Farmers, who were the research object, cultivated paddy during the rainy seasons in 2021/2022 and had experience in cultivating it. Initial information on the paddy farmers was obtained from farmers' groups in each sample village. Then, we randomly selected (random sampling) each 30 respondent farmers with the criteria according to the aforementioned provisions. Therefore, the research obtained 60 respondents.

2.4 Data Collection

The data collection was carried out by combining several methods simultaneously, namely observation, virtual survey, in-depth interview, literature studies, and documentation. Observations were made through direct observation at the location of the farm and where the farmer lives. The survey was conducted by interviewing rice farmers using a list of questions, while in-depth interviews were conducted to verify the data with the documents or records of their farming, documentation activity of farmers in the fields, and collected information from West Lombok District Agriculture Office.

2.5 Procedure for the Data Analysis

Measuring the welfare of lowland rice farmer households through producer surplus starts from measuring production using the Cobb-Douglas production function. Then, the profit of rice farming is measured through the Unit Output Price Cobb-Douglas Profit Function (UOP-CDPF) technique. Finally, we measure the welfare of producers through the measurement of the producer surplus, which is derived from the profit function.



Fig. 2 The stages of producer surplus

2.5.1 Variables and Data Analysis

The data collected from the survey were then edited, tabulated, and analyzed. The analysis model used is:

1) Cobb-Douglas production and profit functions. Yotopoulos and Lau (1979) in ^[17] and ^[18] state that the profit function can be derived using the Unit Output Price Cobb-Douglas Profit Function (UOP-CDPF) technique, with the assumption that producers maximize satisfaction for profits. UOP-CDPF is a function that includes production and factors of production normalized to output prices.

2) Cobb-Douglas Production Function with four independent variables, namely seed costs, fertilizer costs, labor costs, and the dummy variable altitude.

$$q = \alpha X \beta Z \gamma \quad (1)$$

where:

q - output quantity;

X - quantity of the variable input;

Z - quantity of the fixed input;

α - intercept (constant);

β and γ - elasticity of output from input X and Z.

The empirical model of the Cobb-Douglas Production Function in this analysis is shown in the following equation:

$$q_i = \alpha X_i \beta Z_i \gamma D_i^\phi \quad (2)$$

To facilitate the estimation of equation (12) and data on the production distribution and determination of the normal distribution, the equation is transformed into a linear form by making it with logarithms; then, the equation becomes:

$$\ln q_i = \ln \alpha + \beta \ln X_i + \gamma \ln Z_i + \phi D_i + \epsilon_i \quad (3)$$

where:

q_i - paddy production (kg) at altitudes of < 100 m and 100-500 m;

α - constant;

X_i - cost of production factors (seeds, fertilizers, labor) (Rp);

Z_i - fixed costs (Rp);

D_i - 1 for an altitude of 100-500 m and 0 for an altitude of < 100 m.

2.5.2 Receiving Function

$$R = p * q$$

$$R = p * \int \alpha X \beta Z \gamma$$

where:

R - revenue;

p - prices;

q - quantity of production;

X - quantity of the variable input;

Z - quantity of the fixed input;

α - intercept (constant);

β and γ - elasticity of output from input X and Z.

2.5.3 Cost Function

$$C(q) = vZ + wX \quad (4)$$

where:

v - capital rent for fixed input;

w - price of variable input.

2.5.4 Profit Function

$$\begin{aligned} \pi(X, Z) &= pq - C(q) \\ &= Pf(X, Z) - (\omega X) \end{aligned} \quad (5)$$

where:

π - profits;

p - output price per unit.

If $\omega = \omega/p$ means the normalized price of the input variable, then equation (3) can be normalized with the output price so that the output price profit (UOP Profit) becomes:

$$\begin{aligned} \pi/p(X, Z) &= pq - C(q) \\ &= pf(X, Z) - (\omega/vX) \end{aligned} \quad (6)$$

The main requirement for maximizing profit is that the first derivative of the profit function is equal to zero:

$$\begin{aligned} \pi &= p \int \alpha X \beta Z \gamma - \omega X \\ \partial \pi / \partial X &= \beta p \int \alpha X \beta - 1 Z \gamma - \omega = 0 \end{aligned} \quad (7)$$

$$\beta p \int \alpha X \beta - 1 Z \gamma = \omega \quad (8)$$

$$X\beta-1 = [\omega/\beta p] \alpha ZY \tag{9}$$

$$X^* = [\omega/\beta p] \alpha ZY \tag{10}$$

Equation (8) indicates that the amount of input needed to obtain maximum profit depends on the output price, input price, and fixed input. By substituting equations 8 and 1, the optimum output will be obtained as follows:

$$q = \alpha X\beta ZY$$

$$q = \alpha [(\beta \alpha ZY P/\omega) 1/\beta-1] \beta ZY$$

$$q = \alpha [(\alpha ZY) 1/\beta-1 (\beta.P/\omega) \beta / 1-\beta ZY/1-\beta]$$

$$q = \alpha 1/\beta-1 [(\beta.P/\omega) \beta / 1-\beta ZY/1-\beta] \tag{11}$$

Equation (11) shows that the optimum amount of output produced to achieve maximum profit depends on output prices, input prices, and fixed costs Z, which is expressed as

$$X^* = X^*(p, \omega, Z) \tag{12}$$

By substituting equations (10) and (11) into the profit function, the maximum profit becomes

$$\pi^* = p[\alpha 1/1-\beta [(\beta.P/\omega) \beta / 1-\beta ZY/1-\beta] - \omega[\alpha \beta ZY.v/\omega] 1/1-\beta]$$

$$= p[\alpha 1/1-\beta \beta / 1-\beta.(P/\omega) \beta / 1-\beta ZY/1-\beta] - \omega[\alpha 1/1-\beta \beta / 1-\beta ZY/1-\beta .(\omega/\omega) 1/1-\beta]$$

$$= \alpha 1/1-\beta \beta \beta / 1-\beta (1-\alpha) ZY/1-\beta P 1/1-\beta \omega -\beta / 1-\beta \tag{13}$$

Equation 13 shows that the maximum profit (π^*) received by farmers depends on the output price (p), input prices (v), and fixed inputs (Z)

The empirical model used in the profit analysis of rice farming is the Cobb-Douglas profit function model with the following equation:

$$\pi_i = v \alpha \omega \beta ZY D_i^\phi \tag{14}$$

To estimate equation (14) and data on the profit distribution and determine which is close to the normal distribution, the equation is transformed into a logarithmic form

$$\ln \pi_i = \ln \lambda + \alpha \ln v + \beta \ln \omega + \gamma \ln Z + \phi D_i + \epsilon_i \tag{15}$$

where:

π_i - rice farmer profit (Rp) at planting heights of < 100 m and 100-500 m, which is normalized;

λ - profit function line;

V - productivity of rice farming (kg/ha) on the low and medium lands;

ω - cost of capital (Rp/ha) for farmers in the lowlands and medium land;

Z - labor costs (Rp/ha) for farmers in the lowlands and medium land;

D_i - 1 for farmers on the medium lands and 0 for farmers on the low lands.

The producer surplus is the difference between the prices of goods that producers can sell and the prices that producers can accept from the number of goods sold. Producer surplus also means the ability of producers to obtain revenue from goods sold at a sacrificed cost. Mathematically, the grain supply equation is

made through the total cost equation. Generally, the cost function used is a cubed function, so the equation is as follows:

$$TC = C + \beta_1 Q_1 + \beta_2 Q_2 + \beta_3 Q_3 \tag{16}$$

$$MC = \beta_1 + 2\beta_2 Q_1 + 3\beta_3 Q_2 \tag{17}$$

where:

TC - total cost (Rp);

MC - marginal cost (Rp);

C - constant;

Q - amount of grain production (kg).

Because the marginal cost is equal to the supply, the supply equation is the same as equation (17). Maximum profit is achieved when price (P) equals marginal cost (P = MC).

Calculating the amount of producer surplus will use the following equation:

$$SP = \delta TR - \delta TC \tag{18}$$

$$SP = MR - MC$$

$$SP = \frac{1}{2} \int (MR-MC) * Q$$

$$SP = \frac{1}{2} \int (P - MC) * Q \tag{19}$$

where:

SP - producer surplus (Rp);

TR = P * Q = total revenue;

TC - total cost;

MR = marginal revenue = P;

P - equilibrium or market price of grain (Rp/kg);

MC - marginal cost.

3 Results

3.1 The Effect of Planting Altitude on Rice

Rice production can be influenced by how much production factors are used by farmers. In this study, the production factors used included rice seeds, fertilizers, labor, and the height of the planting site. The results of the regression analysis can explain the estimation of how much production factors are used and at what stage the return can be achieved. The estimation results are shown in Tab. 1.

Tab. 1 Estimated Factors of Rice Farming and Production in West Lombok Regency, 2022 (Primary data analysis)

Variables	Unstandardized Coefficients		t	Sig.
	B	Std. Error		
(Constant)	-.212	.790	-.268	.790
In Seed Cost	.383	.084	4,572	.000*
In Fertilizer Cost	.198	.070	2,835	.006*
In Labor Costs	.413	.067	6.127	.000*
Altitude Dummy	-.147	.048	-3,085	.003*

Dependent variable: In Production

Adjusted R² = 0.956

F = 320.029 *

* Significance at the 1% level

3.2 Empirical Results of Profit Models

Economic theory states that the profit received depends on the amount of income and costs

incurred. The results show that the profit of rice farmers in the lowlands is higher than that of farmers in the medium land. The profit of farmers in the lowlands is 41.83% greater than rice farmers on the medium land, and the difference is significant with a p-value of 0.000 (Tab. 2).

The high profit of rice farmers in the lowland areas is due to higher revenues compared to farmers in the medium land. The income of

farmers in the lowlands is 33.14% greater than that of rice farmers in the medium land and the difference is significant at a p-value of 0.000 (Tab. 2). The high income of farmers in the lowlands is due to the productivity and selling price of grain, even though the capital and labor costs are higher than those of farmers in the medium land.

Tab. 2 Profits from rice farming per hectare in West Lombok Regency, 2022 (Primary data analysis)

No.	Items	Rice Farmers		t-stat	p-values
		Lowland	Middle Land		
1.	Profit (Rp/ha)	17,901,111	12,621,165	-8,243	0.000
2.	Revenue (IDR/ha)	26,980,223	20,264,411	-9,448	0.000
3.	Productivity (kg/ha)	6,889	5,194	-10,229	0.000
4.	Capital Cost (IDR/ha)	1,379,869	2,437,595	11083	0.000
5.	Labor Costs (IDR/ha)	7,297,152	4,970,035	-9,064	0.000

The results show that the productivity of rice in lowland areas is higher than that of the rice farming on the medium land. The productivity of rice in the lowland areas is 32.63% greater than rice farmers in the medium land and the difference is significant with a p-value of 0.000 (Tab. 2). The average selling price of grain per kilogram received by farmers in the lowland areas is IDR 3,917, while for farmers on the medium land, it is IDR 3,897 per kg.

In general, the results show that the average cost of capital incurred by rice farmers in the lowland areas is lower than that of farmers on the medium land. The cost of capital for farmers in the lowlands is 43.39% lower than rice farmers in the medium land and the difference is significant with a p-value of 0.000 (Tab. 2).

The results show that the labor cost for rice farmers in the lowland areas is higher than that of farmers on the medium land (value of 0.000) (Tab. 2).

3.3 Effect of Planting Altitude on Rice Farming Profits

To test the hypothesis that there is an effect of planting height on the profit from rice farming, a statistical test of the profit function was carried out for groups of farmers in the lowlands and groups of farmers in the medium land, and a combination of farmer groups in the dummy variable. Testing the influence of productivity variables, capital costs, and labor costs on profits is made using the Cobb-Douglas profit function regression model, which is summarized in Tab. 3.

Tab. 3 Estimated profits earned by rice farming on low and middle lands in West Lombok Regency, 2022 (Profitability model analysis of two growing altitude areas and their combination in one analysis package shown by t-test statistics)

No.	Explanatory Variables	Farmer Profit Function		
		Low Land	Middle Land	Combined
1	Intercepts	11036 (0.742)*	13,402 (2,952)*	9,627 (1,660)*
2	Productivity (ln X1)	1,496 (0.059)*	1931 (0.243)*	1,540 (0.138)*
3	Cost of Capital Inputs (ln X2)	-0.004 (0.020)	-0.552 (0.152)*	-0.125 (0.061)**
4	Cost of Labor Input (ln X3)	-0.476 (0.046)*	-0.356 (0.112)*	-0.302 (0.079)*
5	Dummy of Planting Height	-	-	0.028 (0.061)
	Adjusted R ²	0.957	0.676	0.836
	F Calculation	214,294*	21.174*	76,296*
	Number of Observations	30	30	60

** The statistical significance at 5%

* The statistical significance at 1%. The dependent variable is ln Profit (π /ha).

3.4 Producer Surplus Analysis

The producer surplus is one measure to assess the welfare of producers or farmers. The producer surplus is very dependent on the production per hectare of rice or the level of productivity and the difference between the market price of grain and the minimum price of grain that producers are still able to accept. The results of the study (Tab. 4) can explain that the

average productivity of rice yields in the two lands is very different where in the lowlands it is 32.63% greater than rice farmers in the medium land and the difference is significant with a p-value of 0.000 (Tab. 2). Next, the difference in productivity with production break-even point is quite large, where in the lowland areas the difference in production is 3539 kg/ha or 108% and in the medium land it is 2202 kg/ha or

73.57%.

Tab. 4 Producer surplus of rice farmers in West Lombok Regency, 2022 (Primary data analysis)

No.	Items	Rice Farmers		Combination
		Lowland	Middle Land	
1	Grain market price (IDR/kg)	3,917	3,897	3,907
2	Production break-even point (kg/ha)	3,270	2,993	3,316
3	Average productivity (Kg/Ha)	6,889	5,194	6,042
4	Producer Surplus (IDR1.000)	12,481	6,555	9,625

4 Discussion

The overall test results (Tab. 1) show that all independent variables (seeds, fertilizers, labor, and altitude) jointly affect the rice production. This information can be seen from the F value of 320,029, which is significant at the 99% confidence level or 1% error level. Also, the value of adjusted $R^2 = 0.956$, which means that 95.6% of the variation in the dependent variable (rice production) can be explained by the independent variables (seed costs, fertilizer costs, labor costs, and altitude). This also means that all of these independent variables affect the rice production in West Lombok Regency. In line with ^[19], all independent variables such as seeds, fertilizers, and labor jointly affect rice production in Central Sulawesi, Indonesia.

Partial testing (Tab. 1) through the t-test found the estimation results of the four independent variables, namely all of these variables had a significant effect on rice production. To determine how much influence each independent variable has, it can be explained as follows.

The cost of rice seeds: All the respondent farmers planted the Inpari 32 rice variety. Statistically, the estimated regression coefficient was 0.383 with a significance level of 0.000 (probability). This means that the variable cost of seeds has a significant effect on rice production, where each additional 1% of seed costs will increase rice production by 0.383%. However, if you look at the magnitude of the regression coefficient, the magnitude is still less than 1, which means that there are still opportunities for farmers to increase the use of seeds to achieve optimal production results. ^[20] state that the cost of rice seeds has a significant effect and has a positive contribution to rice production in irrigated land in Isabela Province, Philippines.

Fertilizer costs: Statistically, the estimated regression coefficient was 0.198 with a significance level of 0.006 (probability). This means that the variable cost of fertilizer has a significant effect on rice production, where every 1% additional cost of fertilizer will increase rice production by 0.198%. However, if you look at the magnitude of the regression coefficient, the magnitude is still less than 1, which means that

there is still an opportunity for farmers to increase the use of fertilizers to achieve optimal production results. In accordance with ^[19], fertilizer inputs had a significant effect on the rice production in Central Sulawesi.

Labor costs: Statistically, the estimated results of the regression coefficient are 0.413 with a significance level of 0.000 (probability). This means that the labor cost variable has a significant effect on rice production, where every 1% increase in labor costs will increase rice production by 0.413%. However, if you look at the magnitude of the regression coefficient, the magnitude is still less than 1, which means that there are still opportunities for farmers to increase the use of labor to achieve optimal production results. In line with ^[20], labor costs have a significant effect and have a positive contribution to rice production in irrigated land in the Province of Isabela Philippines.

Planting height: Statistically, the estimated regression coefficient was -0.147 with a significance level of 0.003 (probability). This means that the variable height of the planting area has a significant effect on the rice production, where the medium land produces 0.147 times less rice than the lowland areas. This also means that higher areas where rice is planted produce lower rice production. According to ^[6], the number of productive tillers and grain filling in the highlands is lower than in the lowlands.

The regression model for the profit function for rice farmers in Tab. 3 shows that the value of the coefficient of determination R^2 for farmers in the lowland region is 0.957 and for farmers in the medium-land region is 0.676, and the combination in both regions is 0.836. This means that 95.70% of the variation in profits for farmers in the lowlands is then 67.60% of the variation in profits for farmers in the medium land, and 83.36% of the variation in profits for farmers in the two highlands can be explained by explanatory variables such as productivity of rice farming, capital costs, costs labor, and the height of the planting site. This means that there are 4.30% for farmers in the lowlands and 32.40% for farmers on the medium land.

Based on the results of the t-test or partial test,

most of the variables included in the regression model have a significant effect on the profits from rice farming in West Lombok Regency. In addition to the significance observed, it is also necessary to pay attention to the magnitude and sign of the regression coefficient.

First, the productivity variable has a positive sign with a magnitude of more than 1. This means that every 1% increase in rice productivity will increase profits by 1.49% for groups of farmers in the lowland areas, 1.391% for groups of farmers on the medium land, and 1,540% for the combination of the two regions. This means that the increase in productivity provides an increase in profits from rice farming, which is more responsive or the elasticity is more than 1 and can be classified as elastic. This increase in productivity can be due to the use of production facilities in a balanced way, such as the use of Inpari 32 rice seeds, urea, ponska, and ZA.

Second, capital cost variables are negative with a magnitude of less than 1. This means that a 1% increase in the cost of capital will reduce profits by 0.004% for the lowlands, 0.552% for the medium land, and 0.125% for the combination of the two regions. The variable response of capital input costs for the medium-land region is greater than that for the lowland areas for the profit of rice farming. When compared to the average costs incurred by farmers for rice seeds and fertilizers, the average capital cost of the farmer group in the medium land is higher than that of the farmer group in the lowlands, which is IDR 329,667 compared to IDR 308,000 (the cost of rice seeds) and IDR 1,301,008.- compared to IDR 553,583.- (for the cost of fertilizer). There are allegations that excessive use of fertilizer costs at high prices has caused capital input costs to increase even more. [22] states that the capital cost factor has a significant effect on rice farming income in Rwanda. [23] state that the cost of capital or production facilities has a significant effect on the income of rice farmers in Gowa Regency, Indonesia.

Third, for variable labor costs, the magnitude is less than 1 with a negative sign. This means that every 1% increase in labor input costs will reduce rice farming profits by less than 1%, namely 0.476% for the lowland areas, 0.356% for the medium-land regions, and 0.079% for the combination of the two regions. This means that the use of labor in the lowlands is more than in the medium land, so that the response to profits is greater. [22] states that the labor cost factor has a significant effect on the income of rice farming in Rwanda.

Fourth, regarding the height of the rice planting area, the magnitude is less than 1 with a positive sign, meaning that in the medium land the response is 0.028 times greater than in the lowland areas to the profit of rice farming. However, this height variable does not significantly influence the profit of rice farming. This means that the profit from rice farming does not require a special place because the quantity of production and the selling price of grain determine the profit. The price of grain in the two regions is different, where the price of grain received by farmers in the lowland areas is an average of IDR 3,916.67 per kilogram, while in the medium land the average is IDR 3,896.67 per kilogram. This price difference is not too big (the results of the t-test on grain prices show a significance value of 0).

The difference in the price of grain received by farmers in the two regions is caused by the following:

1) Most farmers in the medium land area sell grain with relatively lower quality, namely the grain moisture content is still relatively high;

2) Producers are dealing with several wholesalers so that the bargaining position of farmers is still weak.

3) At harvest time, most farmers need money for household needs, for example for children's education, health, and social activities. In line with [8], in general, farmers have characteristics in marketing results, where the bargaining position of rice farmers tends to be weak because generally, farmers sell rice immediately after harvest in the form of dry grain harvest and even by slashing; farmers are faced with the need for cash for the cultivation of land in the next period. Therefore, the added value from post-harvest is mostly enjoyed by traders, and rice supply is not elastic and the rice market is segmented locally. Then, what often becomes a problem is the low quality of grain that is sold due to the high water content due to cloudy weather, which often occurs during the rainy season. The price range for grain received by farmers is between IDR 3,500/kg and IDR 4,100/kg in the medium land area. Meanwhile, farmers in the lowlands sell unhulled rice at prices ranging from IDR 3,900/kg to IDR 4,000/kg.

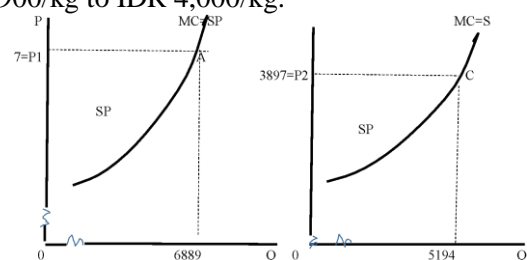


Fig. 3. Producer Surplus (SP) in the lowlands

Fig. 4. Producer Surplus (SP) in the midland

To plan rice farming that provides maximum profit, farmers must be able to calculate the return point for farming or it is called the break-even point, where at this point it will be seen how far the farmer will estimate the profit to be obtained. The results of the production break-even point analysis are shown in Tab. 4. The break-even point of production in the lowland areas is higher than in the medium land areas, but the difference is not too stark. The results showed that the productivity of rice produced by farmers was still above the break-even point; this meant that farmers were able to generate revenue and income from the costs that were sacrificed. In other words, from the socio-economic size, farmers have been able to generate sufficient profits to carry out farming socio-economic activities at a later time, and this can be categorized as farmers who have achieved prosperity. In line with ^[23], the level of welfare of farmers in narrow, medium, and large areas has achieved a high level of welfare observed from socio-economic indicators or the Central Bureau of Statistics.

The previous description shows that the producer surplus in the lowland region is higher than that in the medium-land region. This shows that farmers in the lowlands are more prosperous than farmers in the medium land. The magnitude of this producer surplus can be interpreted as the government's success in establishing a policy to increase rice production and at the same time, the welfare of rice farmers through several policies including subsidizing the price of urea fertilizer, increasing the purchase price of grain for farmers, increasing the area for rice planting, and increasing irrigation areas. Besides, the farmers also play a role in improving their welfare, such as managing farming well from preparing rice seeds, maintaining planting, and fertilizing

properly to harvest handling. In line with ^[24], the capacity of farmers affects the welfare of farmers, namely their abilities such as cultivation techniques, capabilities from seeding, planting, weeding, and fertilizing to handling plant pests. ^[21] said that a combination of government policies through increasing irrigation areas, increasing the purchasing price of farmers' grain, increasing the rice planting area, and decreasing the price of urea fertilizer led to a larger producer surplus. ^[14] also stated that the level of welfare of paddy rice farming households was medium.

5 Conclusions

The producer surplus analysis model $1/2 \int (P-MC) * Q$ can be used as a measurement of the welfare of paddy rice farming households. The welfare of rice farming households in lowland areas is higher than that of lowland rice farming households in medium-land areas. In measuring the welfare of paddy rice farming households, the $1/2$ equation model can be used: $\int (P-MC) * Q$.

There is evidence that the height of lowland rice cultivation has a significant effect on the lowland rice production. The productivity of lowland rice farming in the lowlands is higher than that of lowland rice farming in the medium land. The results of this study recommend that the government prevent land conversion from agriculture to non-agriculture in lowland areas, preferably housing and industrial development locations on unproductive land.

Acknowledgment

We thank the Head of the Research and Community Service Institute at the University of Mataram for financial support and the Head of the West Lombok District Agriculture Office for facilitating the data collection.

References

参考文献

- [1] UTAMI S N. *Impact of the conversion of agricultural land into industrial land*, 2021. <https://www.kompas.com/skola/read/2021/12/24/185858869/dampak-konversi-lahan-pertanian-jadi-lahan-industri?page=all>
- [2] HIDAYAT Y, ISMAIL A, EKAYANI M. The impact of agricultural land conversion on the household economy of rice farmers (case study in Kertajati District, Majalengka Regency, West Java). *Agricultural Technology Assessment and Development Journal*, 2017, 20(2), 171–182.
- [3] ERNAWATI, ANDRESWARI D, ALEXANDER T. Land suitability prediction model for food crops with backpropagation neural network (case study: Bengkulu Hilir Sub-Das). *Pseudocode Magazine*, 2020, 7(1), 35–40.
- [4] LI Y, YANG X, CAI H, et al. Topographic features of agricultural potential productivity during the transformation of farmland in China. *Sustainability*, 2015, 7(1), 96–110.

- [5] NATIONAL LAND AGENCY OF WEST LOMBOK REGENCY. West Lombok Regency surveying, 2021.
- [6] GUO L, LIU M, ZHANG Y, et al. Yield differences increase with ascending altitude between traditional paddy-rice production systems and water-saving mulch rice production systems. *European Journal of Agronomy*, 2017, 92, 9–16.
- [7] AZIS A, SUNARMINTO B H, RENANTI M D. Assessing the suitability of land for growing food crops using artificial neural networks. *MIPA Gajah Mada University Periodical Magazine*, 2006, 16(1), 1–10.
- [8] GENERAL DIRECTORATE OF FOOD CROPS. Technical instructions on seed subsidy. Ministry of Agriculture, 2017.
- [9] SINGH R P, AGRAWAL R C. Improving seed system efficiency by seizing farmers' rights in India by adopting and implementing quality declared seed system policies in parallel. *MOJ Ecology and Environmental Sciences*, 2018, 3(6), 387–391.
- [10] MINISTER OF TRADE OF THE REPUBLIC OF INDONESIA. Acquisition and distribution of subsidized fertilizers for the agricultural sector. Regulation of the Minister of Commerce No. 4 of 2023.
- [11] NUGROHO A D, SIREGAR A P, ANDANNARI E, et al. The distribution of subsidized fertilizers in Bantul Regency, Special Region of Yogyakarta Province. *Agrisociconomics: Magazine of Agricultural Socioeconomics*, 2018, 2(1), 70–82.
- [12] MAULANA M, RACHMAN B. Government rice purchase price in 2010: its effectiveness and implications on DOLOG's rice purchase. *Journal of Agricultural Policy Analysis*, 2011, 9(4), 331–347.
- [13] BROTHER S. Rice pricing policy revised from the dimensions of price endings. *Journal of the Agroeconomic Research Forum*, 2017, 35(1), 31–43.
- [14] PUTRI C K, NOOR T I. Analysis of income and welfare level of rice farming households based on land area in Sindangsari Village, Banjarsari District, Ciamis District, West Java Province. *Agroinfo Galuh Magazine*, 2018, 4(3), 927–935.
- [15] BADU R S, HUSAIN S P. Agricultural accounting: net farm income for farmers' welfare. *International Journal of Innovative Science and Research Technology*, 2021, 6(9), 361–369.
- [16] CENTRAL BUREAU OF STATISTICS FOR THE WEST LOMBOK REGENCY. West Lombok Regency in figures, 2016.
- [17] SADOULET E, DE JANVRY A. Quantitative analysis of development policy. Baltimore, Maryland: The Johns Hopkins University Press, 1995.
- [18] SUHARYANTO, MAHAPUTRA K, ARYA N N. The relative economic efficiency of rice farming using the profit function approach in the field school program-integrated crop management (SLPTT) in Bali Province. *Agricultural Informatics*, 2015, 24(1), 59–66.
- [19] MUHARDI, EFENDIA. Technical efficiency and the factors affecting it in rice production in Indonesia. *Asian Magazine of Agricultural and Rural Development*, 2021, 11(3), 230–235.
- [20] CANETE D C, TEMANEL B E. Factors influencing productivity and technical efficiency of rice farmers in Isabela, Philippines. *Journal of Advanced Agricultural Technologies*, 2017, 4(2), 111–122.
- [21] MULWANYI A, HUTAGAOL P, SINAGA B M. Impact of rice purchasing policy on the welfare of producers and consumers in Indonesia. *Journal of International Society for Southeast Asian Agricultural Sciences*, 2011, 17(2), 48–57.
- [22] NGANGO J. Does empowering women improve yields and income? Evidence from rice farmers in Rwanda. *Asian Magazine of Agricultural and Rural Development*, 2022, 12(3), 201–209.
- [23] ALFRIDA A, NOOR T I. Analysis of income and welfare level of rice households based on area. *Agroinfo Galuh*, 2017, 4(3), 426–433.
- [24] SULISTIYAWATI R, KUSRINI N, IMELDA. Influence of farmer characteristics and management capacities on the welfare of rice farmers. *Magazine of Economic Development Analysis*, 2021, 4, 403–412.
- [1] UTAMI S N. 农业用地转变为工业用地的影响，2021年。 <https://www.kompas.com/skola/read/2021/12/24/185858869/dampak-konversi-lahan-pertanian-jadi-lahan-industri?page=all>
- [2] HIDAYAT Y, ISMAIL A, EKAYANI M. 农业用地转用对稻农家庭经济的影响（西爪哇马贾伦卡摄政区克尔塔贾蒂区的案例研究）。 *农业技术评估与发展*, 2017, 20(2), 171–182.
- [3] ERNAWATI, ANDRESWARI D, ALEXANDER T.

- 具有反向传播神经网络的粮食作物土地适宜性预测模型（案例研究：明古鲁下调）。伪代码杂志，2020年，7(1)，35-40。
- [4] 李勇，杨旭，蔡鸿，等。中国农田改造过程中农业潜在生产力的地形特征。可持续性，2015年，7(1)，96-110。
- [5] 西龙目岛国家土地局。西龙目岛摄政测量，2021年。
- [6] 郭丽，刘敏，张毅，等。传统水稻生产系统与节水地膜稻生产系统之间的产量差异随着海拔高度的升高而增加。欧洲农学杂志，2017年，92，9-16。
- [7] AZIS A, SUNARMINTO B H, RENANTI M D. 使用人工神经网络评估土地种植粮食作物的适宜性。MIPA牙也玛达大学期刊杂志，2006年，16(1)，1-10。
- [8] 粮食作物总局。种子补贴技术指导。农业部，2017。
- [9] SINGH R P, AGRAWAL R C. 通过同时采用和实施质量申报种子系统政策，夺取印度农民的权利，提高种子系统效率。司法部生态与环境科学，2018，3(6)，387-391。
- [10] 印度尼西亚共和国贸易部长。为农业部门采购和分配补贴化肥。商务部长令2023年第4号。
- [11] NUGROHO A D, SIREGAR A P, ANDANNARI E 等。日惹省班图尔摄政的补贴化肥分布情况。农业社会经济学：农业社会经济学杂志，2018，2(1)，70-82。
- [12] MAULANA M, RACHMAN B. 2010年政府大米收购价格：其有效性及其对DOLOG大米收购的影响。农业政策分析杂志，2011年，9(4)，331-347。
- [13] BROTHER S. 米定价政策从价格收尾维度修正。农业经济研究论坛杂志，2017年，35(1)，31-43。
- [14] PUTRI C K, NOOR T I. 西瓜哇省西亚米斯区班贾尔萨里区新当萨里村基于土地面积的水稻农户收入和福利水平分析。农业信息网杂志，2018年，4(3)，927-935。
- [15] BADU R S, HUSAIN S P. 农业核算：农民福利的农场净收入。国际创新科学与研究技术杂志，2021，6(9)，361-369。
- [16] 西龙目岛摄政中央统计局。西龙目岛摄政区数据，2016年。
- [17] SADOULET E, DE JANVRY A. 发展政策的定量分析。马里兰州巴尔的摩：约翰霍普金斯大学出版社，1995年。
- [18] SUHARYANTO, MAHAPUTRA K, ARYA N N. 在巴厘省田间学校项目综合作物管理(SLPTT)中使用利润函数法的水稻种植相对经济效率。农业信息学，2015，24(1)，59-66。
- [19] 穆哈迪，埃芬迪亚。印度尼西亚水稻生产的技术效率及其影响因素。亚洲农业与农村发展杂志，2021，11(3)，230-235。
- [20] CANETE D C, TEMANEL B E. 影响菲律宾伊莎贝拉岛稻农生产力和技术效率的因素。先进农业技术杂志，2017，4(2)，111-122。
- [21] MULWANYI A, HUTAGAOL P, SINAGA B M. 大米采购政策对印度尼西亚生产者和消费者福利的影响。国际东南亚农业科学学会杂志，2011，17(2)，48-57。
- [22] NGANGO J. 赋予女性权力会提高产量和收入吗？来自卢旺达稻农的证据。亚洲农业与农村发展杂志，2022，12(3)，201-209。
- [23] ALFRIDA A, NOOR TI. 基于地区的水稻家庭收入和福利水平分析。农业信息网，2017，4(3)，426-433。
- [24] SULISTIYAWATI R, KUSRINI N, IMELDA. 农民特征和管理能力对稻农福利的影响。经济发展分析杂志，2021，4，403-412。