

Part of **SPRINGER NATURE**

[PROCEEDINGS](#) | [JOURNALS](#) | [BOOKS](#)

---

Search

Series: [Advances in Engineering Research](#)

# Proceedings of the First Mandalika International Multi-Conference on Science and Engineering 2022, MIMSE 2022 (Civil and Architecture)

---

PROCEEDINGS OF THE FIRST MANDALIKA INTERNATIONAL MULTI-CONFERENCE ON SCIENCE AND ENGINEERING 2022, MIMSE 2022 (CIVIL AND ARCHITECTURE)

---



## Constitutive Model of Concrete Frame Structure Under Localized Fire Simulations

### Authors

Suryawan Murtiadi<sup>1, \*</sup>, Made Mahendra<sup>1</sup>, I Dewa Made Alit Karyawan<sup>1</sup>,  
Akmaluddin Akmaluddin<sup>1</sup>, Eko Pradjoko<sup>1</sup>

<sup>1</sup> Master Program of Civil Engineering, Faculty of Engineering, University of Mataram, Mataram, Indonesia

\* Corresponding author. Email: s.murtiadi@unram.ac.id

### Corresponding Author

Suryawan Murtiadi

Available Online 23 December 2022.

### DOI

[10.2991/978-94-6463-088-6\\_8](https://doi.org/10.2991/978-94-6463-088-6_8) [How to use a DOI?](#)

### Keywords

### Abstract

In recent decades, special considerations have been given to the use of fire safety analysis on modern concrete buildings. The considerations include the stability of building which providing sufficient time for the occupants to evacuate and for firefighting. This paper is mainly concerned with the performance of concrete frame structure exposed to localized fire. From the simplified model, load carrying mechanism of concrete frame is identified and several design implications are discussed. Frame model in present analyses constructed of normal-strength reinforced concrete beams and high-strength reinforced concrete columns represented typical commercial office building. All elements of the frame are modeled using 3D tetrahedral coupled-field solid element defined by ten nodes with four degree of freedom. Temperature response predicted from previous researchers and loadings represented total design load at the fire limit state are applied. Constitutive model in a full thermal strain-stress analysis is employed on simple empirical formula. Three-dimensional finite element computer model using ANSYS considering transient effects gave reasonable results. The results indicate that behavior of individual isolated member accommodated by the current codes is different from the behavior of complete structure. Therefore, developing fire engineering analysis from the behavior of complete structures is strongly recommended.

### Copyright

© 2023 The Author(s)

### Open Access

**Open Access** This chapter is licensed under the terms of the Creative Commons Attribution-NonCommercial 4.0 International License (<http://creativecommons.org/licenses/by-nc/4.0/>), which permits any noncommercial use, sharing, adaptation, distribution and reproduction in any medium or format, as long as you give appropriate credit to the original author(s) and the source, provide a link to the Creative Commons license and indicate if changes were made.

 [Download article \(PDF\)](#)



**Volume Title**

Proceedings of the First Mandalika International Multi-Conference on Science and  
Engineering 2022, MIMSE 2022 (Civil and Architecture)

**Series**

Advances in Engineering Research

**Publication Date**

23 December 2022

**ISBN**

10.2991/978-94-6463-088-6\_8

**ISSN**

2352-5401

**DOI**

10.2991/978-94-6463-088-6\_8 [How to use a DOI?](#)

**Copyright**

© 2023 The Author(s)

**Open Access**

**Open Access** This chapter is licensed under the terms of the Creative Commons Attribution-NonCommercial 4.0 International License

(<http://creativecommons.org/licenses/by-nc/4.0/>), which permits any noncommercial use, sharing, adaptation, distribution and reproduction in any medium or format, as long as you give appropriate credit to the original author(s) and the source, provide a link to the Creative Commons license and indicate if changes were made.

**Cite this article**

---

ris

enw

---

TY - CONF  
AU - Suryawan Murtiadi  
AU - Made Mahendra  
AU - I Dewa Made Alit Karyawan  
AU - Akmaluddin Akmaluddin  
AU - Eko Pradjoko  
PY - 2022  
DA - 2022/12/23  
TI - Constitutive Model of Concrete Frame Structure Under Localized Fire Simulations  
BT - Proceedings of the First Mandalika International Multi-Conference on Science and Engineering 2022, MIMSE 2022 (Civil and Architecture)  
PB - Atlantis Press  
SP - 65  
EP - 75  
SN - 2352-5401  
UR - [https://doi.org/10.2991/978-94-6463-088-6\\_8](https://doi.org/10.2991/978-94-6463-088-6_8)  
DO - 10.2991/978-94-6463-088-6\_8  
ID - Murtiadi2022  
ER -

[+ download .ris](#)    COPY TO CLIPBOARD

## Atlantis Press

Atlantis Press – now part of Springer Nature – is a professional publisher of scientific, technical & medical (STM) proceedings, journals and books. We offer world-class services, fast turnaround times and personalised communication. The proceedings and journals on our platform are Open Access and generate millions of downloads every month.

For more information, please contact us at: [contact@atlantis-press.com](mailto:contact@atlantis-press.com)

▶ PROCEEDINGS

▶ ABOUT

▶ JOURNALS

▶ NEWS

▶ BOOKS

▶ CONTACT

▶ POLICIES

▶ SEARCH

▶ MANAGE COOKIES/DO NOT SELL MY INFO

---

[Home](#) [Privacy Policy](#) [Terms of use](#)



Copyright © 2006-2023 Atlantis Press – now part of Springer Nature

Part of **SPRINGER NATURE**

[PROCEEDINGS](#) | [JOURNALS](#) | [BOOKS](#)

---

Search

Series: [Advances in Engineering Research](#)

# Proceedings of the First Mandalika International Multi-Conference on Science and Engineering 2022, MIMSE 2022 (Civil and Architecture)

---

ARTICLES

---

Search

[+ Advanced search](#)

SEARCH

22 articles

---

**Proceedings Article**

## Peer-Review Statements

Buan Anshari, Mohammed Ali Elsageer, Hilton Ahmad, Wen-Shao Chang

All of the articles in this proceedings volume have been presented at the 1st MIMSE 2022 on September 14, 2022 in Mataram, Indonesia. These articles have been peer reviewed by the members of the Scientific Committee and approved by the Editor-in-Chief, who affirms that this document is a truthful description...

[+ Article details](#)

[+ Download article \(PDF\)](#)

---

### Proceedings Article

## Application of the Adaptive Neuro Fuzzy Inference System (ANFIS) to Predict Ultimate Bearing Capacity of Footing on Granular Soil

Ngudiyono, Tri Sulistyowati

The ultimate bearing capacity is an important parameter in the footing foundation design. Several classical methods are often used to analyze the bearing capacity of a footing foundation. However, the results of this analysis always give less accurate results than the experiment. In this manuscript,...

[+ Article details](#)

[+ Download article \(PDF\)](#)

---

### Proceedings Article

## Review on the Rigid Pavement Design for the Tanamori Road in the Labuan Bajo Resort Area of West Manggarai in East Nusa Tenggara Province – Indonesia

I Dewa Made Alit Karyawan, Didi S. Agustawijaya, Ria Restu Marlaninstyas, Made Mahendra, Hasyim, Fera Fitri Salsabila

Tanamori, West Manggarai, East Nusa Tenggara, as a tourism destination area development in Indonesia needs to be supported by the existence of roads as the main means of its development. The road plan is in an area with heavy terrain so it takes a long transportation time. The limited time for completion...

[+ Article details](#)

[+ Download article \(PDF\)](#)

---

### Proceedings Article

# Hydraulic Turbulence Caused by Ship Movement and Slope Stability at the Juncture of Dredging and Reclamation

Sudipta Chakraborty, A. R. Kambekar

For accommodating deep drafted vessels dredging at the vessel maneuvering area to the required depth as well as deepening the berth pocket of the upcoming jetty also became necessary. Improvement of strength of the reclaimed ground became essential to cater to the future loads of container stacks, gantry...

[+ Article details](#)

[+ Download article \(PDF\)](#)

---

## Proceedings Article

# Traffic Management Simulation to Improve Tanah Aji Intersection Road Network Performance

Fera Fitri Salsabila, Desi Widianty, I Dewa Made Alit Karyawan, Hasyim

This paper is prepared to find out alternative traffic management that can reduce congestion on the Road Network at Tanah Aji Intersection. This research method is carried out by collecting primary and secondary data. Primary data includes field surveys, road geometry, traffic flow volume, and traffic...

[+ Article details](#)

[+ Download article \(PDF\)](#)

---

## Proceedings Article

# Comparative Investigations on Reactive Powder Concrete with and Without Coarse Aggregate

Hussein Kareem Sultan, Alaa S. Al-Husainy, Buan Anshari



Crushed dolomite with a nominal size of 8 mm and fine quartz sand with a nominal size of 2 mm were used to produce reactive powder concrete (RPC) this study. The compressive strength is comparable to that of standard RPC with a maximum aggregate size of less than 0.6 mm. The use of crushed dolomite...

[+ Article details](#)

[+ Download article \(PDF\)](#)

---

#### Proceedings Article

### Assessment Factor of Strength Development for Normal, High Strength, and Lightweight Concretes

Ni Nyoman Kencanawati, I Nyoman Merdana, Ngudiyono, Ricko Fachri Afriandi

Development in the construction sector continues to increase. The most common building material nowadays is concrete. Although normal concrete is often is being used, at this time high strength concrete and lightweight concrete have also been widely used in construction. In the codes for concrete materials,...

[+ Article details](#)

[+ Download article \(PDF\)](#)

---

#### Proceedings Article

### Constitutive Model of Concrete Frame Structure Under Localized Fire Simulations

Suryawan Murtiadi, Made Mahendra, I Dewa Made Alit Karyawan, Akmaluddin Akmaluddin, Eko Pradjoko

In recent decades, special considerations have been given to the use of fire safety analysis on modern concrete buildings. The considerations include the stability of building which providing sufficient time for the occupants to

evacuate and for firefighting. This paper is mainly concerned with the performance...

[+ Article details](#)

[+ Download article \(PDF\)](#)

---

#### Proceedings Article

### Review of the 2018 Lombok Earthquake, Indonesia, and Its Impact from Previous Studies

Achmad Fajar Narotama Sarjan, Ismail Hoesain Muchtaranda

A series of strong earthquakes struck Lombok Island on 29 July (M 6.4), 5 August (M 7.0), 9 August (M 5.9), and 19 August (M 6.3 and M. 6.9) 2018 which led to severe damage with more than 500 deaths, 1,833 injured and devastated 186,010 houses (National Disaster Mitigation Agency). Lombok Island is categories...

[+ Article details](#)

[+ Download article \(PDF\)](#)

---

#### Proceedings Article

### Disaster Mitigation Plan Based Flood Event Occurred on January 30th, 2021 in Kuta-Mandalika, Lombok, Indonesia

Atas Pracoyo, Ery Setiawan, Muh. Bagus Budianto, Eko Pradjoko

There was flood event that occurred on January 30th, 2021 in Kuta Mandalika Lombok. There were many infrastructure damages but no injured people were reported. According to information, this January flood is the biggest flood that occurred in Kuta Lombok. The research method consists of is field survey...

[+ Article details](#)

[+ Download article \(PDF\)](#)

---

### Proceedings Article

## The Application of Two Tsunami Inundation Model in the Kuta Mandalika Coast

Eko Pradjoko, Alan Maulana Karisma, Atas Pracoyo, Bambang Harianto, Agus Suroso, Yusron Saadi

The analysis of tsunami inundation is the part of tsunami threat study. In the manual of the Disaster Prevention National Agency (DPNA), the tsunami inundation can be analyzed by the Berryman Method. The method calculates the tsunami wave height reduction when inundating the land based on the surface...

[+ Article details](#)

[+ Download article \(PDF\)](#)

---

### Proceedings Article

## Hybrid Composite Sandwich Panels for Lightweight Housing Components: Concept and Experimental Results

Jauhar Fajrin, Yan Zhuge

Reducing the weight of structures is one of the key factors in maintaining affordable housing costs. The self-weight of a structure, which makes up a significant portion of the total load on a structure, may be decreased by using the appropriate material. Today, a lightweight composite sandwich panel...

[+ Article details](#)

[+ Download article \(PDF\)](#)

---

### Proceedings Article

## The Behavior of Two-Way Sandwich Concrete Slab with Aspect Ratios Variation Subjected to Central Point Load

Akmaluddin Akmaluddin, Suryawan Murtiadi, Ngudiyono, Pathurahman, Suparjo, I Nyoman Merdana

The self-weight of the concrete slab in high-rise building construction significantly affects the risk of structural failure in earthquake-prone areas as the earthquake force is directly proportional to the mass of the building. To reduce the building mass then the sandwich concrete slab is introduced....

[+ Article details](#)

[+ Download article \(PDF\)](#)

---

#### Proceedings Article

### Exploring People's Reasons of Living in Disaster-Prone Area and Promoting Disaster Risk Reduction in Urban Planning

Deffi Ayu Puspito Sari, Citra Ridhani

Cities among other areas bear the brunt of the impact of climate-related disasters, especially cities that are located in the coastal zone. To build resilient cities, it is necessary to involve disaster risk reduction (DRR) in spatial planning (RTRW) because it has an essential role in both mitigation...

[+ Article details](#)

[+ Download article \(PDF\)](#)

---

#### Proceedings Article

### The Influence of Waste Ratio on Waste Consumption Level, Waste Reduction Index, and Growth of Black Soldier Fly Larvae

Deffi Ayu Puspito Sari, Darmono Taniwiryo, Novita Indri Pratiwi, Prisma Nursetyowati, Aqil Azizi, Diki Surya Irawan, Insan Harapan Harahap, Maskur

About 80% of the total amount of waste produced is generally organic waste, which is only seen as residual and has no economic value. Currently, the

problem of organic waste is a problem that must be addressed immediately Black Soldier Fly is one of the solutions. This study aims to determine the...

[+ Article details](#)

[+ Download article \(PDF\)](#)

---

#### Proceedings Article

### Analysis of Building Damage to the Housing Sector Based on Post-North Lombok Earthquake 2018 Investigations

Yaya Fradana, Jauhar Fajrin

A major earthquake with a magnitude of 7.0 on the Richter Scale occurred in the Province of West Nusa Tenggara in 2018. Along with the deaths caused by the earthquake, public infrastructural facilities also sustained significant damage. One of the many losses experienced by the people of West Nusa Tenggara,...

[+ Article details](#)

[+ Download article \(PDF\)](#)

---

#### Proceedings Article

### Stability of the Meninting Diversion-Spillway Tunnel Constructed into Weak Volcanic Rock Masses Influenced by the Lombok Earthquake 2018

Didi S. Agustawijaya, Tri Sulistyowati, Ausa R. Agustawijaya

The Meninting diversion-spillway tunnel is a part of the Meninting dam project located in West Lombok District. The construction commenced in 2017; then, a series of severe Lombok earthquakes halted the construction for a while in 2018, where some landslides occurred around the site. This possibly caused...

[+ Article details](#)

[+ Download article \(PDF\)](#)

---

## Proceedings Article

### Passenger Satisfaction Measurement with a SERVQUAL Approach and Proposed Improvements to Non Bus Rapid Transit (BRT) Transjakarta Services Poris Plawad Route – Senayan Bundaran

Arief Suwandi, Ratri Kartika

Developing countries tend to have problems in the form of people often encountering the phenomenon of congestion. Public transportation is one of the assessments of the quality level of development of an area or country. The government continues to try to unravel the phenomenon of congestion that occurs...

[+ Article details](#)

[+ Download article \(PDF\)](#)

---

## Proceedings Article

### The Implementation of Community-Based Agrotourism Concept as Sustainable Design in Rebakong-Kayangan Village, North Lombok Regency

Rini Srikus Saptaningtyas, Giska Ayu Pradana Putri Kamase, Noor Oktova Fajriyah, Lee Yoke Lai

The tourism sector is one of the main pillars of a productive economy that has enormous potential to give a positive impact extensively. The Government of North Lombok Regency, West Nusa Tenggara Province utilized this sector to improve not only economic aspects but also the impact on social, cultural,...

[+ Article details](#)

[+ Download article \(PDF\)](#)

---

### Proceedings Article

## Study on the Linear Buckling Behaviour of Two Local Bamboo Species Under Different Length and Boundary Conditions via Finite Element Analysis (FEA)

Hazrina Mansor, Mohammad Rosnizam Lop, Buan Anshari

Bamboo is the world's fastest-growing grass species. Although bamboo is a resilient and sustainable engineering material, its use in the building sector has been limited. The limitation in the usage is most likely due to its nature, which might vary depending on the species and origin, creating a challenge...

[+ Article details](#)

[+ Download article \(PDF\)](#)

---

### Proceedings Article

## The Development of the SARIMA Model for Flood Disaster Resilience

Heri Sulistiyono, Faisal Irshad Khan, Humairo Saidah, Ery Setiawan, I Wayan Yasa, I Wayan Suteja, Salehudin, I Dewa Gede Jaya Negara

Some agencies in the world warned that the recent flood disaster has been getting worse all over the world. Engineers have studied flooding and its impact with various simulation models. Yet, there is no model considered the best for all estimations of flood disasters in the future. In this paper, the...

[+ Article details](#)

[+ Download article \(PDF\)](#)

---

### Proceedings Article

## Material Properties and Fracture Energy of Kenaf FRP Composites

Zaim Omar, Sugiman Sugiman, Mustafasanie M. Yussof, Hilton Ahmad

The incorporations of synthetic fibers have raised worrying concerns, so an alternative material which is inexpensive and ecological resources is proposed. Kenaf fiber has high tensile modulus and elongation at break and potentially to be used as reinforcing fibers in FRP composites to replace synthetic...

[+ Article details](#)

[+ Download article \(PDF\)](#)

---

1

## Atlantis Press

Atlantis Press – now part of Springer Nature – is a professional publisher of scientific, technical & medical (STM) proceedings, journals and books. We offer world-class services, fast turnaround times and personalised communication. The proceedings and journals on our platform are Open Access and generate millions of downloads every month.

For more information, please contact us at: [contact@atlantis-press.com](mailto:contact@atlantis-press.com)

- ▶ PROCEEDINGS
- ▶ JOURNALS
- ▶ BOOKS
- ▶ POLICIES
- ▶ MANAGE COOKIES/DO NOT SELL MY INFO
- ▶ ABOUT
- ▶ NEWS
- ▶ CONTACT
- ▶ SEARCH







Part of **SPRINGER NATURE**

[PROCEEDINGS](#) | JOURNALS | BOOKS

---

Search

Series: [Advances in Engineering Research](#)

# Proceedings of the First Mandalika International Multi-Conference on Science and Engineering 2022, MIMSE 2022 (Civil and Architecture)

---

ORGANIZERS

---

## Advisors

**Bambang Hari Kusumo**

University of Mataram, Indonesia

**Arief Kusuma A. P.**

Universitas Esa Unggul, Indonesia

## Chairman

**Nur Kaliwantoro**

University of Mataram, Indonesia

## Vice Chairman

**Heri Wijayanto**

University of Mataram, Indonesia

## **Organizing Committee**

**Jauhar Fajrin**

University of Mataram, Indonesia

**Nurchayati**

University of Mataram, Indonesia

## **Editors**

**Buan Anshari**

University of Mataram, Indonesia

**Mohammed Ali Elsageer**

Sirte University, Libya

**Hilton Ahmad**

Universiti Tun Hussein Onn Malaysia, Malaysia

**Wen-Shao Chang**

University of Sheffield, UK

## **Scientific Committee**

**Mohd Remy Rozainy**

Universiti Sains Malaysia, Malaysia

**Akmaluddin**

University of Mataram, Indonesia

## Atlantis Press

Atlantis Press – now part of Springer Nature – is a professional publisher of scientific, technical & medical (STM) proceedings, journals and books. We offer world-class services, fast turnaround times and personalised communication. The proceedings and journals on our platform are Open Access and generate millions of downloads every month.

For more information, please contact us at: [contact@atlantis-press.com](mailto:contact@atlantis-press.com)

- ▶ PROCEEDINGS
- ▶ JOURNALS
- ▶ BOOKS
- ▶ POLICIES
- ▶ MANAGE COOKIES/DO NOT SELL MY INFO
- ▶ ABOUT
- ▶ NEWS
- ▶ CONTACT
- ▶ SEARCH

---

[Home](#) [Privacy Policy](#) [Terms of use](#)   

Copyright © 2006-2023 Atlantis Press – now part of Springer Nature



# Constitutive Model of Concrete Frame Structure Under Localized Fire Simulations

Suryawan Murtiadi<sup>(✉)</sup>, Made Mahendra, I Dewa Made Alit Karyawan,  
Akmaluddin Akmaluddin, and Eko Pradjoko

Master Program of Civil Engineering, Faculty of Engineering, University of Mataram, Mataram,  
Indonesia

s.murtiadi@unram.ac.id

**Abstract.** In recent decades, special considerations have been given to the use of fire safety analysis on modern concrete buildings. The considerations include the stability of building which providing sufficient time for the occupants to evacuate and for firefighting. This paper is mainly concerned with the performance of concrete frame structure exposed to localized fire. From the simplified model, load carrying mechanism of concrete frame is identified and several design implications are discussed. Frame model in present analyses constructed of normal-strength reinforced concrete beams and high-strength reinforced concrete columns represented typical commercial office building. All elements of the frame are modeled using 3D tetrahedral coupled-field solid element defined by ten nodes with four degree of freedom. Temperature response predicted from previous researchers and loadings represented total design load at the fire limit state are applied. Constitutive model in a full thermal strain-stress analysis is employed on simple empirical formula. Three-dimensional finite element computer model using ANSYS considering transient effects gave reasonable results. The results indicate that behavior of individual isolated member accommodated by the current codes is different from the behavior of complete structure. Therefore, developing fire engineering analysis from the behavior of complete structures is strongly recommended.

**Keywords:** Concrete · Fire · Frame · Stress · Strain

## 1 Introduction

Concrete structures are traditionally seen to have a favorable position in building industry with regard to their performance of fire resistance. So that modern concrete structures may often require special consideration for their fire performance. The special consideration may include the ability of building to fulfill its assigned function in the event of fire as well as the stability of building which provides adequate time for the occupants to escape and for firefighting. In a large and complex building, this tends to be as more important as evacuation of the occupants to escape the building and firefighting operations take much longer [1].

Reference [2] explained that in order to achieve sufficient standard of fire safety and fire performance of structural building construction, there are two principal ways can be applied in the practice. First is the simple application of the building codes and secondly is a fire safety engineering solution. The application of the building codes and standards gives little flexibility and require only a limited engineering approach. The second way gives flexible design ability to achieve a special performance of the building and needs greater skills involving engineering judgment. The integration should be managed from the design, construction, and continued maintenance [3].

Change in materials performance always happen when the structures are exposed to high temperature caused by the changes of structural behavior. Reinforced concrete materials when subjected to fire are anticipated to encounter a loss of strength. The loss of strength may or may not be recovered after cooling. The ability of recovery depends on the materials type, severity of the fire as measured by its temperature, and the duration of the exposure fire [4].

## 2 Structure and Material Model

### 2.1 Concrete Frame

Frame model constructed of normal-strength reinforced concrete continuous beam and high-strength reinforced concrete columns. The frame is assumed to be fixed at the bottom of all columns while the top of columns can move horizontally both in the X and Z and vertically in the Y directions. The frame has 4.00 m height and 21.50 m length which divided by four columns with the distance of each column is 7.50 m. The internal columns have dimension of  $0.40 \times 0.40$  m and the external columns of  $0.25 \times 0.40$  m. The dimension of  $0.40 \text{ m} \times 0.40 \text{ m}$  for the beam is chosen in order to match the performance of the slab behavior. To represent the steel-reinforcement, pairs of 0.01 m thick of steel have been layered longitudinal within the beam and vertical within the internal columns, and the 0.006 m thick are layered within the external columns. The steel layers have been positioned at the distance of 0.04 m from both sides of the top and bottom concrete surfaces. The 0.04 m distances from concrete surfaces represent the concrete cover to the reinforcement. The dimensions of steel layer were used so that the reinforcement ratio of concrete were not exceed to the maximum specified (4%) in the Standards [5–7]. Dimension of the element at concrete frame model in 3-D is illustrated in Fig. 1. And, the typical cross section of internal column as a structural member is presented in Fig. 2.

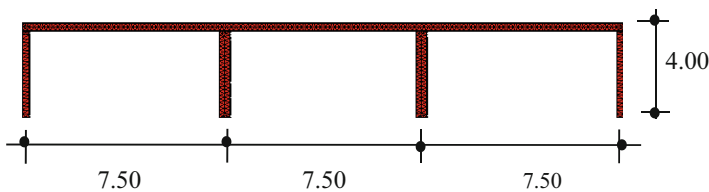
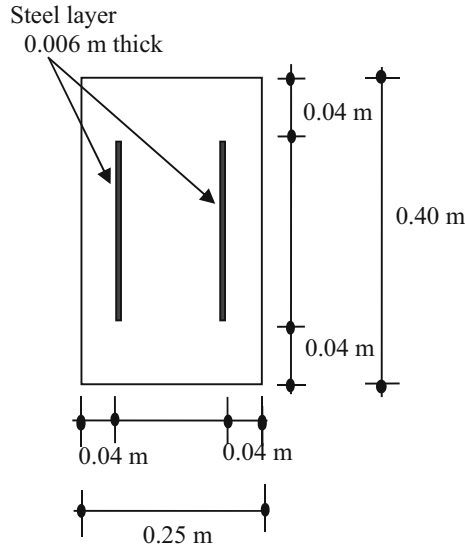


Fig. 1. Frame model of reinforced concrete



**Fig. 2.** Typical cross-section of the internal column

The use of the layered steel instead of steel reinforcement in thermal case is due to convenience in the model analysis used. Bending direction of the layered steel will have similar results obtained from the steel reinforcement. The temperature distribution throughout the element will have little different between the layered steel and the reinforcement. But, the effect to the reinforcing steel can be considered minor [8–10].

## 2.2 Element Type and Material Model

The Finite element analysis software has been performed using ANSYS with all elements of the reinforced concrete frame are modeled using 3-D tetrahedral coupled-field solid element. The coupled-field analysis is an analysis that takes into account the interaction between two or more disciplines of engineering. In this case, the coupled-field analysis is used for thermal-stress analysis [11–13].

The element is defined by ten nodes with four degrees of freedom (UX, UY, UZ, and TEMP) at each node. The total number of 38036 elements and 59080 nodes are used in the analyses with maximum size of the element is 130 mm. All materials defined with three different material models, i.e. Material Model Number 1 for layered steels, Material Model Number 2 for high-strength concrete of the columns, and Material Model Number 3 for normal-strength concrete of the beams [14].

The geometry, node locations, and the coordinate system for this type of element are shown in Fig. 3 and meshing of the element at concrete frame model is illustrated in Fig. 4.

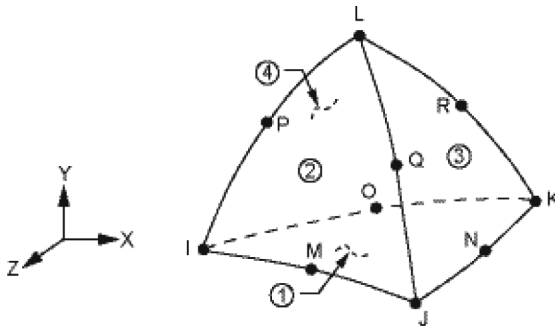


Fig. 3. Geometry of the element

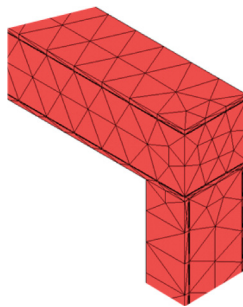


Fig. 4. Meshing of the elements at the top corner frame

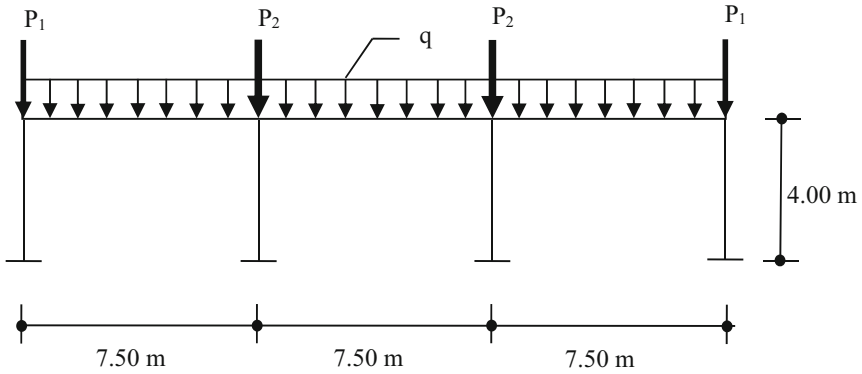
### 2.3 Boundary Conditions and Loadings

The boundary conditions assumed that the connections between columns and beams are rigid and the beam can move in any directions. All of the columns are fixed in their foundations, therefore the underneath of the column are restrained against translations and rotations.

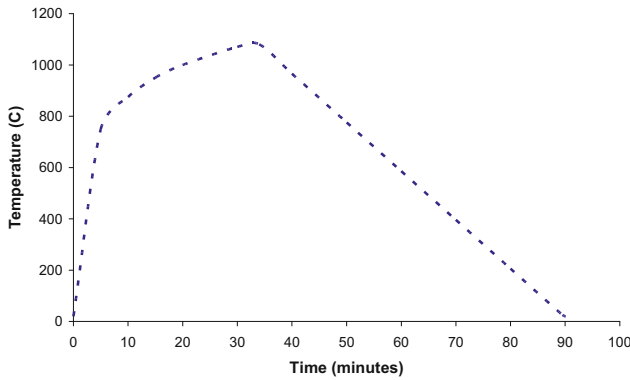
The loadings represent total design load at the fire limit state applied at an office building. In order to simulate loading from the above floor, the beams are assumed to receive vertical uniform design load over the fire compartment area of  $3.25 \text{ kN/m}^2$ . Loading from the weight of concrete slab of  $2400 \times 9.81 \times 0.25 = 5.89 \text{ kN/m}^2$  is added so that the total vertical uniform load would be  $9.14 \text{ kN/m}^2$ . Therefore, at 7.50 m runs a uniformly distributed load of  $q = 68.55 \text{ kN/m}$  is applied.

At 4.00 m height columns, compressive forces of  $P_1 = 462.5 \text{ kN}$  applied to internal columns and  $P_2 = 925 \text{ kN}$  applied to external columns, respectively. As described in the previous explanation that the loadings of the columns are represent total design load at the fire limit state at an office building as well. The total loading of the concrete frame is delineated in Fig. 5.





**Fig. 5.** Loading of the concrete frame



**Fig. 6.** Time-temperature of the firing compartment

### 3 Analysis Under Transient Strains

Reference [15] developed an empirical formula based on the plotted results of the average Young's modulus to obtain stress-strain relationship with transient strain included. The simple empirical formula of constitutive model can easily be incorporated into various commercial finite element analysis codes.

Time-temperature response of the analysis is predicted from the European code. The time-temperature curve of the firing compartment and the normalized stress-strain curve with transient strain included are presented in Fig. 6 and Fig. 7, respectively.

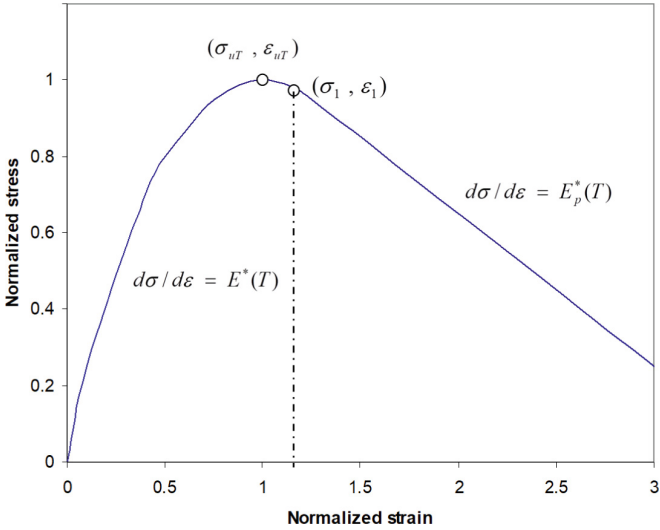


Fig. 7. Normalized stress-strain curve with transient strain included

Temperature-dependent of Young’s modulus in the elastic ranges are suggested in the following equations:

$$E^*(T) = E_0 \exp \left[ -\frac{(T - 20)^{0.65}}{25} \right] \tag{1}$$

For the Young’s modulus in the plastic range the following equation is recommended:

$$E_p^*(T) = E_0^- \exp [k_p(T - 20)^{2.15}] \tag{2}$$

where:  $E_0$  = initial young’s modulus,

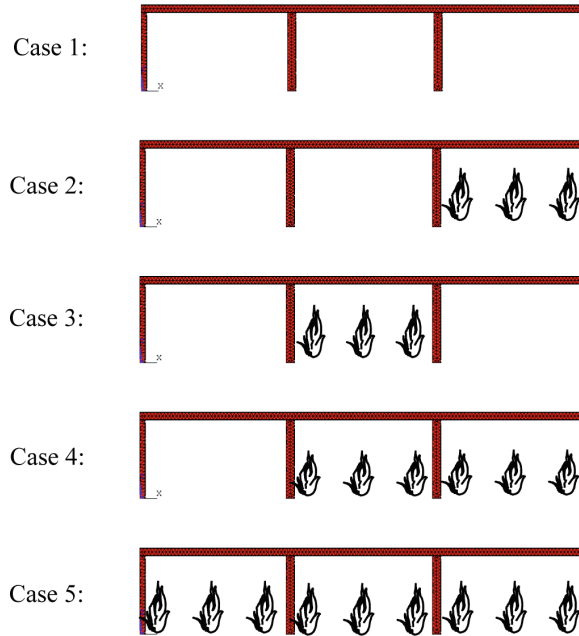
$$E_0^- = -0.045 E_0, \text{ and}$$

$$k_p = 10^{-6}.$$

## 4 Results and Discussions

The analysis carried out five different fire arrangements where Case 1 analyses the frame structure before fire. Follow by Case 2 when the fire exposes at one external room. Case 3, Case 4 and Case 5 exposes the fire at one internal room, both external and internal rooms, and all three rooms, respectively. In all cases the temperature distribution in the fired compartment is assumed to be uniform both in the vertical and horizontal direction. The five various fire arrangements of Cases 1 – 5 are presented in Fig. 8.

Summary of maximum/minimum stresses and displacements for the all cases are presented in the following Table 1 for the beams and Table 2 for the columns.



**Fig. 8.** Various fire arrangements of cases 1 - 5

**Table 1.** Stresses and displacements of the beams

	Case 1	Case 2	Case 3	Case 4	Case 5
Max. T (°C)	20	935	935	935	935
Max. $\Delta x$ (mm)	3.5	21	11	33	27
Max. $\Delta y$ (mm)	13	21	12	19	21
$f'_{\max}$ (MPa)	23.88	25.13	23.06	19.22	23.34
$f'_{\min}$ (MPa)	-17.23	-35.67	-41.39	-47.28	-39.34

**Table 2.** Stresses and displacements of the columns

	Case 1	Case 2	Case 3	Case 4	Case 5
Max. T (°C)	20	935	935	935	935
Max. $\Delta x$ (mm)	3.5	21	11	33	27
$f'_{\min}$ (MPa)	-32.86	-60.79	-64.46	-66.50	-62.67

Where: Max T = maximum temperature of the element.

Max  $\Delta x$  = maximum horizontal displacement.

Max  $\Delta y$  = maximum vertical displacement.

$f'_{\max}$  = maximum tensile stress.

$f'_{\min}$  = maximum compressive stress.

#### 4.1 Displacements

From Table 1 the maximum values of horizontal-displacement of 33 mm occurred in external column of the Case 4 and maximum vertical-displacement of 21 mm occurred in the external beam of the Case 2 and Case 5. The less significant values of the displacements are found in the Case 3 due to symmetrical loading where the fire only exposed at one room in the middle.

The maximum displacements in all cases are satisfied to the normal limiting conditions for the stability performance criterion in European Standard [7] where the failure criteria for load bearing capacity in terms of deflection for beam is  $\geq \text{span}/20$  and for lateral column is  $\geq 120$  mm. However, the value of 33 mm lateral displacement of the column in Case 4 can be considered very significant since the initial displacement before fire was only 3.5 mm. This means that the lateral displacement of the column increased over 900% from the initial displacement before fire.

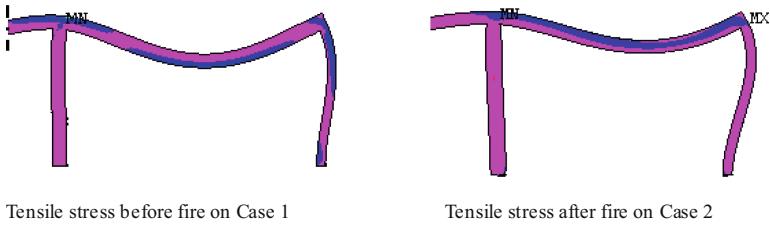
The large lateral displacement of the external column is caused mainly by thermal expansion of the heated beams. In fact, the European Standard [7] does not require the actual displacement to be calculated explicitly in ambient conditions and does not concern with deflection in an accidental situation. However, the span/depth ratios should be satisfied. In this case the beams span/depth ratio of 18.75 (calculated from 7500/400) is satisfied the standard.

#### 4.2 Stresses

It is interesting to notice that from the Table 1, the highest maximum concrete compressive stresses of -47.276 MPa in the beam and -66.499 MPa in the column are both found in the Case 4 where the firing compartment localized at two rooms, i.e. the internal and external rooms of the frame. On the other hand, the lowest maximum concrete compressive stresses of -35.672 MPa in the beam and -60.799 MPa in the column are both occurred in the Case 2 when the fire exposed only at one external room. The improvement of compressive stresses in the beams from the condition before firing in the Case 1 to after firing in the Case 2, Case 3, Case 4, Case 5 are 207%, 240%, 274%, and 228%, respectively. While in the column the improvement of the compressive stresses are 185%, 196%, 202%, and 191%, respectively.

The tension stress is assumed to be taken by the steel reinforcement. The critical temperature at the steel reinforcement is less than 400 °C. Since the temperature reduced steel strength is 0.85  $f_y$ , for all cases the steel strength are not significantly reduced. Therefore, further discussion would be focused mainly on the compression stresses which will be taken by concrete strength.

The average concrete temperature within the element can be determined from arithmetic mean of concrete temperature at the surface, quarter depth-temperature and center line temperature. In all cases, the critical average temperature is 402 °C on the beams and 433 °C on the column. Applying linear interpolation for strength reduction factor,



**Fig. 9.** Comparison of maximum principal stresses before and after fire of Case 1 and Case 2

the residual concrete strength reduction factors are 0.80 for the beam and 0.72 for the column. Assuming that concrete design strength of the beam  $f_{cu} = 61$  MPa and column  $f_{cu} = 103$  MPa, the temperature reduced permissible stresses,  $\bar{f}_c$  of concrete beam and column would be:

- Beam:  $\bar{f}_c = 0.80 \times 61 = 48.8$  MPa
- Column:  $\bar{f}_c = 0.72 \times 103 = 74.2$  MPa

In order to identify how close each case to the failure, the values of compressive stresses given in Table 1 then be compared with the temperature reduced permissible stress. Fractional values of the applied stresses to the temperature reduced permissible stresses at the firing beams in Case 2, Case 3, Case 4 and Case 5 are  $0.73 \bar{f}_c$ ,  $0.85 \bar{f}_c$ ,  $0.97 \bar{f}_c$  and  $0.81 \bar{f}_c$ , respectively. And the applied stresses at the columns in the Case 2, Case 3, Case 4, and Case 5 are  $0.82 \bar{f}_c$ ,  $0.87 \bar{f}_c$ ,  $0.90 \bar{f}_c$ , and  $0.84 \bar{f}_c$ , respectively.

For all cases, the applied stresses are found lower than the permissible stresses. These indicate that the structure will not collapse assuming there are no further beams and columns strength reductions due to concrete spalling.

### 4.3 Load Carrying Mechanism

The objective of this section is to study the mechanism by which the structure sustains the applied load at elevated temperature [16, 17]. The comparison is made between Case 1 at condition before fire and Case 2 at elevated temperature when the thermal expansion is taken into account. It has been shown in previous section that the thermal expansion effects play considerable role with regard to the significant increase of displacement achieved, especially the horizontal displacements of the beam.

Comparison of maximum principal stress before fire and under fire is represented in Fig. 9. The figures show the increases of horizontal displacements of the beams indicate that the load carrying mechanism has been modified by thermal expansion at elevated temperature. The location of maximum tensile stress distribution in the middle span of beam at elevated temperature is moved upward compared to the initial maximum tensile stress before fire. These indicate that sagging moment occurred after fire is higher than before fire. It should be noted that the moment capacity of the beam will also reduce in real structures under fire due to concrete spalling at the bottom of the beams.

## 5 Conclusions

Performance of concrete frame structures when exposed under localized fire scenarios have been discussed in present investigation. Three-dimensional finite element computer model using ANSYS considering transient effects gave reasonable results. Constitutive model with the transient strains included [15] is employed because this simple constitutive model can easily be incorporated into various commercial finite element analysis codes.

The tension stress is assumed to be taken by the steel reinforcement. The critical temperature at the steel reinforcement is less than 400 °C. In this condition, the temperature reduced steel strength is  $0.85 f_y$ , thus, for all cases the steel strength are not significantly considered.

The results of the present modeling indicated that the behavior of complete structure is different from the behavior of individual isolated member. The results have good agreement with the previous researches in the similar studies [3, 18, 19]. Therefore, it is essential to develop new fire engineering methods from the study of complete structures rather than from isolated member behavior.

**Acknowledgment.** Grateful acknowledgment is addressed to the Master Program of Civil Engineering, Faculty of Engineering, University of Mataram for the financial support and facilities provided.

## References

1. Purkiss, J.A.: Fire safety engineering design of structures. 2<sup>nd</sup> ed., Butterworth-Heinemann-Elsevier, Oxford, England (2006).
2. The Institute of Structural Engineers.: Introduction to the fire safety engineering of structures. The Institution of Structural Engineers, London (2003).
3. Bayley, C.: Holistic behaviour of concrete buildings in fire. In: Proceedings of the Institution of Civil Engineers, Structures & Buildings. 152 (3), pp. 199–212 (2002).
4. Al-Mutairi, N.M., Al-Shaleh, M.S.: Assessment of fire-damaged Kuwaiti structures. Journal of Materials in Civil Engineering, 9 (1), pp. 176-182 (1997).
5. SNI 03-2847-2019.: Design practical code of structural concrete for building construction. BSN, Jakarta, Indonesia (2019).
6. SNI 1741-2008.: Fire resistance of building structure components testing method for the prevention of fire hazards on concrete buildings. BSN, Jakarta, Indonesia (2008).
7. Eurocode 2.: Design of concrete structures: General rules – Structural fire design. European Committee for Standardisation, Brussels, prEN 1992-1-2, Part 1.2 (2002).
8. Butean, C., Heghes, B.: Flexure behavior of a twolayer reinforced concrete beam. Procedia Manufacturing, 46, pp. 110-115 (2020).
9. Chakrawarthy, V., Jesuarulraj, R.L., Avudaiappan, S., Rajendren, D., Amran, M., Guindos, P., Roy, K., Fediuk, R., Vatin, N.I.: Effect of design parameters on the flexural strength of reinforced concrete sandwich beams. Crystal, 12(1021), pp. 1–22, Switzerland (2022).
10. Balagopal, V. Sambamurthy, V.: Performance evaluation of coir pith ash blended cement concrete exposed to elevated temperature. Jurnal Teknologi (Material Sciences & Engineering), 82(2), pp. 93-100 (2020).
11. ANSYS 2021/R2.: Mechanical Tutorials. ANSYS Inc., Canonsburg, PA 15317, USA.

12. Taufik, S., Anggraini, E., Setiawan, I.: ANSYS numerical modeling of confined deep beam with highstrength concrete. *International Journal of Structural Glass and Advanced Materials Research*, pp. 1–15 (2020).
13. Tjitradi, D., Eliatun, E., Taufik, S.: 3D ANSYS numerical modeling of reinforced concrete beam behavior under different collapsed mechanism. *International Journal of Mechanics and Applications*, 7(1), pp. 14-23 (2017).
14. Moaveni, S.: *Finite Element Analysis: Theory and Application with ANSYS*. 4<sup>th</sup> ed., Pearson, United States (2015).
15. Li, L. Y., Purkiss, J.A.: Stress-strain constitutive equations of concrete material at elevated temperatures. *Fire Safety Journal*, Elsevier, 40(7), pp. 669-686 (2005).
16. Akmaluddin, A., Murtiadi, S.: Hybrid precast concrete column and sandwich concrete beam under static loading. *Procedia Engineering*, 54, pp. 286-298 (2013).
17. Akmaluddin, A., Murtiadi, S., Anshari, B.: Flexural stiffness of normal and sandwich reinforced concrete beam exposed to fire under fixed loading. *International Review of Civil Engineering*, 11, pp. 36-44 (2020).
18. Murtiadi, S.: Review of Indonesian standard for concrete building subjected to fire. *Procedia Engineering*, 54, pp. 668–674, Elsevier (2013).
19. Chana, P., Price, B.: The Cardington fire test. *Concrete*, London, 37(1), pp. 28-33 (2003).

**Open Access** This chapter is licensed under the terms of the Creative Commons Attribution-NonCommercial 4.0 International License (<http://creativecommons.org/licenses/by-nc/4.0/>), which permits any noncommercial use, sharing, adaptation, distribution and reproduction in any medium or format, as long as you give appropriate credit to the original author(s) and the source, provide a link to the Creative Commons license and indicate if changes were made.

The images or other third party material in this chapter are included in the chapter's Creative Commons license, unless indicated otherwise in a credit line to the material. If material is not included in the chapter's Creative Commons license and your intended use is not permitted by statutory regulation or exceeds the permitted use, you will need to obtain permission directly from the copyright holder.

