

Part of **SPRINGER NATURE**

[PROCEEDINGS](#) | [JOURNALS](#) | [BOOKS](#)

Search

Series: [Advances in Engineering Research](#)

Proceedings of the First Mandalika International Multi-Conference on Science and Engineering 2022, MIMSE 2022 (Civil and Architecture)

PROCEEDINGS OF THE FIRST MANDALIKA INTERNATIONAL MULTI-CONFERENCE ON SCIENCE AND ENGINEERING 2022, MIMSE 2022 (CIVIL AND ARCHITECTURE)



Traffic Management Simulation to Improve Tanah Aji Intersection Road Network Performance

Authors

Fera Fitri Salsabila^{1, *}, Desi Widianty¹, I Dewa Made Alit Karyawan¹, Hasyim¹

¹ Department of Civil Engineering, Faculty of Engineering, University of Mataram, Mataram, Indonesia

* Corresponding author. Email: salsabilafe@unram.ac.id

Corresponding Author

Fera Fitri Salsabila

Available Online 23 December 2022.

DOI

[10.2991/978-94-6463-088-6_5](https://doi.org/10.2991/978-94-6463-088-6_5) [How to use a DOI?](#)

Keywords

traffic management; road network performance; traffic simulation

Abstract

This paper is prepared to find out alternative traffic management that can reduce congestion on the Road Network at Tanah Aji Intersection. This research method is carried out by collecting primary and secondary data. Primary data includes field surveys, road geometry, traffic flow volume, and traffic light settings. The secondary data is road network data. After that, the route selection modeling was made with the help of transportation planning software and charged to the idealization of the road network. Furthermore, an analysis is carried out to find alternative traffic management that results in better road network performance than the existing condition. The results obtained show that the existing condition of each road section at the Tanah Aji intersection reaches a V/C Ratio of up to 0.61 for the Majapahit Road, and 0.50 for the Airlangga Road, 0.68 for the Sriwijaya Road, and 0.88 for Gajah Mada Road. To improve the performance of the segment and the performance of the intersection, various alternative simulations are made. The best result is alternative simulation III (three) with a performance increase of 32.79% for Majapahit Road, 0% for Airlangga Road, 33,33% for Sriwijaya Road, and 61.8% for Gajah Mada Road.

Copyright

© 2023 The Author(s)

Open Access

Open Access This chapter is licensed under the terms of the Creative Commons Attribution-NonCommercial 4.0 International License (<http://creativecommons.org/licenses/by-nc/4.0/>), which permits any noncommercial use, sharing, adaptation, distribution and reproduction in any medium or format, as long as you give appropriate credit to the original author(s) and the source, provide a link to the Creative Commons license and indicate if changes were made.

[+ Download article \(PDF\)](#)



Proceedings of the First Mandalika International Multi-Conference on Science and
Engineering 2022, MIMSE 2022 (Civil and Architecture)

Series

Advances in Engineering Research

Publication Date

23 December 2022

ISBN

10.2991/978-94-6463-088-6_5

ISSN

2352-5401

DOI

10.2991/978-94-6463-088-6_5 [How to use a DOI?](#)

Copyright

© 2023 The Author(s)

Open Access

Open Access This chapter is licensed under the terms of the Creative Commons Attribution-NonCommercial 4.0 International License

(<http://creativecommons.org/licenses/by-nc/4.0/>), which permits any noncommercial use, sharing, adaptation, distribution and reproduction in any medium or format, as long as you give appropriate credit to the original author(s) and the source, provide a link to the Creative Commons license and indicate if changes were made.

Cite this article

ris

enw

bib

TY - CONF
AU - Fera Fitri Salsabila
AU - Desi Widianty
AU - I Dewa Made Alit Karyawan
AU - Hasyim
PY - 2022
DA - 2022/12/23
TI - Traffic Management Simulation to Improve Tanah Aji Intersection Road Network Performance
BT - Proceedings of the First Mandalika International Multi-Conference on Science and Engineering 2022, MIMSE 2022 (Civil and Architecture)
PB - Atlantis Press
SP - 30
EP - 40
SN - 2352-5401
UR - https://doi.org/10.2991/978-94-6463-088-6_5
DO - 10.2991/978-94-6463-088-6_5
ID - Salsabila2022
ER -

[+ download .ris](#) [COPY TO CLIPBOARD](#)

Atlantis Press

Atlantis Press – now part of Springer Nature – is a professional publisher of scientific, technical & medical (STM) proceedings, journals and books. We offer world-class services, fast turnaround times and personalised communication. The proceedings and journals on our platform are Open Access and generate millions of downloads every month.

For more information, please contact us at: contact@atlantis-press.com

- ▶ PROCEEDINGS
- ▶ JOURNALS
- ▶ BOOKS
- ▶ POLICIES
- ▶ ABOUT
- ▶ NEWS
- ▶ CONTACT
- ▶ SEARCH

▶ [MANAGE COOKIES/DO NOT SELL MY INFO](#)

[Home](#) [Privacy Policy](#) [Terms of use](#)   

Copyright © 2006-2023 Atlantis Press – now part of Springer Nature

Part of **SPRINGER NATURE**

[PROCEEDINGS](#) | [JOURNALS](#) | [BOOKS](#)

Search

Series: [Advances in Engineering Research](#)

Proceedings of the First Mandalika International Multi-Conference on Science and Engineering 2022, MIMSE 2022 (Civil and Architecture)

ARTICLES

Search

[+ Advanced search](#)

SEARCH

22 articles

Proceedings Article

Peer-Review Statements

Buan Anshari, Mohammed Ali Elsageer, Hilton Ahmad, Wen-Shao Chang

All of the articles in this proceedings volume have been presented at the 1st MIMSE 2022 on September 14, 2022 in Mataram, Indonesia. These articles have been peer reviewed by the members of the Scientific Committee and approved by the Editor-in-Chief, who affirms that this document is a truthful description...

[+ Article details](#)

[+ Download article \(PDF\)](#)

Proceedings Article

Application of the Adaptive Neuro Fuzzy Inference System (ANFIS) to Predict Ultimate Bearing Capacity of Footing on Granular Soil

Ngudiyono, Tri Sulistyowati

The ultimate bearing capacity is an important parameter in the footing foundation design. Several classical methods are often used to analyze the bearing capacity of a footing foundation. However, the results of this analysis always give less accurate results than the experiment. In this manuscript,...

[+ Article details](#)

[+ Download article \(PDF\)](#)

Proceedings Article

Review on the Rigid Pavement Design for the Tanamori Road in the Labuan Bajo Resort Area of West Manggarai in East Nusa Tenggara Province – Indonesia

I Dewa Made Alit Karyawan, Didi S. Agustawijaya, Ria Restu Marlaninstyas, Made Mahendra, Hasyim, Fera Fitri Salsabila

Tanamori, West Manggarai, East Nusa Tenggara, as a tourism destination area development in Indonesia needs to be supported by the existence of roads as the main means of its development. The road plan is in an area with heavy terrain so it takes a long transportation time. The limited time for completion...

[+ Article details](#)

[+ Download article \(PDF\)](#)

Proceedings Article

Hydraulic Turbulence Caused by Ship Movement and Slope Stability at the Juncture of Dredging and Reclamation

Sudipta Chakraborty, A. R. Kambekar

For accommodating deep drafted vessels dredging at the vessel maneuvering area to the required depth as well as deepening the berth pocket of the upcoming jetty also became necessary. Improvement of strength of the reclaimed ground became essential to cater to the future loads of container stacks, gantry...

[+ Article details](#)

[+ Download article \(PDF\)](#)

Proceedings Article

Traffic Management Simulation to Improve Tanah Aji Intersection Road Network Performance

Fera Fitri Salsabila, Desi Widianty, I Dewa Made Alit Karyawan, Hasyim

This paper is prepared to find out alternative traffic management that can reduce congestion on the Road Network at Tanah Aji Intersection. This research method is carried out by collecting primary and secondary data. Primary data includes field surveys, road geometry, traffic flow volume, and traffic...

[+ Article details](#)

[+ Download article \(PDF\)](#)

Proceedings Article

Comparative Investigations on Reactive Powder Concrete with and Without Coarse Aggregate

Hussein Kareem Sultan, Alaa S. Al-Husainy, Buan Anshari

Crushed dolomite with a nominal size of 8 mm and fine quartz sand with a nominal size of 2 mm were used to produce reactive powder concrete (RPC) this study. The compressive strength is comparable to that of standard RPC with a maximum aggregate size of less than 0.6 mm. The use of crushed dolomite...

[+ Article details](#)

[+ Download article \(PDF\)](#)

Proceedings Article

Assessment Factor of Strength Development for Normal, High Strength, and Lightweight Concretes

Ni Nyoman Kencanawati, I Nyoman Merdana, Ngudiyono, Ricko Fachri Afriandi

Development in the construction sector continues to increase. The most common building material nowadays is concrete. Although normal concrete is often is being used, at this time high strength concrete and lightweight concrete have also been widely used in construction. In the codes for concrete materials,...

[+ Article details](#)

[+ Download article \(PDF\)](#)

Proceedings Article

Constitutive Model of Concrete Frame Structure Under Localized Fire Simulations

Suryawan Murtiadi, Made Mahendra, I Dewa Made Alit Karyawan, Akmaluddin Akmaluddin, Eko Pradjoko

In recent decades, special considerations have been given to the use of fire safety analysis on modern concrete buildings. The considerations include the stability of building which providing sufficient time for the occupants to

evacuate and for firefighting. This paper is mainly concerned with the performance...

[+ Article details](#)

[+ Download article \(PDF\)](#)

Proceedings Article

Review of the 2018 Lombok Earthquake, Indonesia, and Its Impact from Previous Studies

Achmad Fajar Narotama Sarjan, Ismail Hoesain Muchtaranda

A series of strong earthquakes struck Lombok Island on 29 July (M 6.4), 5 August (M 7.0), 9 August (M 5.9), and 19 August (M 6.3 and M. 6.9) 2018 which led to severe damage with more than 500 deaths, 1,833 injured and devastated 186,010 houses (National Disaster Mitigation Agency). Lombok Island is categories...

[+ Article details](#)

[+ Download article \(PDF\)](#)

Proceedings Article

Disaster Mitigation Plan Based Flood Event Occurred on January 30th, 2021 in Kuta-Mandalika, Lombok, Indonesia

Atas Pracoyo, Ery Setiawan, Muh. Bagus Budianto, Eko Pradjoko

There was flood event that occurred on January 30th, 2021 in Kuta Mandalika Lombok. There were many infrastructure damages but no injured people were reported. According to information, this January flood is the biggest flood that occurred in Kuta Lombok. The research method consists of is field survey...

[+ Article details](#)

[+ Download article \(PDF\)](#)

Proceedings Article

The Application of Two Tsunami Inundation Model in the Kuta Mandalika Coast

Eko Pradjoko, Alan Maulana Karisma, Atas Pracoyo, Bambang Harianto, Agus Suroso, Yusron Saadi

The analysis of tsunami inundation is the part of tsunami threat study. In the manual of the Disaster Prevention National Agency (DPNA), the tsunami inundation can be analyzed by the Berryman Method. The method calculates the tsunami wave height reduction when inundating the land based on the surface...

[+ Article details](#)

[+ Download article \(PDF\)](#)

Proceedings Article

Hybrid Composite Sandwich Panels for Lightweight Housing Components: Concept and Experimental Results

Jauhar Fajrin, Yan Zhuge

Reducing the weight of structures is one of the key factors in maintaining affordable housing costs. The self-weight of a structure, which makes up a significant portion of the total load on a structure, may be decreased by using the appropriate material. Today, a lightweight composite sandwich panel...

[+ Article details](#)

[+ Download article \(PDF\)](#)

Proceedings Article

The Behavior of Two-Way Sandwich Concrete Slab with Aspect Ratios Variation Subjected to Central Point Load

Akmaluddin Akmaluddin, Suryawan Murtiadi, Ngudiyono, Pathurahman, Suparjo, I Nyoman Merdana

The self-weight of the concrete slab in high-rise building construction significantly affects the risk of structural failure in earthquake-prone areas as the earthquake force is directly proportional to the mass of the building. To reduce the building mass then the sandwich concrete slab is introduced....

[+ Article details](#)

[+ Download article \(PDF\)](#)

Proceedings Article

Exploring People's Reasons of Living in Disaster-Prone Area and Promoting Disaster Risk Reduction in Urban Planning

Deffi Ayu Puspito Sari, Citra Ridhani

Cities among other areas bear the brunt of the impact of climate-related disasters, especially cities that are located in the coastal zone. To build resilient cities, it is necessary to involve disaster risk reduction (DRR) in spatial planning (RTRW) because it has an essential role in both mitigation...

[+ Article details](#)

[+ Download article \(PDF\)](#)

Proceedings Article

The Influence of Waste Ratio on Waste Consumption Level, Waste Reduction Index, and Growth of Black Soldier Fly Larvae

Deffi Ayu Puspito Sari, Darmono Taniwiryo, Novita Indri Pratiwi, Prisma Nursetyowati, Aqil Azizi, Diki Surya Irawan, Insan Harapan Harahap, Maskur

About 80% of the total amount of waste produced is generally organic waste, which is only seen as residual and has no economic value. Currently, the

problem of organic waste is a problem that must be addressed immediately Black Soldier Fly is one of the solutions. This study aims to determine the...

[+ Article details](#)

[+ Download article \(PDF\)](#)

Proceedings Article

Analysis of Building Damage to the Housing Sector Based on Post-North Lombok Earthquake 2018 Investigations

Yaya Fradana, Jauhar Fajrin

A major earthquake with a magnitude of 7.0 on the Richter Scale occurred in the Province of West Nusa Tenggara in 2018. Along with the deaths caused by the earthquake, public infrastructural facilities also sustained significant damage. One of the many losses experienced by the people of West Nusa Tenggara,...

[+ Article details](#)

[+ Download article \(PDF\)](#)

Proceedings Article

Stability of the Meninting Diversion-Spillway Tunnel Constructed into Weak Volcanic Rock Masses Influenced by the Lombok Earthquake 2018

Didi S. Agustawijaya, Tri Sulistyowati, Ausa R. Agustawijaya

The Meninting diversion-spillway tunnel is a part of the Meninting dam project located in West Lombok District. The construction commenced in 2017; then, a series of severe Lombok earthquakes halted the construction for a while in 2018, where some landslides occurred around the site. This possibly caused...

[+ Article details](#)

[+ Download article \(PDF\)](#)

Proceedings Article

Passenger Satisfaction Measurement with a SERVQUAL Approach and Proposed Improvements to Non Bus Rapid Transit (BRT) Transjakarta Services Poris Plawad Route – Senayan Bundaran

Arief Suwandi, Ratri Kartika

Developing countries tend to have problems in the form of people often encountering the phenomenon of congestion. Public transportation is one of the assessments of the quality level of development of an area or country. The government continues to try to unravel the phenomenon of congestion that occurs...

[+ Article details](#)

[+ Download article \(PDF\)](#)

Proceedings Article

The Implementation of Community-Based Agrotourism Concept as Sustainable Design in Rebakong-Kayangan Village, North Lombok Regency

Rini Srikus Saptaningtyas, Giska Ayu Pradana Putri Kamase, Noor Oktova Fajriyah, Lee Yoke Lai

The tourism sector is one of the main pillars of a productive economy that has enormous potential to give a positive impact extensively. The Government of North Lombok Regency, West Nusa Tenggara Province utilized this sector to improve not only economic aspects but also the impact on social, cultural,...

[+ Article details](#)

[+ Download article \(PDF\)](#)

Proceedings Article

Study on the Linear Buckling Behaviour of Two Local Bamboo Species Under Different Length and Boundary Conditions via Finite Element Analysis (FEA)

Hazrina Mansor, Mohammad Rosnizam Lop, Buan Anshari

Bamboo is the world's fastest-growing grass species. Although bamboo is a resilient and sustainable engineering material, its use in the building sector has been limited. The limitation in the usage is most likely due to its nature, which might vary depending on the species and origin, creating a challenge...

[+ Article details](#)

[+ Download article \(PDF\)](#)

Proceedings Article

The Development of the SARIMA Model for Flood Disaster Resilience

Heri Sulistiyono, Faisal Irshad Khan, Humairo Saidah, Ery Setiawan, I Wayan Yasa, I Wayan Suteja, Salehudin, I Dewa Gede Jaya Negara

Some agencies in the world warned that the recent flood disaster has been getting worse all over the world. Engineers have studied flooding and its impact with various simulation models. Yet, there is no model considered the best for all estimations of flood disasters in the future. In this paper, the...

[+ Article details](#)

[+ Download article \(PDF\)](#)

Proceedings Article

Material Properties and Fracture Energy of Kenaf FRP Composites

Zaim Omar, Sugiman Sugiman, Mustafasanie M. Yussof, Hilton Ahmad

The incorporations of synthetic fibers have raised worrying concerns, so an alternative material which is inexpensive and ecological resources is proposed. Kenaf fiber has high tensile modulus and elongation at break and potentially to be used as reinforcing fibers in FRP composites to replace synthetic...

[+ Article details](#)

[+ Download article \(PDF\)](#)

1

Atlantis Press

Atlantis Press – now part of Springer Nature – is a professional publisher of scientific, technical & medical (STM) proceedings, journals and books. We offer world-class services, fast turnaround times and personalised communication. The proceedings and journals on our platform are Open Access and generate millions of downloads every month.

For more information, please contact us at: contact@atlantis-press.com

- ▶ PROCEEDINGS
- ▶ JOURNALS
- ▶ BOOKS
- ▶ POLICIES
- ▶ MANAGE COOKIES/DO NOT SELL MY INFO
- ▶ ABOUT
- ▶ NEWS
- ▶ CONTACT
- ▶ SEARCH



Part of **SPRINGER NATURE**

[PROCEEDINGS](#) | [JOURNALS](#) | [BOOKS](#)

Search

Series: [Advances in Engineering Research](#)

Proceedings of the First Mandalika International Multi-Conference on Science and Engineering 2022, MIMSE 2022 (Civil and Architecture)

ORGANIZERS

Advisors

Bambang Hari Kusumo

University of Mataram, Indonesia

Arief Kusuma A. P.

Universitas Esa Unggul, Indonesia

Chairman

Nur Kaliwantoro

University of Mataram, Indonesia

Vice Chairman

Heri Wijayanto

University of Mataram, Indonesia

Organizing Committee

Jauhar Fajrin

University of Mataram, Indonesia

Nurchayati

University of Mataram, Indonesia

Editors

Buan Anshari

University of Mataram, Indonesia

Mohammed Ali Elsageer

Sirte University, Libya

Hilton Ahmad

Universiti Tun Hussein Onn Malaysia, Malaysia

Wen-Shao Chang

University of Sheffield, UK

Scientific Committee

Mohd Remy Rozainy

Universiti Sains Malaysia, Malaysia

Akmaluddin

University of Mataram, Indonesia

Atlantis Press

Atlantis Press – now part of Springer Nature – is a professional publisher of scientific, technical & medical (STM) proceedings, journals and books. We offer world-class services, fast turnaround times and personalised communication. The proceedings and journals on our platform are Open Access and generate millions of downloads every month.

For more information, please contact us at: contact@atlantis-press.com

- ▶ PROCEEDINGS
- ▶ JOURNALS
- ▶ BOOKS
- ▶ POLICIES
- ▶ MANAGE COOKIES/DO NOT SELL MY INFO
- ▶ ABOUT
- ▶ NEWS
- ▶ CONTACT
- ▶ SEARCH

[Home](#) [Privacy Policy](#) [Terms of use](#)   

Copyright © 2006-2023 Atlantis Press – now part of Springer Nature



Traffic Management Simulation to Improve Tanah Aji Intersection Road Network Performance

Fera Fitri Salsabila^(✉), Desi Widianty, I Dewa Made Alit Karyawan^(ID), and Hasyim

Department of Civil Engineering, Faculty of Engineering, University of Mataram, Mataram, Indonesia

salsabilafe@unram.ac.id

Abstract. This paper is prepared to find out alternative traffic management that can reduce congestion on the Road Network at Tanah Aji Intersection. This research method is carried out by collecting primary and secondary data. Primary data includes field surveys, road geometry, traffic flow volume, and traffic light settings. The secondary data is road network data. After that, the route selection modeling was made with the help of transportation planning software and charged to the idealization of the road network. Furthermore, an analysis is carried out to find alternative traffic management that results in better road network performance than the existing condition. The results obtained show that the existing condition of each road section at the Tanah Aji intersection reaches a V/C Ratio of up to 0.61 for the Majapahit Road, and 0.50 for the Airlangga Road, 0.68 for the Sriwijaya Road, and 0.88 for Gajah Mada Road. To improve the performance of the segment and the performance of the intersection, various alternative simulations are made. The best result is alternative simulation III (three) with a performance increase of 32.79% for Majapahit Road, 0% for Airlangga Road, 33.33% for Sriwijaya Road, and 61.8% for Gajah Mada Road.

Keywords: traffic management · road network performance · traffic simulation

1 Introduction

The number of vehicles that continues to grow and is not accompanied by changes in the geometry of the intersection causes the existing condition of the Tanah Aji intersection to experience congestion at certain hours. The existing condition of the Tanah Aji intersection was initially a signalized intersection, but the intersection was closed due to high delays and long queues at each arm of the intersection. Therefore, it is recommended to close the intersection in 2018 by diverting traffic flow to u-turn east and u-turn west. In 2022 due to the increasing volume of traffic, every u-turn begins to experience delays and long queues, so it is necessary to re-analyze to improve road performance. In addition, increased traffic volume at intersections is known to lead to higher fuel consumption, which in turn results in greater emissions (Gunawan and Budi, 2017).

This paper will analyze the existing conditions at the intersection and the approach arm of the intersection and then look for alternative traffic management to improve road and intersection performance (without considering other aspects such as costs, social and legal). The primary data needed is a road and intersection inventory survey with the target of road and intersection geometry information in the form of roads, land use, vehicle circulation arrangements around the location, applicable intersection control arrangements, and intersection inventory. Then the existing traffic data with information on the target volume, speed of vehicle composition, and the performance of sections and intersections, as well as the average loading factor of each vehicle (occupancy) for people/vehicles and the condition of public transportation around the location. Traffic performance analysis was carried out with PTV Visim software.

2 Existing Traffic Condition

In general, the transportation modeling used is a four-stage transportation planning model, namely the generation stage, the distribution stage, the mode selection stage, and the trip loading stage. These stages can be seen in Fig. 1.

Origin-Destination Matrix (O-D Matrix) is the main input that is most widely used in various kinds of transportation system planning and management. It can be said that the ‘actually happening’ MAT in the field can never be known with certainty by anyone,

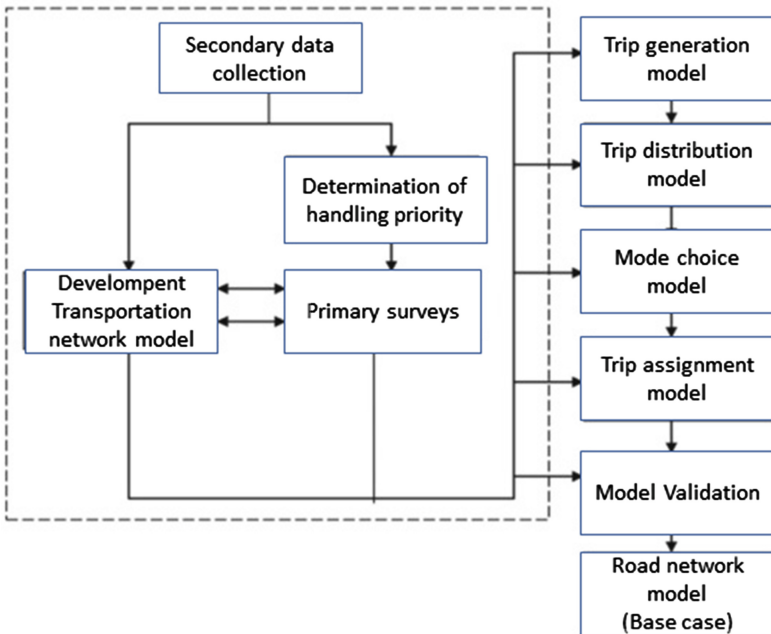


Fig. 1. Transportation Model

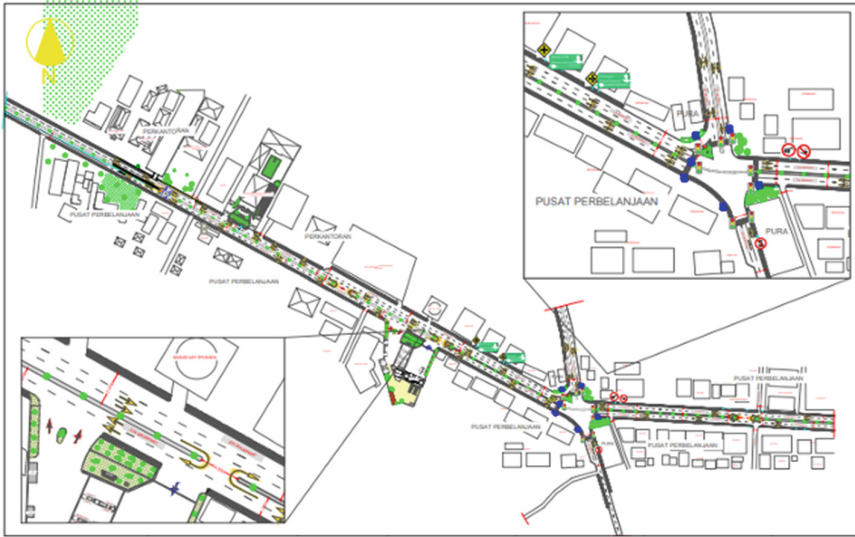


Fig. 2. Existing Road Network Condition

so researchers have developed various methods in recent years to be able to estimate the MAT. At the Tanah Aji intersection, a matrix of origin and destination has been created based on the results of the Car Turning Moving Counting (CTMC) survey. The results of this survey will later be used as the basis for calculating the performance of sections and intersections.

To facilitate analysis and simulation, inventory surveys and geometric intersections were also carried out. This data is used to calculate the road capacity at the Tanah Aji intersection. The level of service for sections and intersections will be seen based on the calculation results. From the calculation results, it will be seen whether or not handling is necessary to improve road performance. Based on the results of observations in the field, the following is a description of the existing condition of the Tanah Aji intersection based on the results of the inventory both in terms of geometric and road completeness (Fig. 2).

From the results of the turning movement survey and the classified segment volume, an estimated origin-destination matrix is currently available (in 2022) in units of pcu/hour as shown in the Tables 1 and 2.

Based on Table 1, it can be seen that the largest travel origin is dominated by zone 4 at 2110 pcu/hour while the largest travel destination is dominated by the direction to zone 2 at 1803 pcu/hour. Current performance needs to be studied to find out the current condition problems so that it can be used as a basis for determining potential impact management. From the results of traffic loading carried out, the performance of the road network and the performance of each road segment for the current (existing) condition can be seen in Table 4.

Based on Table 3, it can be seen that the existing roads around the Tanah Aji intersection can still accommodate existing traffic, but problems arise for Gajah Mada Road,

Table 1. Origin-Destination Matrix

OD	1	2	3	4	Quantity
1	0	911	71	310	1292
2	871	0	279	684	1834
3	24	62	0	453	539
4	398	830	882	0	2110
Quantity	1293	1803	1232	1447	5775

Table 2. Origin Destination Matrix (OD) Existing Condition (PCU/HOUR)

OD	1	2	3	4	Quantity
1	0	911	71	310	1292
2	871	0	279	684	1834
3	24	62	0	453	539
4	398	830	882	0	2110
Quantity	1293	1803	1232	1447	5775

Table 3. Zona Description

Zona	Description
1	Airlangga
2	Sriwijaya
3	Gajah Mada
4	Majapahit

Table 4. Zona Description

Name	Type	Volume (pcu/hour)	Capacity (pcu/hour)	VCR	LOS	Speed (km/h)	Density (pcu/km)
Majapahit	4/2 D	3445	5655	0.61	C	37.15	92.73
Airlangga	4/2 D	2471	4906	0.50	C	42.78	57.76
Sriwijaya	4/2 D	3590	5251	0.68	C	35.55	100.98
Gajah Mada	2/2 UD	1841	2089	0.88	E	32.54	56.58

where the V/C ratio has reached 0.88. Meanwhile, the performance of the existing intersection for the Tanah Aji intersection shows the highest delay in the morning, namely

Table 5. Zona Description

Name	Morning peak	Afternoon peak
	Existing	Existing
Tanah Aji	Junction delay	
	14,86	13,44
	LOS	
	B	B
	Queue	
23,92	60,82 m/h	

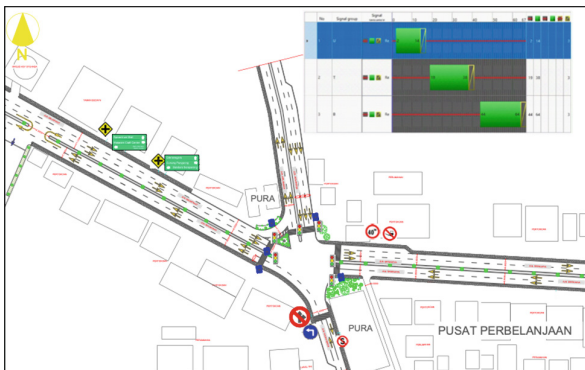


Fig. 3. Tanah Aji intersection with Do-Something I

14.86, Level of Service (LOS) B, and the longest queue length in the afternoon is 60.82 m/h (Table 5).

3 Traffic Conditions with Do-Something I Scenario

The existing condition of Tanah Aji intersection is a priority intersection, so that in the first scenario (do-something I) it is proposed to change the intersection into a signalized intersection. To be more optimal, it is planned and integrated with the Mataram City ATCS (Area Traffic Control System) which is at the Mataram City Transportation Service. The following is a picture of the condition of the Tanah Aji intersection with traffic light settings (Fig. 3).

The traffic light cycle that is made is using 3 phases with the south approach foot or the Gajah Mada Road not being given traffic light but given a sign to turn left. The following traffic light cycle time is given at the Tanah Aji intersection with different cycle times for certain hours (Fig. 4).

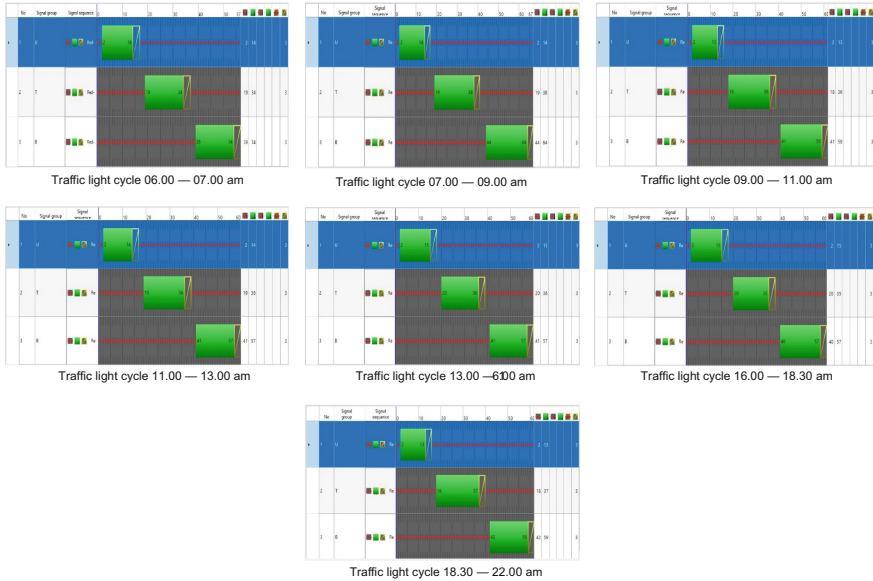


Fig. 4. Cycle Time Traffic Light

Table 6. Comparison of Existing Intersection Performance with Do-Something I Scenario

Time	Junction Delay		Los		Queue	
	Existing	Traffic Light	Existing	Traffic Light	Existing	Traffic Light
06.00–07.00	2,12	14,47	A	B	0,25	7,62
07.00–09.00	14,86	38,32	B	D	23,92	70,69
09.00–11.00	9,50	9,24	B	B	3,49	6,71
11.00–13.00	9,62	30,66	B	D	7,74	31,44
13.00–16.00	3,20	4,37	A	A	0,04	15,75
16.00–18.30	13,44	41,17	B	E	60,82	67,49
18.30–22.00	3,80	12,37	A	B	0,08	10,99

The results of the performance of the intersection with the application of traffic light and its comparison with the existing conditions at the Tanah Aji intersection are as shown in Table 6.

From the results of the intersection performance above, there is a performance with Level of Service (LOS) D and E in the morning peak, afternoon peak, and afternoon peak. The table above shows that with the setting using Traffic Light, there is a higher delay compared to without Traffic Light.

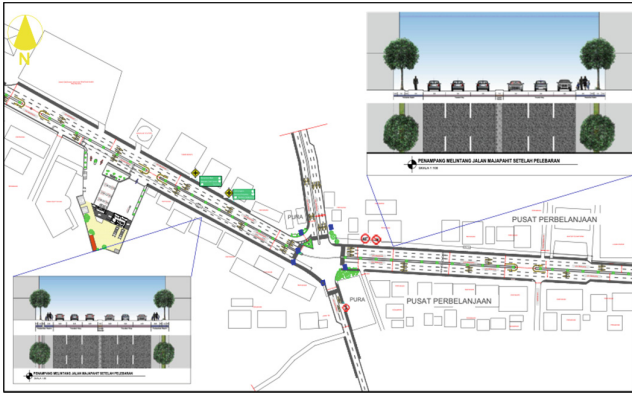


Fig. 5. Tanah Aji intersection with Do-Something II

Table 7. Intersection Performance with Do-Something II Scenario

Name	Morning peak	Afternoon peak
	DS II	DS II
Tanah Aji	Junction delay	
	9,55	10,89
	LOS	
	B	B
	Queue	
	18,24	7,67

4 Traffic Conditions with Do-Something II Scenario

In the do-something II scenario at the Tanah Aji intersection, to improve network performance, it is tried to increase the capacity of Majapahit and Sriwijaya to 6/2 D each. The following is the geometric design of the Tanah Aji intersection with the do-something II scenario model (Fig. 5).

Road widening is carried out to reduce queues and delays at intersection points and intersection approach arms, so that traffic flow becomes smoother. The performance of the intersection with scenario II can be seen in the Table 7.

Table 8. Performance of Each Road with Do-Something II Scenario

No	Name	Type	Volume (pcu/hour)	Capacity (pcu/hour)	VCR	Los	Speed (km/h)	Density (pcu/km)
1	Majapahit	6/2 D	3457	8482.32	0.41	B	45.40	62.17
2	Airlangga	4/2 D	2483	4906.44	0.51	C	42.66	58.21
3	Sriwijaya	6/2 D	3602	7876.44	0.46	C	43.45	67.68
4	Gajah Mada	2/2 UD	1851	2089,04	0,89	E	32,43	57,07

From the performance of the intersection above, it can be seen that all nodes/intersections on the road network around the Tanah Aji Intersection experienced a significant increase in performance, namely at nodes/intersections that had LOS D and E performance changed to LOS A and B performance. In addition to having an impact on intersections, Road widening also makes roads have increased capacity which can improve road performance. The following is the impact of implementing scenario 2 on roads (Table 8).

It can be seen on the Majapahit road segment which originally had a section speed of 37.15 km/h increased to 45.40 km/hour and the Sriwijaya road segment from a segment speed of 35.48 km/hour increased to 43.45 km/h.

5 Traffic Conditions with Do-Something III Scenario

At the Tanah Aji intersection, we tried to apply the do-something scenario III by increasing the capacity of the Majapahit and Sriwijaya roads to 6/2D and Gajah Mada roads to 4/2D. Here's a geometric image of Tanah Aji Intersection with Do-Something III (Fig. 6).

The widening of the intersection approach arm can also be done to reduce queues and delays at the opening/u-turn points around the intersection, so that traffic flow becomes smoother both at the intersection and at the intersection approach arm. The performance of the intersection with the Do-Something III scenario can be seen in the Table 9.

From the performance of the intersection above, it can be seen that all nodes/intersections on the road network around the Tanah Aji Intersection experienced a significant increase in performance, namely at nodes/intersections that had LOS D and E performance changed to LOS A and B performance.

In addition to having an impact on intersections, road widening also makes roads have increased capacity which can improve road performance. The following is the impact of implementing scenario III on roads (Table 10).

It can be seen on the Majapahit road segment which originally had a segment speed of 37.15 km/h increased to 45.40 km/h and the Sriwijaya road segment from 35.48 km/h increased to 43.45 km/h, and Gajah Mada road.

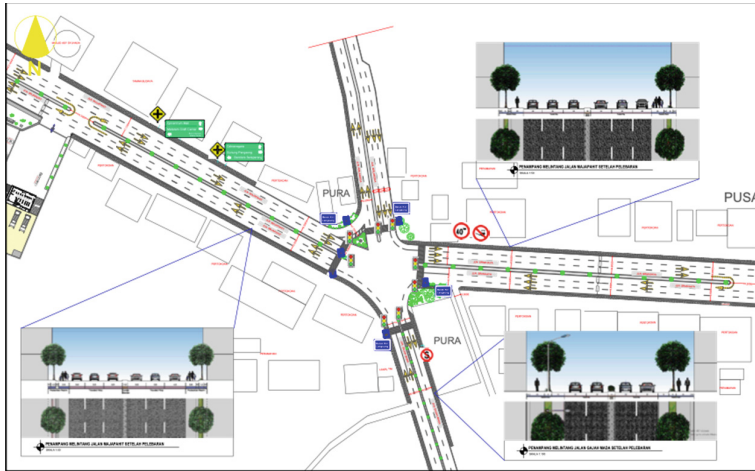


Fig. 6. Tanah Aji intersection with Do-Something III

Table 9. Intersection Performance with Do-Something III Scenario

Name	Morning peak	Afternoon peak
	DS III	DS III
Tanah Aji	Junction delay	
	8,42	9,78
	LOS	
	A	B
	Queue	
	18,24	6,82

Table 10. Performance of Each Road with Do-Something III Scenario

No	Name	Type	Volume (pcu/hour)	Capacity (pcu/hour)	VCR	Los	Speed (km/h)	Density (pcu/km)
1	Majapahit	6/2 D	3457	8482.32	0.41	B	45.40	62.17
2	Airlangga	4/2 D	2483	4906.44	0.51	C	42.66	58.21
3	Sriwijaya	6/2 D	3602	7876.44	0.46	C	43.45	67.68
4	Gajah Mada	4/2 D	1851	5464,80	0,34	B	52,46	35,28

6 Comparison of Simulation Results

Based on the results of research and simulations, it was found that the performance of the Tanah Aji intersection significantly increased network performance if the approach arm was widened. The existing condition of the Tanah Aji intersection based on the results of the analysis has a delay of 14.86 in the morning and 3.44 in the afternoon. If traffic light (do-something I) is paired with various cycle time settings, there is a decrease in intersection performance due to high delays, namely 38.32 in the morning and 41.17 in the afternoon. The implementation of do-something II has an impact on a significant increase in performance, namely at nodes/intersections that have LOS D and E performance changed to LOS A and B performance. The Majapahit road section which originally had a segment speed of 37.15 km/h increased to 45.40 km/h and the Sriwijaya road segment from the speed of the section of 35.48 km/h increased to 43.45 km/h. Simulation results with the do-something scenario III on the Majapahit road segment which originally had a segment speed of 37.15 km/h increased to 45.40 km/h and the Sriwijaya road segment from a segment speed of 35.48 km/h increased to 43.45 km/h, and Gajah Mada road segment from 32.43 km/h increased to 52.46 km/h. Based on the overall results of the simulation, the short-term handling of the Tanah Aji intersection is the installation of traffic light while in the long term it can be applied to do-something III because it can improve road performance.

7 Conclusion

Based on the results of research and simulations, it was found that the performance of the existing arm at the Tanah Aji intersection should be improved, especially on the Gajah Mada road. Based on the overall simulation results, the short term handling of the Tanah Aji intersection is to reinstall the traffic light with three phases, while in the long term it can be applied to do something III or increase the capacity of Majapahit and Sriwijaya roads to 6/2D and Gajah Mada roads to 4/ 2D because it can significantly improve road performance.

Bibliography

Gunawan, H. & Budi, G.S.: Kajian Emisi Kendaraan di Persimpangan Surabaya Tengah dan Timur serta Potensi Pengaruh terhadap Kesehatan Lingkungan Setempat. *Jurnal Wilayah dan Lingkungan*, Vol. 5.2, pp. 113-124 (2017).

Open Access This chapter is licensed under the terms of the Creative Commons Attribution-NonCommercial 4.0 International License (<http://creativecommons.org/licenses/by-nc/4.0/>), which permits any noncommercial use, sharing, adaptation, distribution and reproduction in any medium or format, as long as you give appropriate credit to the original author(s) and the source, provide a link to the Creative Commons license and indicate if changes were made.

The images or other third party material in this chapter are included in the chapter's Creative Commons license, unless indicated otherwise in a credit line to the material. If material is not included in the chapter's Creative Commons license and your intended use is not permitted by statutory regulation or exceeds the permitted use, you will need to obtain permission directly from the copyright holder.

